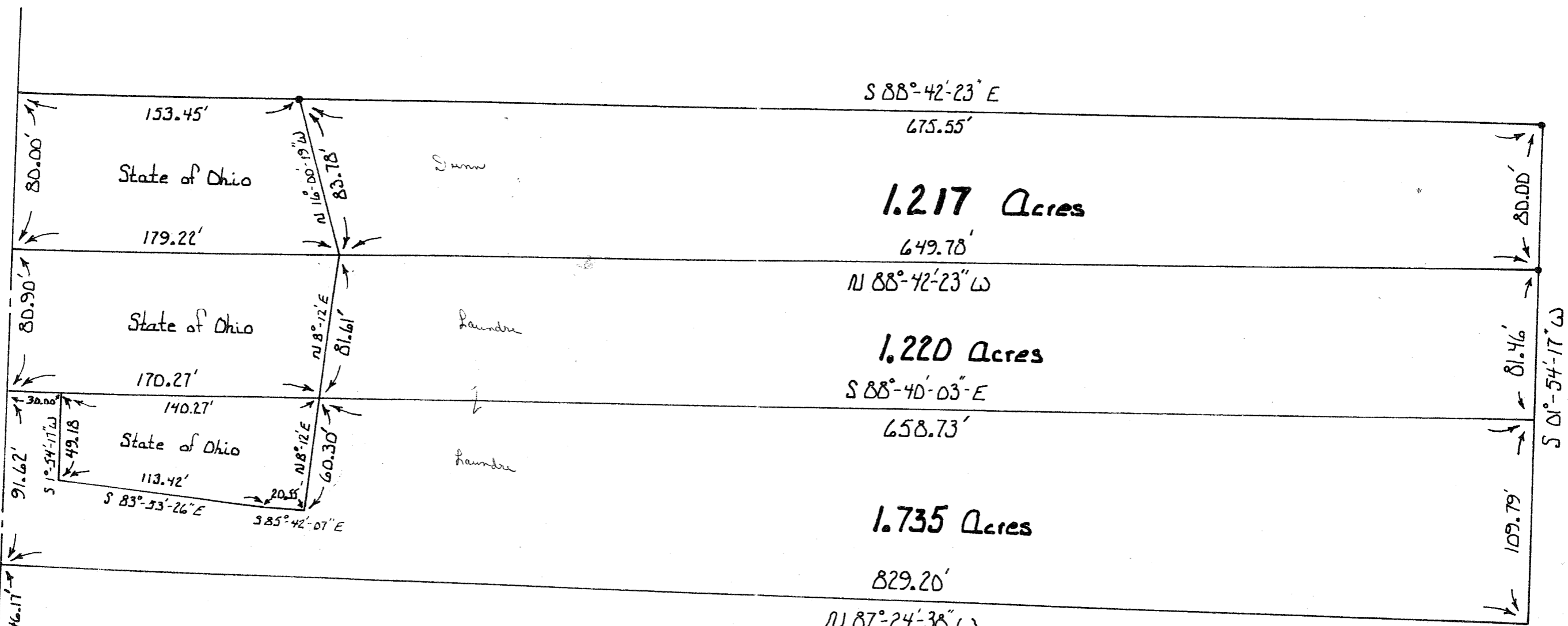


E McElroy Road & West Line N.E. 1/4 Sec. 13



N 01°-54'-17" E  
228.11'

U.S. 30

South Line N.E. 1/4 Sec. 13

Situated in the N.E. 1/4 of Section number 13, Madison Township, T-21, Range 18, County of Richland, Ohio.

SCALE: 1" = 60'	APPROVED BY: Gerald W. Riedel Reg. Surveyor #5817	DRAWN BY
DATE: May 1971		REVISED
Plat for transfer from Craig Dunn Property and Trent Landure to G.M.S. Earthmoving Inc.		
• Iron Pin		DRAWING NUMBER