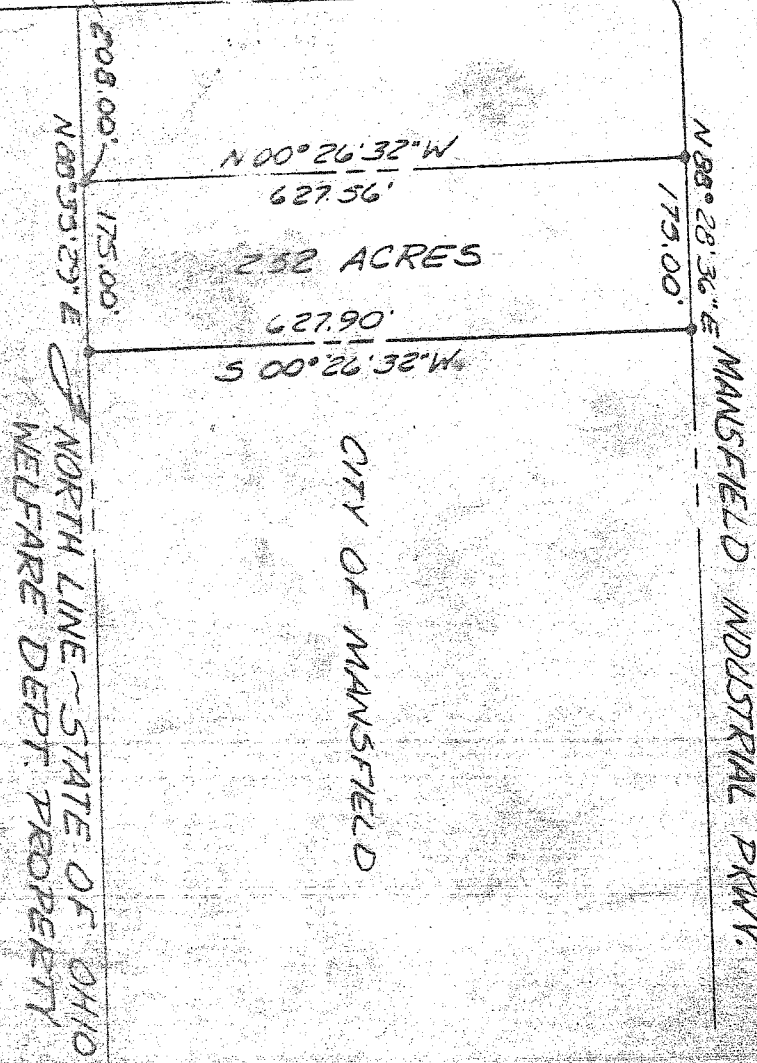


WEST LINE SW QTR. SEC. 3, T-21, R-18 (E HARRINGTON MEMORIAL RD.)
500° 26' 32" E
1953.86'



N 00° 26' 32" W

627.56'

2.52 ACRES

627.90'

S 00° 26' 32" W

208.00'
N 80° 55' 29" E

NORTH LINE - STATE OF OHIO
WELFARE DEPT. PROPERTY

179.00'
N 88° 28' 36" E

MANSFIELD INDUSTRIAL PKWY.

MIDWEST DEVELOPMENT

CITY OF MANSFIELD

CITY OF MANSFIELD

A & L. NIKOLAUS

NORTH LINE SW QTR

2.52 ACRES FROM THE CITY OF MANSFIELD TO
ALLIED SUPPLY COMPANY, INC. LOCATED IN
THE SOUTHWEST QUARTER OF SECTION 3,
TOWNSHIP 21, RANGE 18, RICHLAND COUNTY, OHIO

