

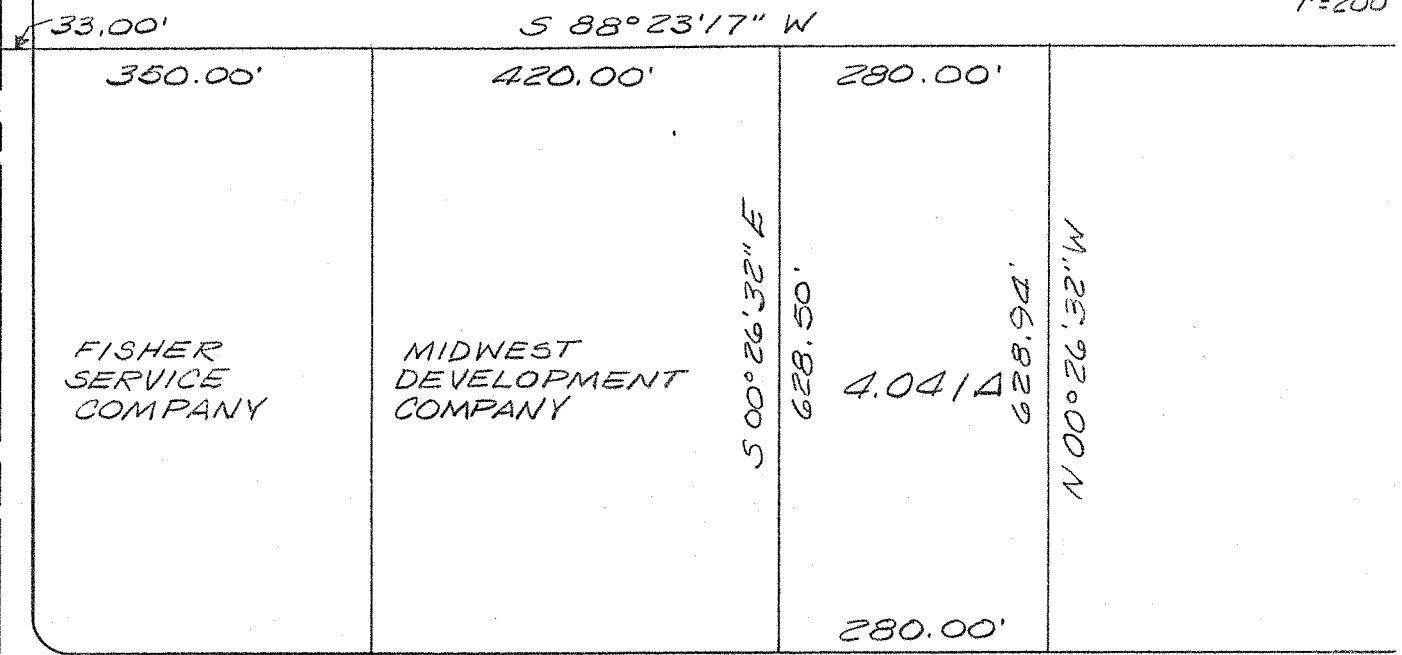
NORTH LINE SW 1/4 SEC. 3 T-21, R-18

N

1"=200'

A. & L. NIKOLAUS

WEST LINE SW 1/4 SEC. 3, T-21, R-18 (HARRINGTON MEMORIAL RD.)
500° 26' 32" E
649.06'



N 88° 28' 36" E

MANSFIELD INDUSTRIAL PARKWAY 80' R/W

4.041 AC. FROM CITY OF MANSFIELD TO MANSFIELD GROWTH CORPORATION

SW QTR. SEC. 3, TWP. 21, R-18
MANSFIELD, RICHLAND COUNTY, OHIO

City Eng.