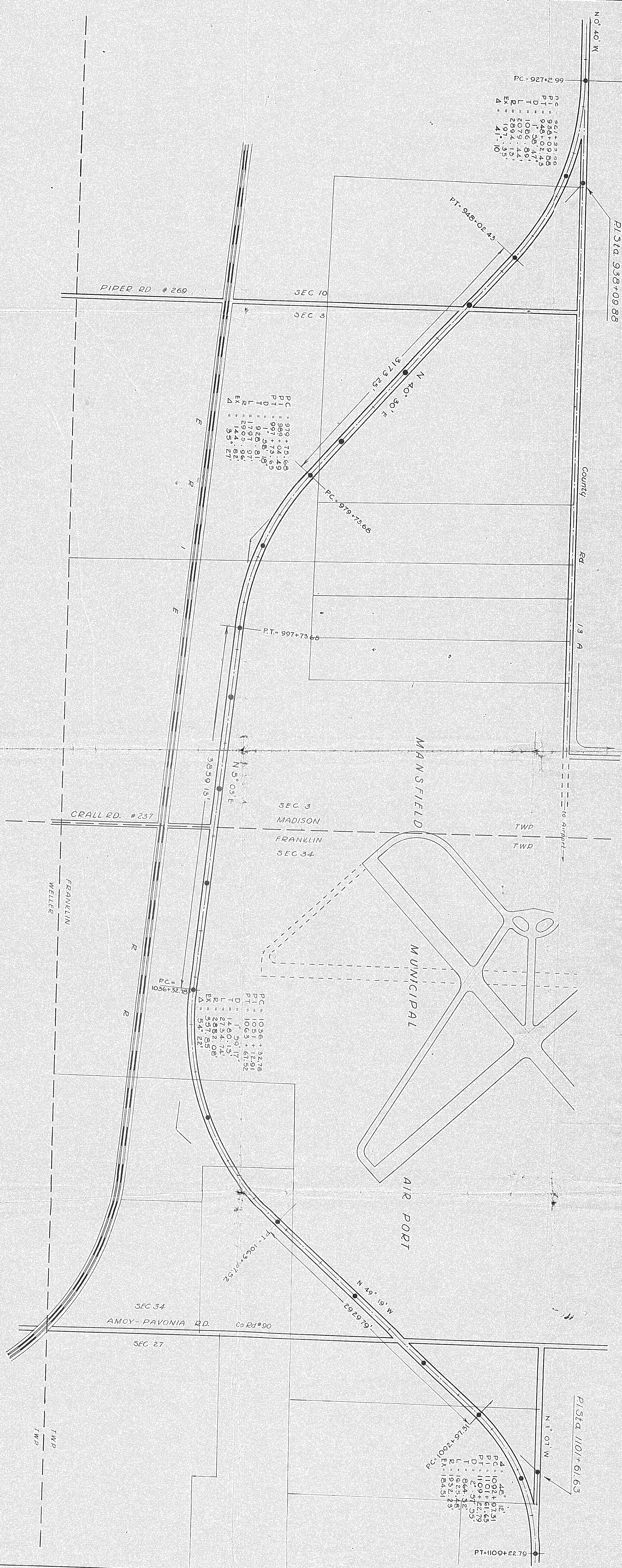


PLAT OF LOCATION & ESTABLISHMENT OF COUNTY ROAD NO 13 KNOWN AS THE MANSFIELD-NORWALK ROAD SHOWING LOCATION OF CENTER-LINE REFERENCE MONUMENTS

SCALE 1" = 500'
IRON PIN MONUMENTS SHOWN THUS —●—



ESTABLISHMENT PROCEEDINGS
Commissioners' View
Public Hearing
Established
Total Length - 18,199.80 Feet or 3.447 Miles

THIS IS TO CERTIFY THAT THE PLAT HEREON DELINEATED IS A TRUE AND CORRECT RETURN OF A SURVEY MADE BY ME, IN PURSUANCE OF SECTION 6865 OF THE GENERAL CODE OF OHIO, FOR THE ESTABLISHMENT OF COUNTY ROAD NO 13A, OTHERWISE KNOWN AS THE MANSFIELD-NORWALK ROAD AND THAT THE CENTER LINE OF SAID ROAD IS MONUMENTED WITH IRON PINS AT THE LOCATIONS INDICATED THEREON.
DATE Feb. 19th 1948

Walter Reed
RICHLAND COUNTY ENGINEER

Filed for Record
Recorded
Vol. Page
Richland County Record of Plats
at
Richland Co. Recorder

FILE NO.	STATE	PROJECT	FISCAL YEAR
2	OHIO		