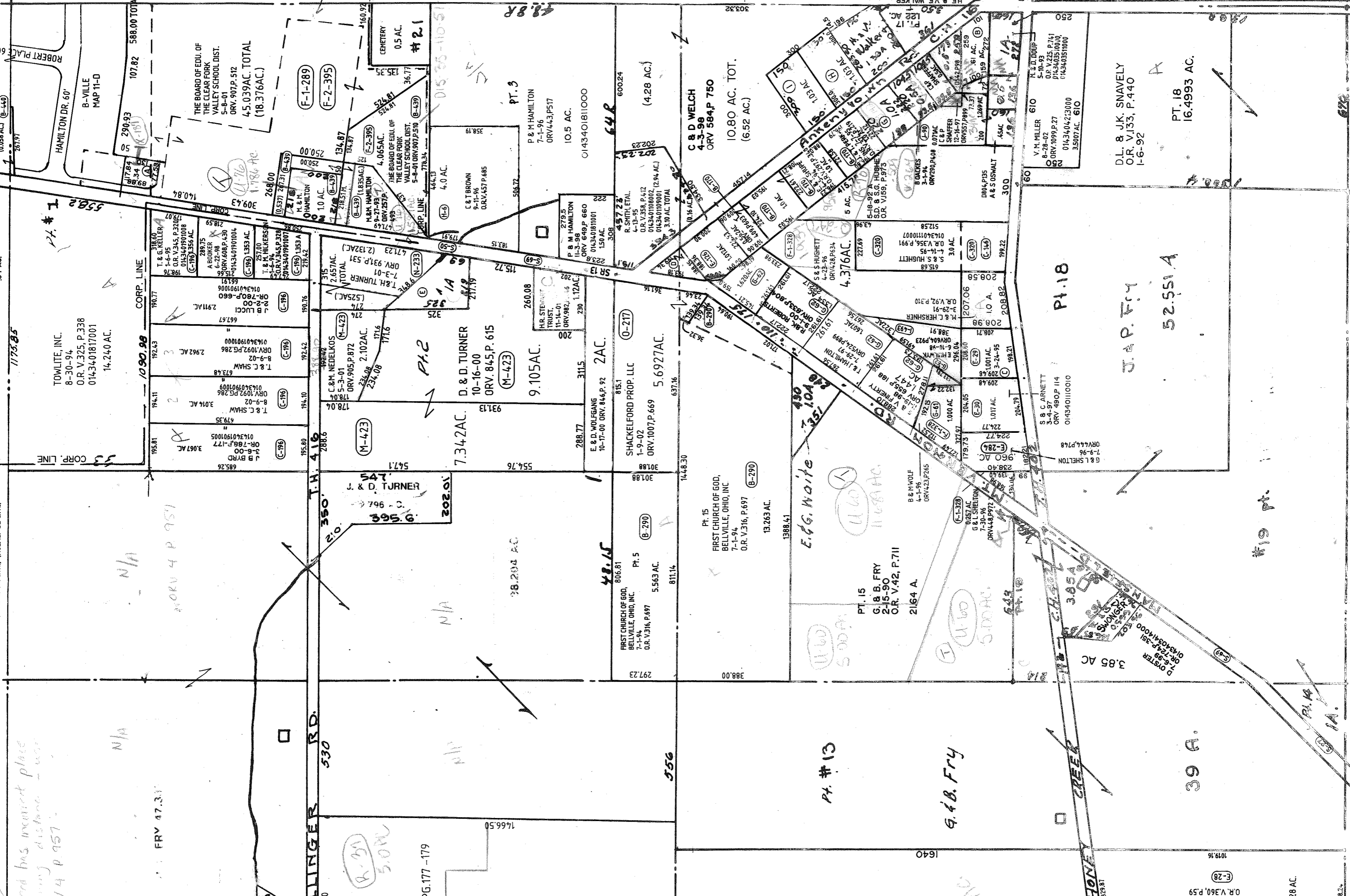


34%AL TOTAL
(382AC=NE QTR.) (162AC=SE QTR.)

DV. 690, P. 147
1173.85

ORV 520 P. 259
3.4 AC.
(0.85 AC.) (B-440)
261.91



K. & S. SANSON
9-4-01
ORV. 954, P. 674
1AC.

E.M. MULWYK
12-8-95
ORV. 403 B, 673

C & D STEMPLE
ORV. 650, P. 132

JEFFERSON TWP.

622

328.2