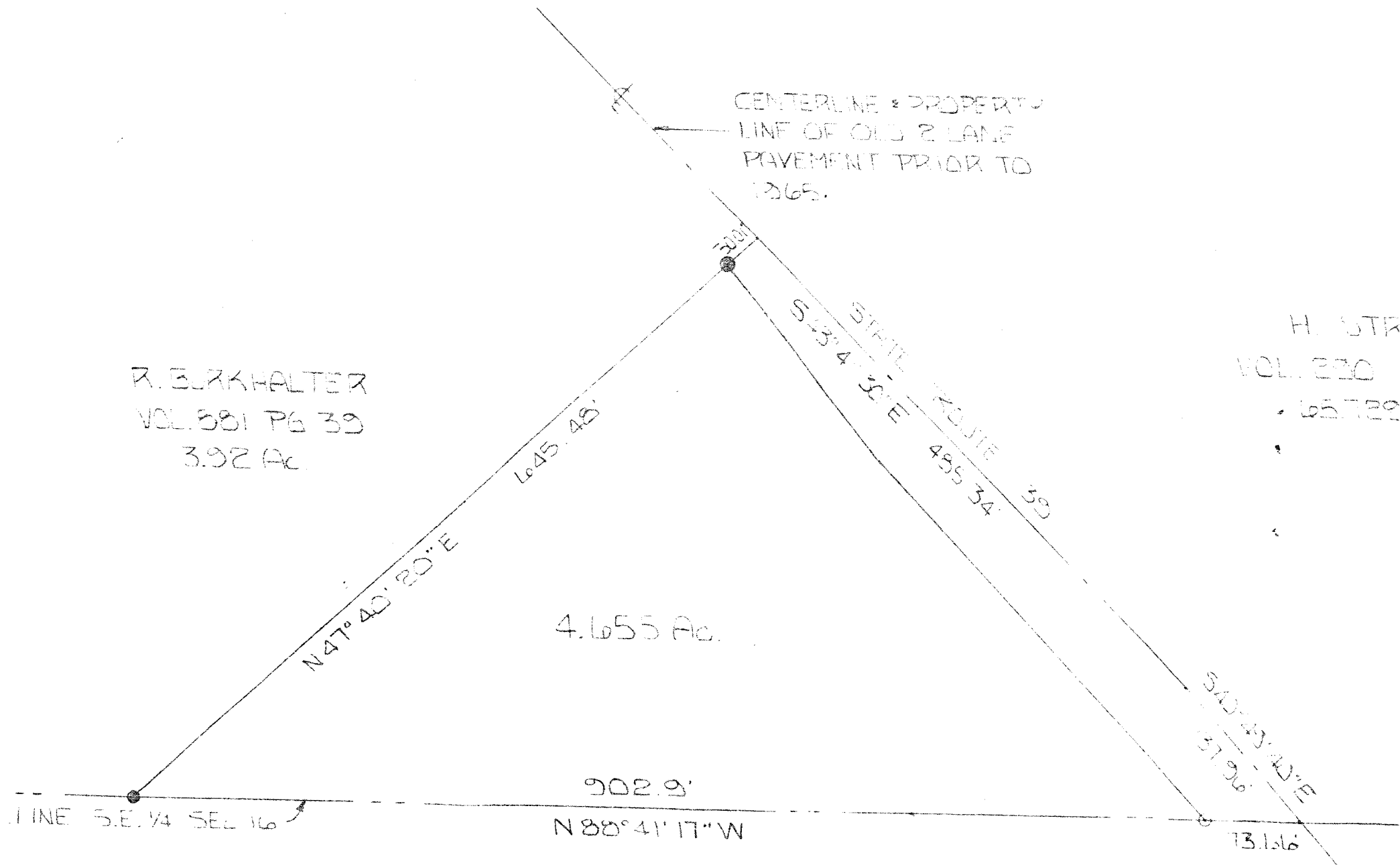


R. BLANKHALTER
VOL. 581 PG 39
3.92 Ac.

4.655 Ac.

CENTERLINE & PROPERTY
LINE OF OLD 2 LANE
PAVEMENT PRIOR TO
1965.

H. STR
VOL. 230
65.722



902.9'

N 88° 41' 17" W

300'

N 47° 40' 20" E

645.48'

STATE ROUTE 39
S 42° 43' 40" E
485.34'

S 42° 43' 40" E
137.96'

73.156

LINE S.E. 1/4 SEC 16