

SURVEY
No. 5082

DUANE BISSEL
P. S.E. 1/4, Sec. 4, T-22, R-18
FRANKLIN TWP., RICHLAND CO., OHIO

DESCRIPTION

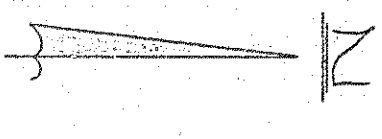
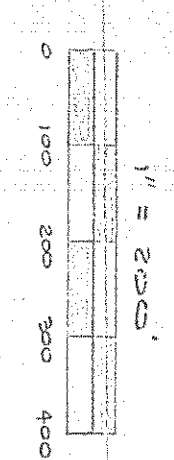
Situated in the State of Ohio, County of Richland, Township of Franklin and being a part of the Southeast Quarter of Section 4, T-22, R 18 and more particularly described as follows:

Beginning at a "P.K." nail found at the Southwest corner of said Southeast Quarter and the Centerline of S. R. 96; Thence S 87°43'07" E along the South line of said Quarter Section and the Centerline of S. R. 96, a distance of 609.92 feet to a "P.K." nail set and the true point of beginning; Thence S 87°43'07" E, continuing along the said South line of Section 4, a distance of 1692.94 feet to an iron pin set; Thence N 47°14'24" E, passing thru an iron pin set at 1275.00 feet, a total distance of 1325.00 feet to the Center of the Blackfork or the Mohican;

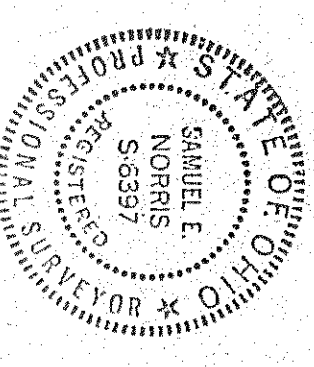
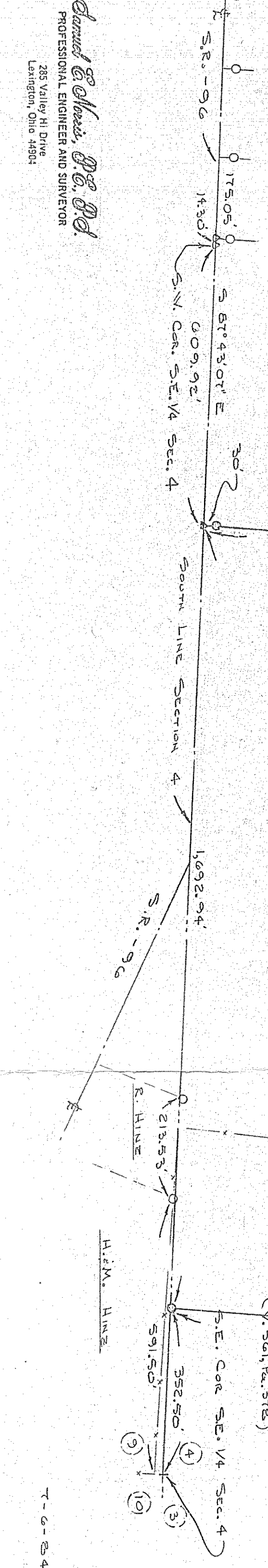
Thence N 72°39'13" W following upstream on the Center, a distance of 54.71 feet;
 Thence S 52°04'26" W following upstream on the Center, a distance of 83.13 feet;
 Thence S 62°35'01" W following upstream on the Center, a distance of 131.74 feet;
 Thence N 53°13'37" W following upstream on the Center, a distance of 113.11 feet;
 Thence N 50°50'12" W following upstream on the Center, a distance of 23.95 feet;
 Thence N 74°08'54" W following upstream on the Center, a distance of 126.55 feet;
 Thence N 77°19'12" W following upstream on the Center, a distance of 97.32 feet;
 Thence N 51°53'14" W following upstream on the Center, a distance of 103.70 feet;
 Thence N 29°19'32" W following upstream on the Center, a distance of 109.77 feet;
 Thence N 15°51'24" W following upstream on the Center, a distance of 265.77 feet;
 Thence N 33°17'39" W following upstream on the Center, a distance of 107.07 feet;
 Thence N 52°17'51" W following upstream on the Center, a distance of 196.42 feet;
 Thence N 62°56'12" W following upstream on the Center, a distance of 251.08 feet;
 Thence N 67°03'42" W following upstream on the Center, a distance of 103.02 feet;
 Thence N 51°40'00" W following upstream on the Center, a distance of 259.30 feet;
 Thence N 20°33'54" W following upstream on the Center, a distance of 96.32 feet;
 Thence N 20°34'22" E following upstream on the Center, a distance of 70.88 feet;
 Thence N 9°33'19" E following upstream on the Center, a distance of 70.88 feet;
 Thence N 90°00'10" W, along the North line of said Section 4, a distance of 202.73 feet to an iron pin set; Thence S 47°14'24" E, passing an iron pin set at 2617.68 feet, a total distance of 2,647.68 feet, to a "P.K." nail set on the South line of said Southeast Quarter of Section 4 and the Centerline of S. R. 96 also the true place of beginning, containing 69.999 acres of land, more or less but subject to all legal rights, easements and restrictions of record.

69.999 Ac.

- LEGEND**
- Iron Pin Set
 - ⊙ Iron Pin Set
 - △ P.K. Nail Set
 - ▲ P.K. Nail Set
 - E.W.S. Fence
 - Center Blackfork
 - Centerline
 - *** Pine Trees



L.B. TULLS
(V. 65 Pa. 1655)



Samuel E. Norris
Res. Surveyor # 6397

Samuel E. Norris, P.E., P.S.
PROFESSIONAL ENGINEER AND SURVEYOR
288 Valley Hill Drive
Lexington, Ohio 44504

T-6-84