

WARD 1

Pt. Lot 2119 S. Main St.

Being The East 150 Ft of lot 2119 at corner of S. Main St and Blanch St.

Beginning at point at the intersection of S. Main St. on the East Side and Blanch St on the South Side

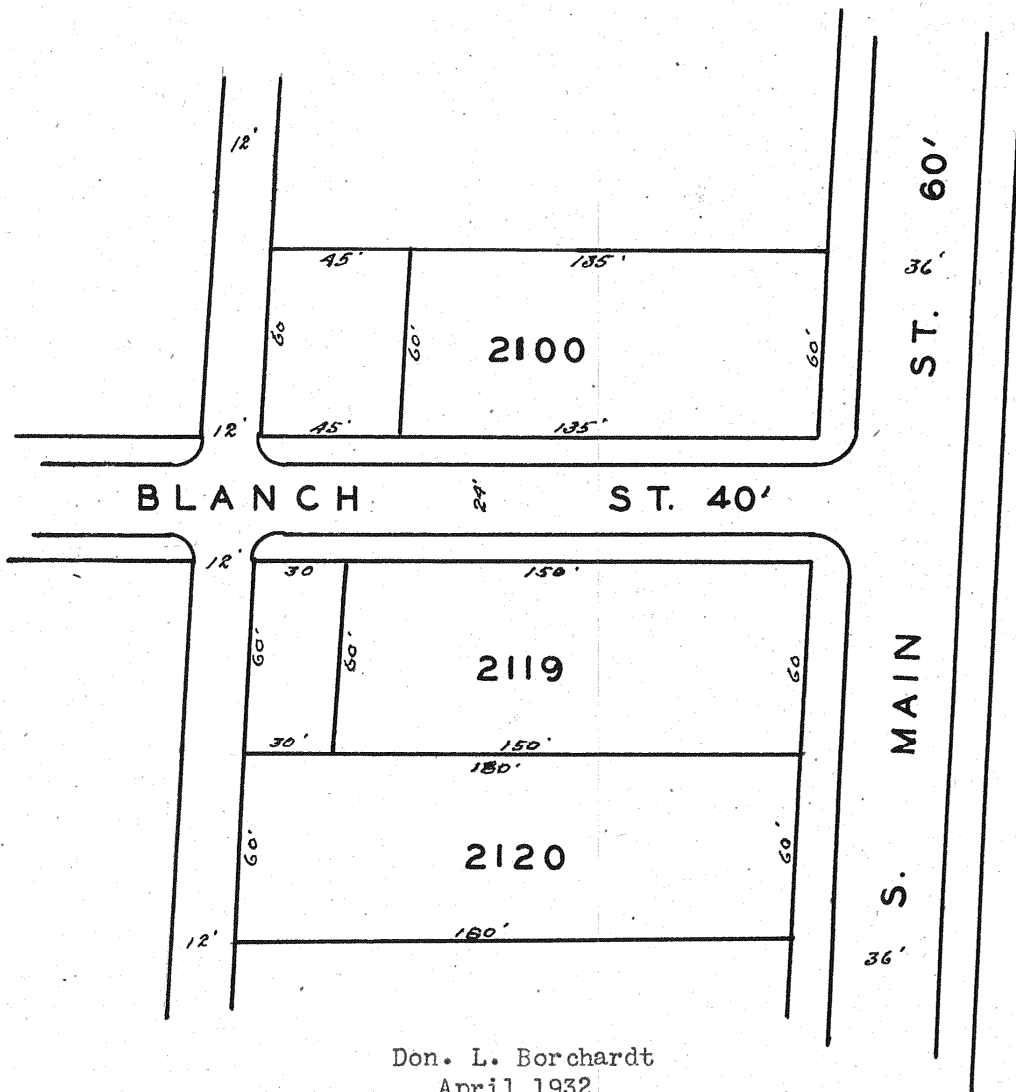
THENCE- South 60 ft. To an Iron Pin

THENCE- West parallel With Blanch St. 150 ft.

THENCE- North 60 ft to the south line of Blanch St.

THENCE- East along and with the south line of Blanch St. 150 ft. to the place of beginning  
Being known as lot 2119

Save and Except 30 ft off the rear of the above described lot



Don. L. Borchardt  
April 1932