

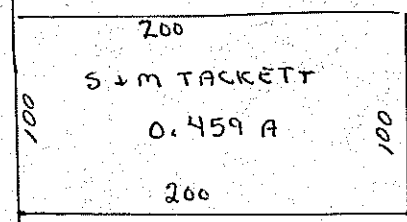
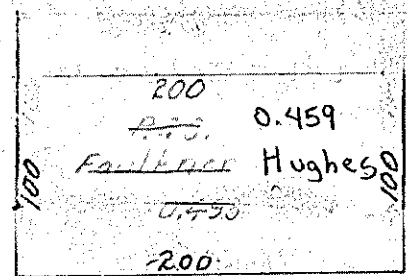
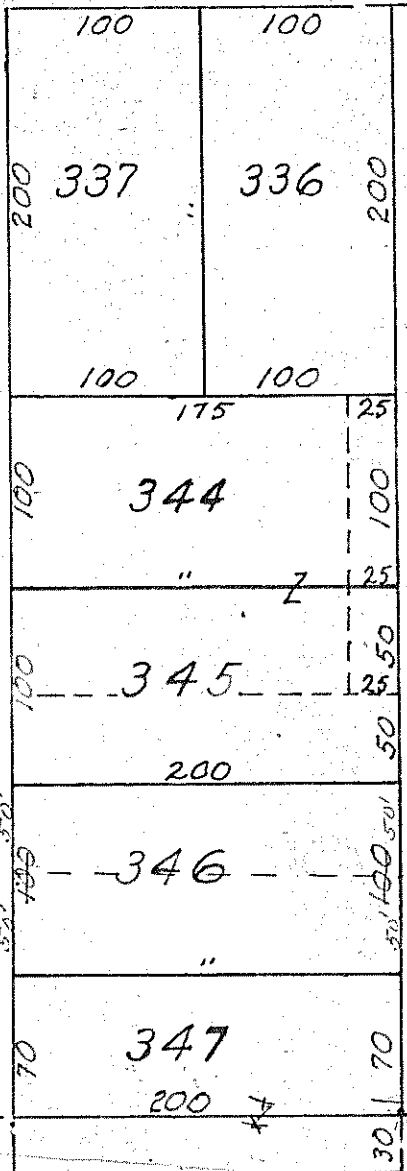
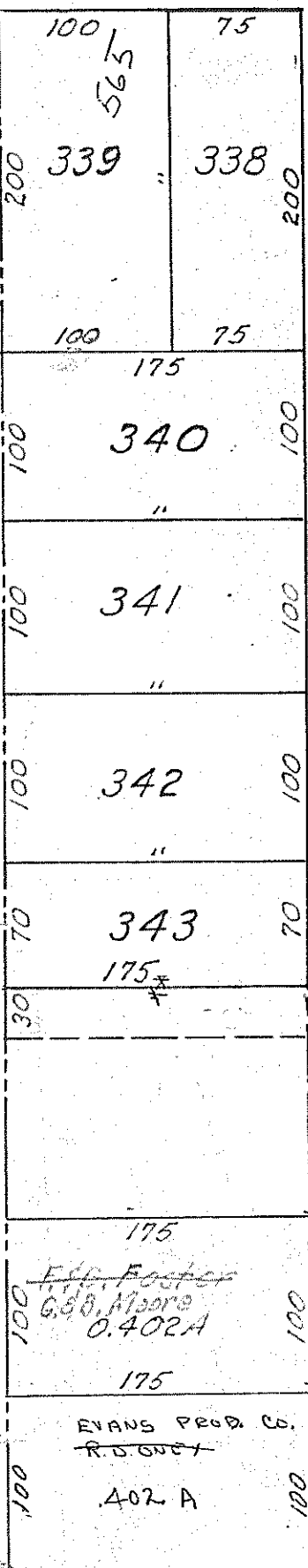
WEST BROADWAY

BASE LINE RD. 60' County Line
North Line NW gr. sect. 6

W. Line NW gr. sect. 6

CORP. LINE

BROOKS COURT 50'



SEE NEXT MAP →

OLD Corp. Line

BROOKS ALLOTMENT #1
Vol. 21, Page 53
PLYMOUTH (38A)