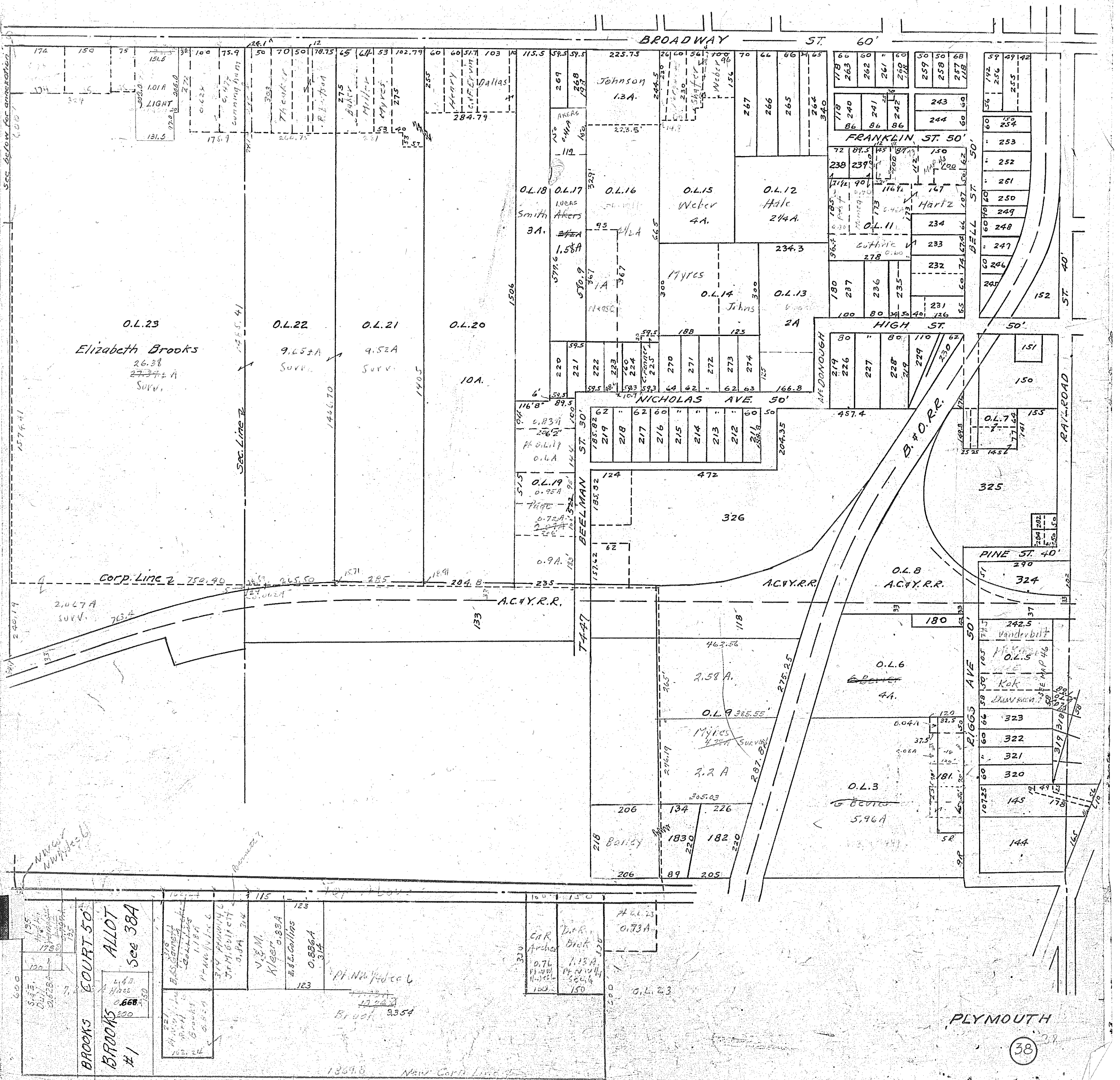


See below for annotation



O.L. 23
 Elizabeth Brooks
 26.38
 27.37 ± A
 SURV.

O.L. 22
 9.65 ± A
 SURV.

O.L. 21
 9.52 A
 SURV.

O.L. 20
 10A.

NICHOLAS AVE 50'
 219 218 217 216 215 214 213 212 211 210
 185.82 185.82 185.82 185.82 185.82 185.82 185.82 185.82 185.82 185.82

HIGH ST 50'
 219 226 227 228 229 230
 80 80 80 80 80

PINE ST 40'
 290 324 323 322 321 320
 145 144

PLYMOUTH