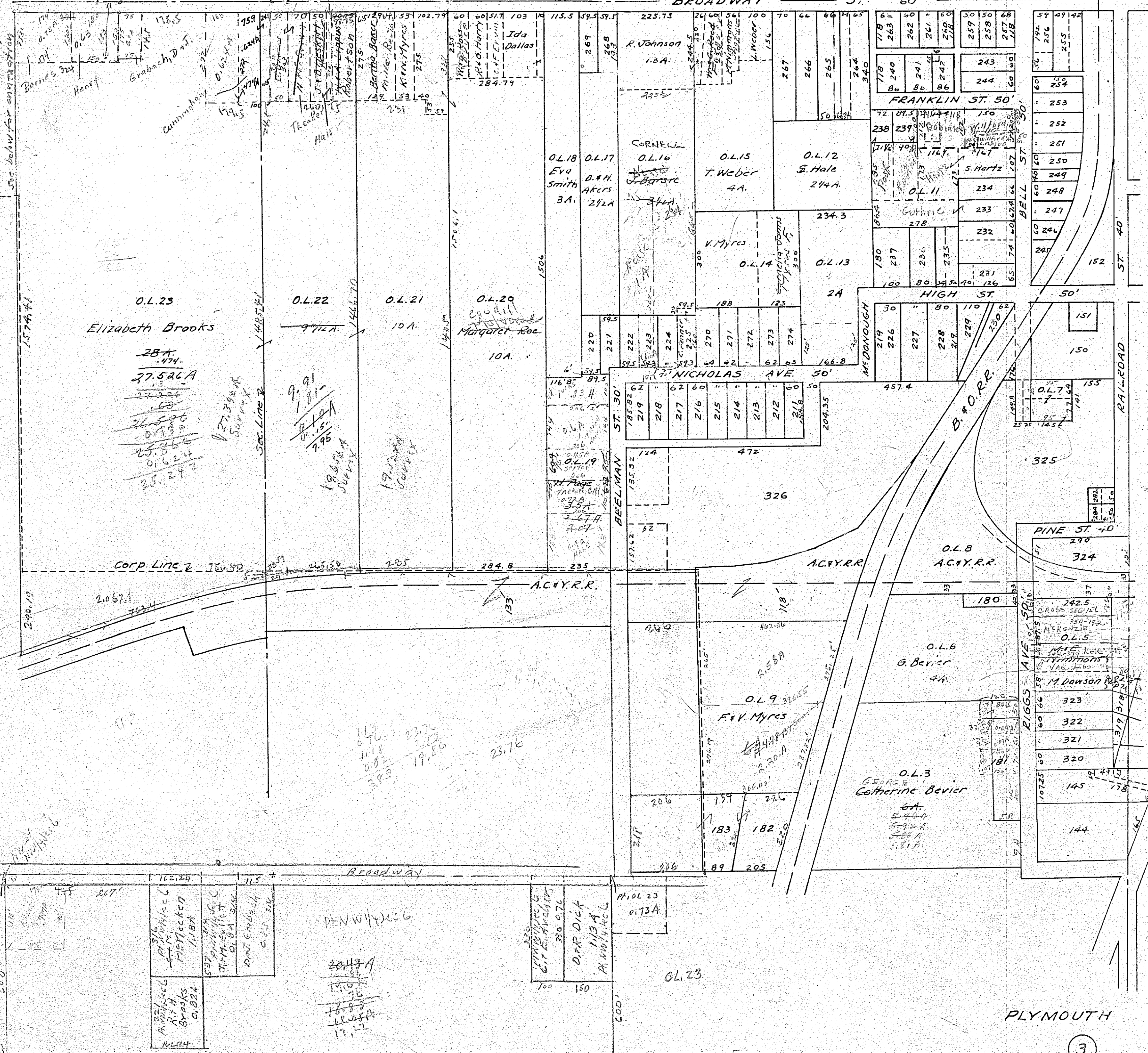


BROADWAY ST. 60'



O.L. 23
Elizabeth Brooks
28A.
474-
27.526A
27.224
26.526
0.730
25.866
0.624
25.242

O.L. 22
10A.
9.91
1.81-
0.10A
7.95
19.60A
Survey

O.L. 21
10A.
19.60A
Survey

O.L. 20
Margaret Roe
10A.
19.60A
Survey

O.L. 18
Evo Smith
3A.
O.L. 17
D.H. AKERS
2 1/2 A
O.L. 16
Cornell
O.L. 15
T. Weber
4A.
O.L. 14
V. Myers
O.L. 13
2A

O.L. 12
S. Hale
2 1/4 A.
O.L. 11
S. Hartz
234
233
232
231
230

O.L. 10
151
150
149
148
147
146
145
144

Corp. Line 2
2.067A
743.4

2.067A
743.4
2.067A
743.4

2.067A
743.4
2.067A
743.4

2.067A
743.4
2.067A
743.4

2.067A
743.4
2.067A
743.4

2.067A
743.4
2.067A
743.4

2.067A
743.4
2.067A
743.4

2.067A
743.4
2.067A
743.4

2.067A
743.4
2.067A
743.4

2.067A
743.4
2.067A
743.4

2.067A
743.4
2.067A
743.4

2.067A
743.4
2.067A
743.4

2.067A
743.4
2.067A
743.4

2.067A
743.4
2.067A
743.4

2.067A
743.4
2.067A
743.4

2.067A
743.4
2.067A
743.4

2.067A
743.4
2.067A
743.4

2.067A
743.4
2.067A
743.4