

T.H. 370

T.H. 357

SCHOOL
O.L. 40

FIRST

AVE

60'

PARK ST.

BOND ST.

FORK

39

S.R.

ROCKY

UNION

MAIN

ST.

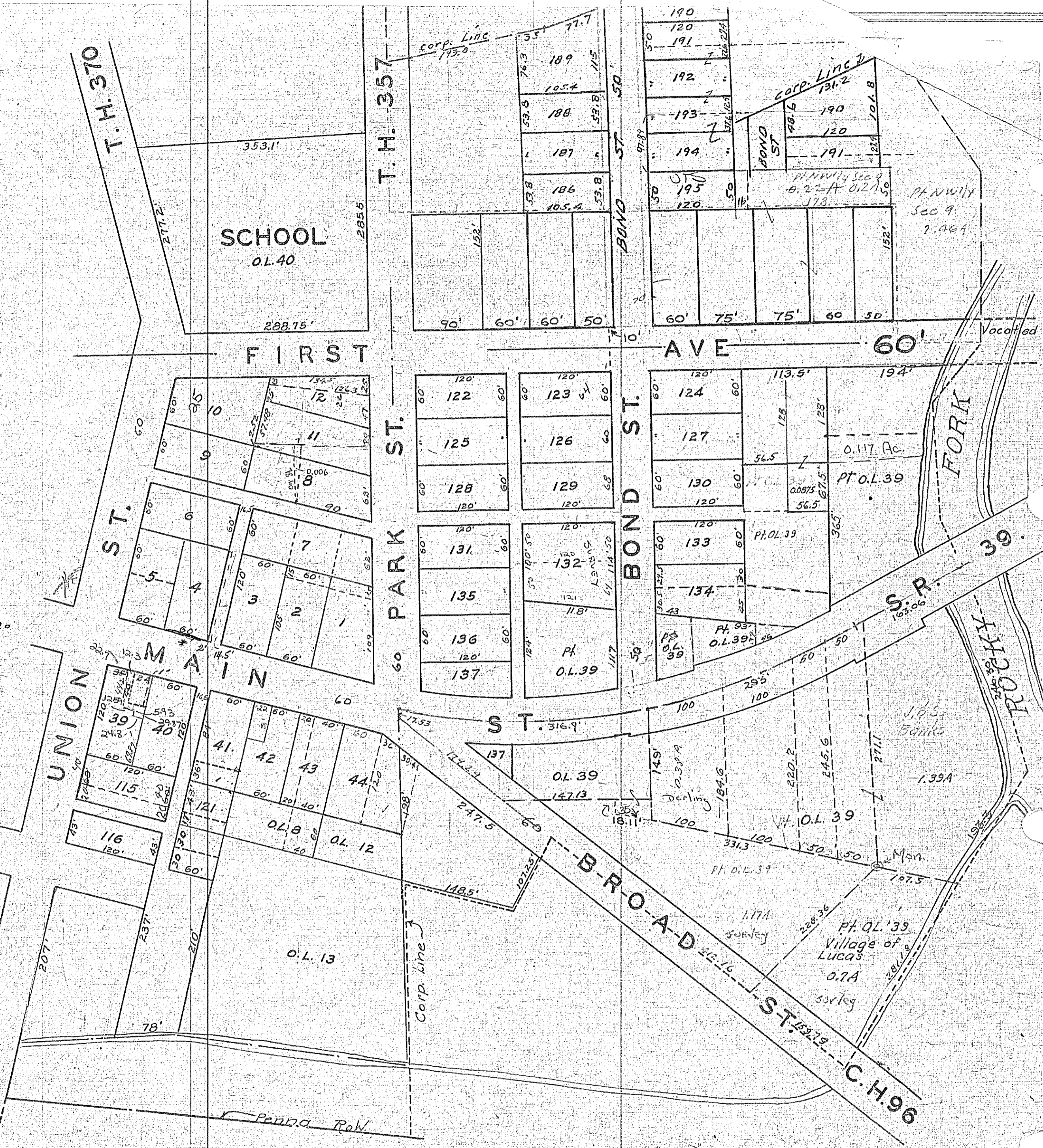
BROAD

ST.

C.H. 96

LUCAS

* ORD. No. 10-455-78
VAC. PT. OF ALLEY 2X120



PL. NW 1/4 Sec 9
0.22 A 0.12 A
PL. NW 1/4
Sec 9
2.46 A

0.17 Ac.
PT. O.L. 39

PT. O.L. 39

PT. O.L. 39

O.L. 39

PT. O.L. 39
Village of
Lucas
0.7A
survey

O.L. 13

Penna. R.R.

Vacated

165
Banks

1.39A

Man

1.17A
survey

149
D. S. P. A

18.11

331.3

PT. O.L. 39

117A

228.38

281.19

107.5

107.5

107.5

107.5

107.5

107.5

107.5

107.5

107.5

107.5

107.5

107.5

107.5

107.5

107.5