

SEE MAP #14

McIntosh Reserve
Amend. #3
Plat V-30 Pg. 1
9.218 AC DEC ORV 1523
Pg. 300
F-2-325

802.43

McIntosh Reserve
Condo
Plat Vol. 29 Pg. 90-92
Dec. ORV 1335, P. 207

McIntosh Reserve Condo
AMEN #1
RPM MANAGEMENT INC A CORP.
6-16-00
ORV 814, P. 560
DEC. 1393, P. 813
2.239 AC
Plat Vol. 29, P. 111

McIntosh Reserve Condo
AMEN #2
Plat Vol. 29, P. 121
4.505 AC
400.31
DEC. 1453, P. 301

A MORLEY
ORV 213, P. 38

2.6792 AC
0482711113000

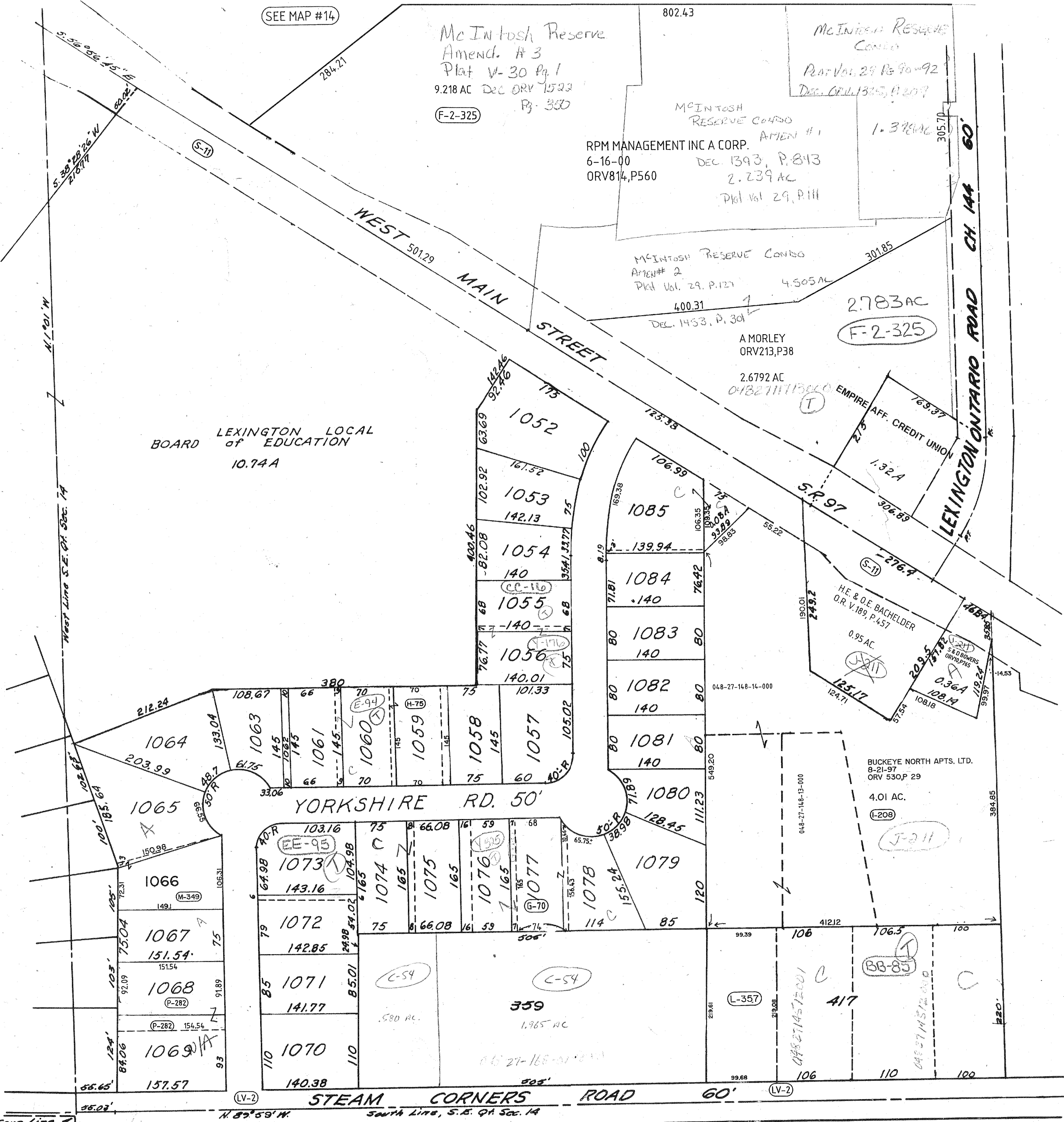
2.783 AC
F-2-325

BOARD LEXINGTON LOCAL
of EDUCATION
10.74 A

West Line S.E. Q4 Sec. 14
N. 1° 01' W
S. 38° 28' 26" W
216.977
60.02

WEST MAIN STREET

LEXINGTON ONTARIO ROAD CH. 144 60'



Lots # 1052 - 1085, Vol. 23, Page 56

LEXINGTON