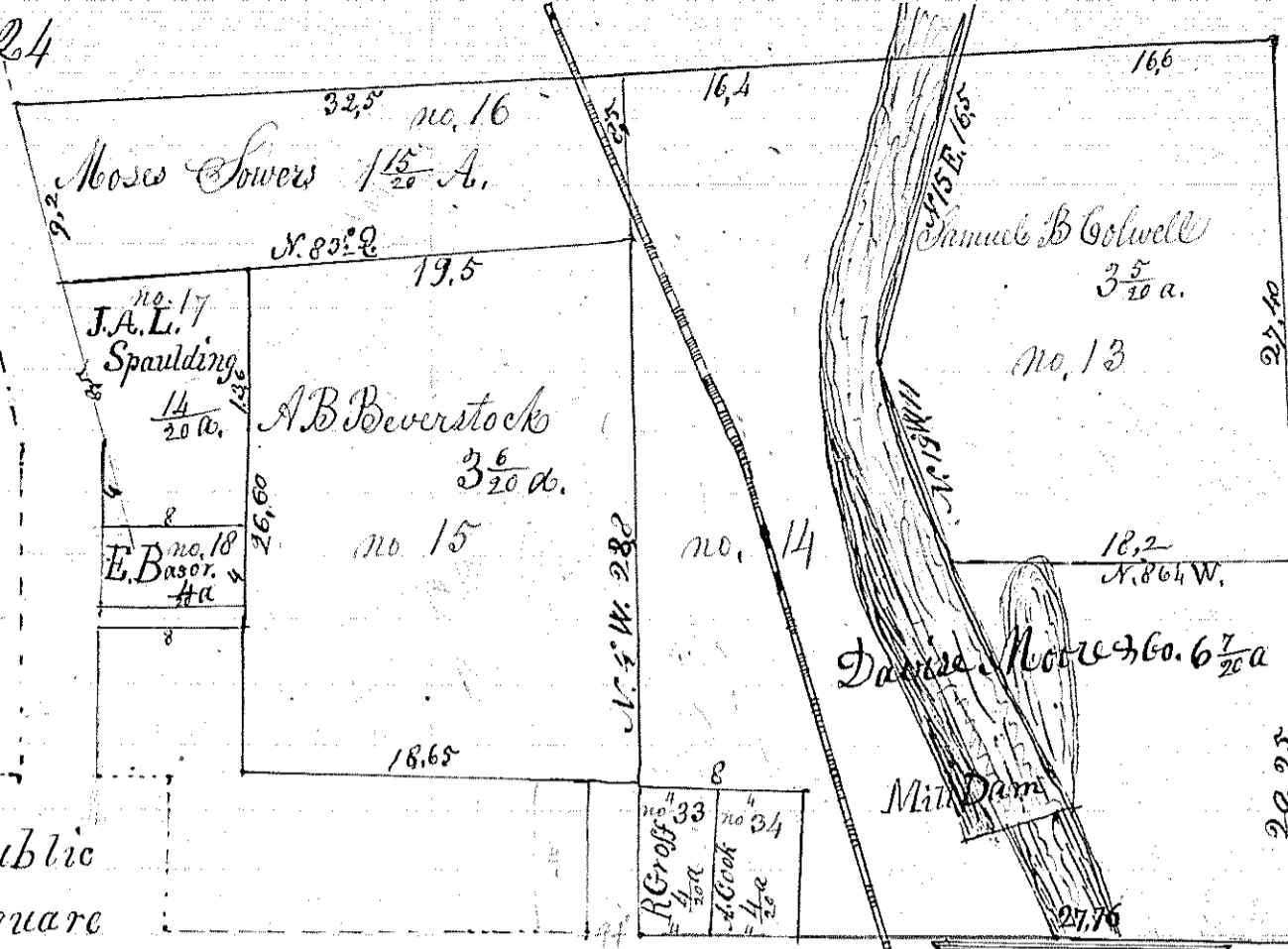
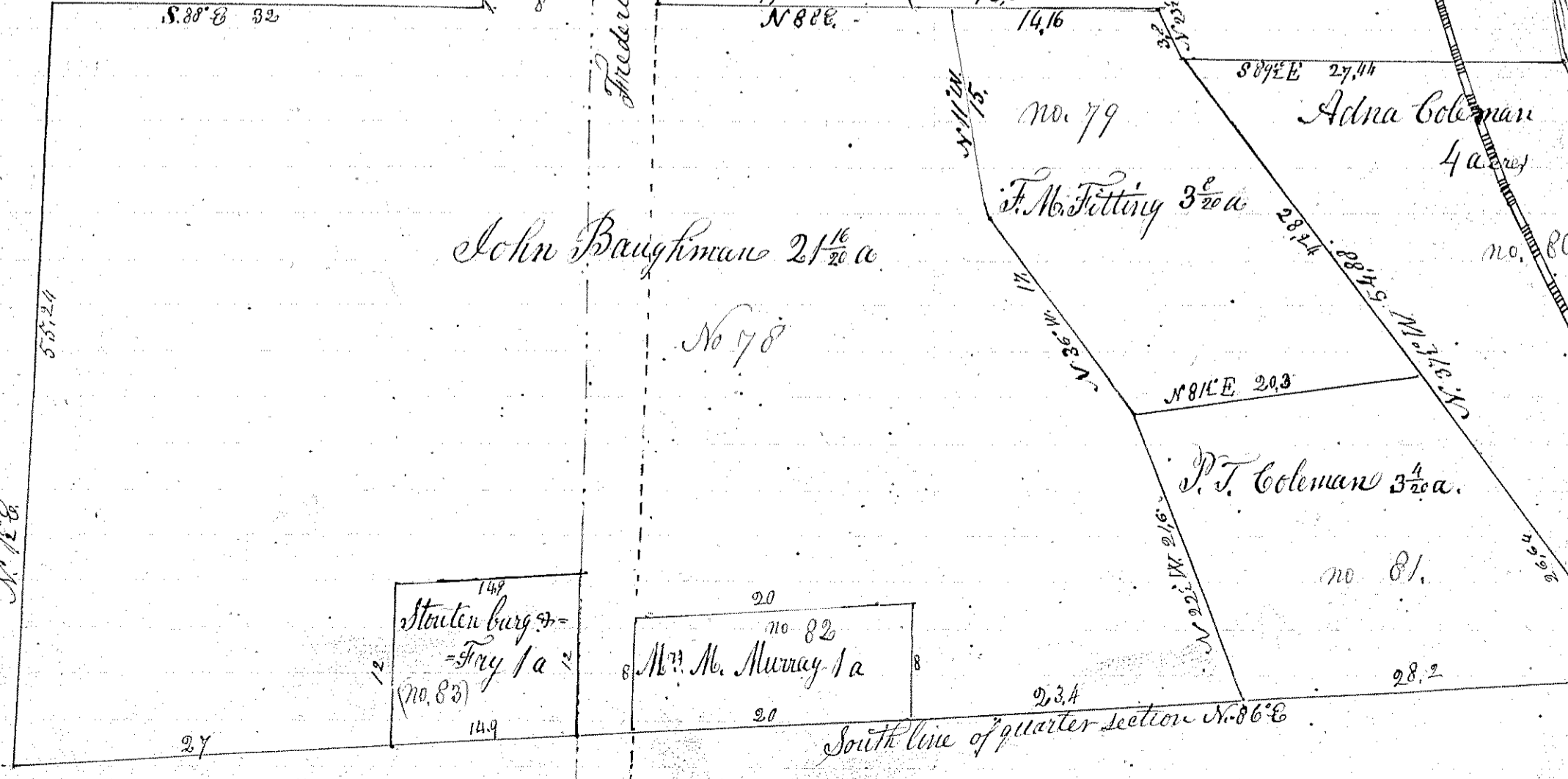
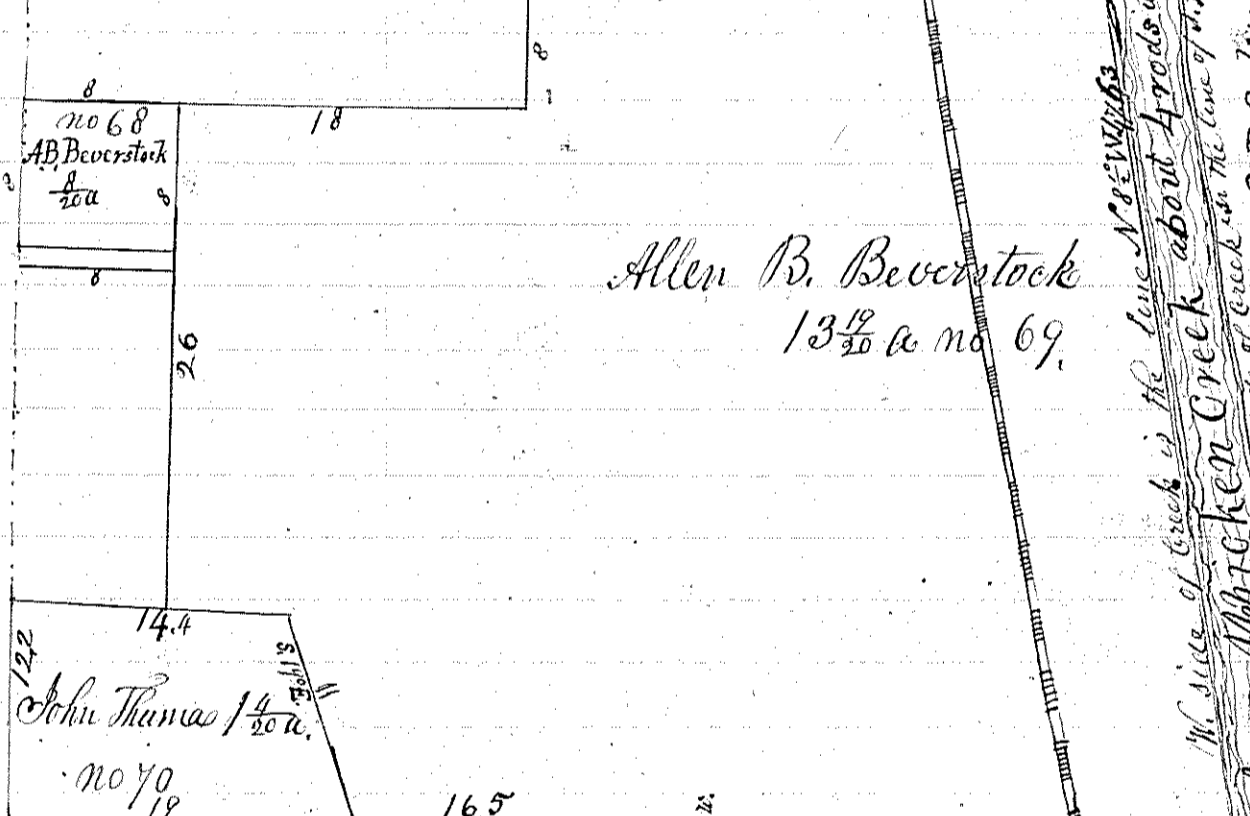
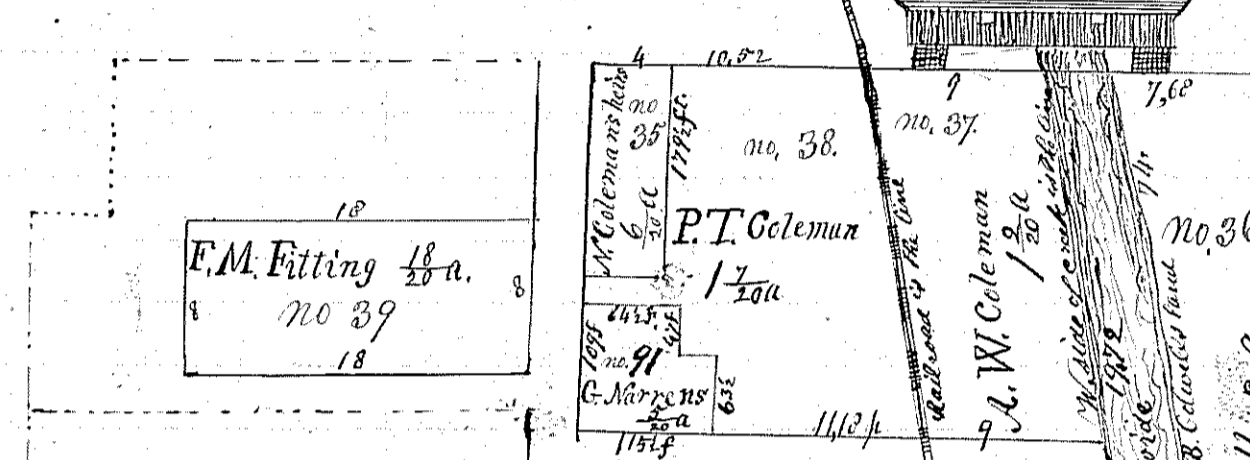


East part of N.W. quarter of section 24

N. Line of gr. N. 86° E.



Public Square



East line of quarter section

N. 2 W.

South line of quarter section N. 86° E.

N. 12° E.

Frederick Street N. 1/2 E.

W. side of creek in the line N. 86° E. about 178

W. side of creek in the line of S. B. Colwell's land

W. side of creek in the line of S. B. Colwell's land

W. side of creek in the line of S. B. Colwell's land

East Fork of Maltick Creek

S. B. Colwell & Co.