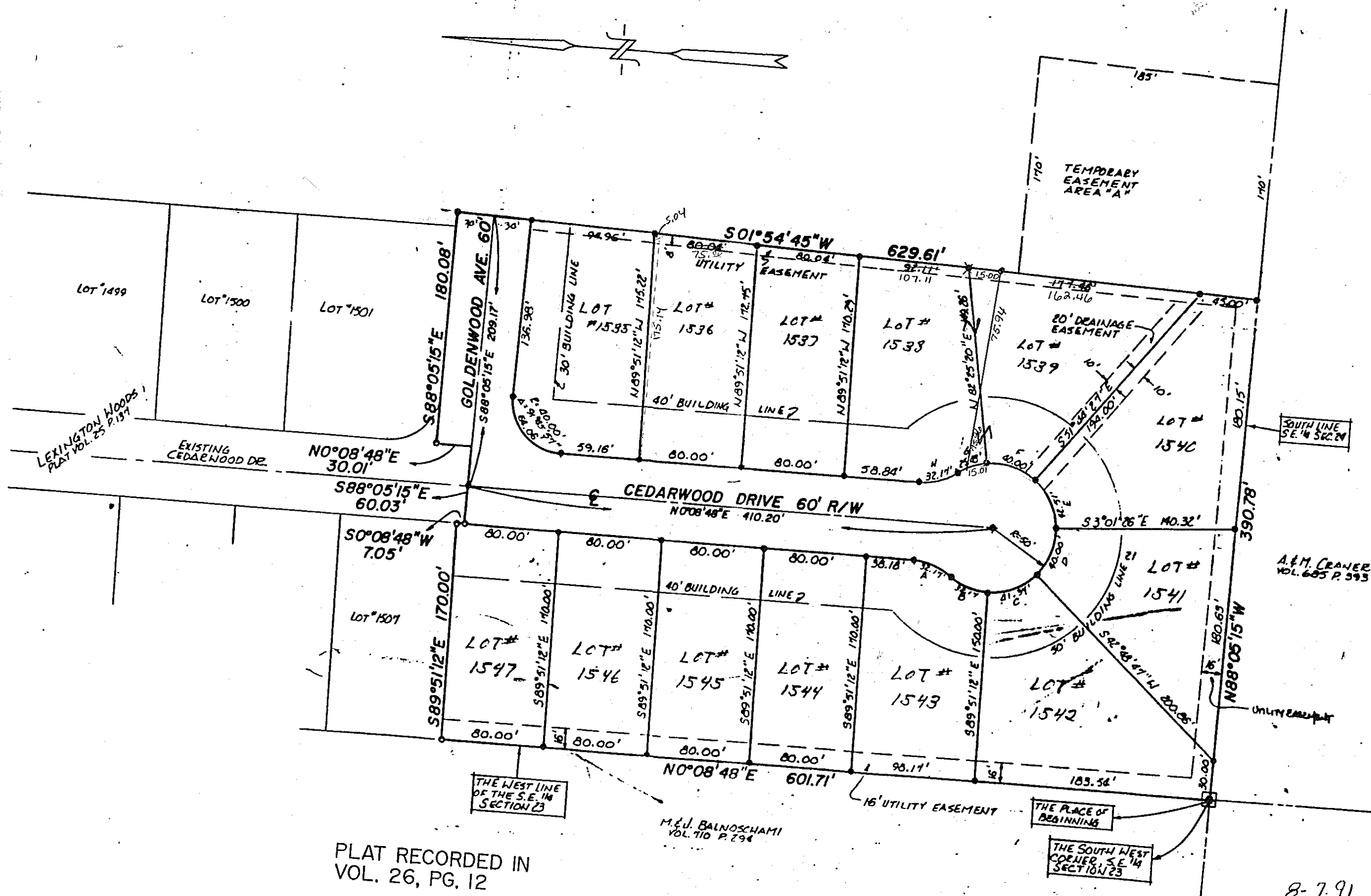


LEXINGTON WOODS N#2
PT. S.E. 1/4 SECTION 23, T-20, R-19
TROY TOWNSHIP
VILLAGE OF LEXINGTON
RICHLAND COUNTY, OHIO



PLAT RECORDED IN
VOL. 26, PG. 12

M.J. BALNOSCHAMI
VOL. 710 P. 294

THE SOUTH WEST
CORNER, S.E. 1/4
SECTION 23

8-7-91

Map 45