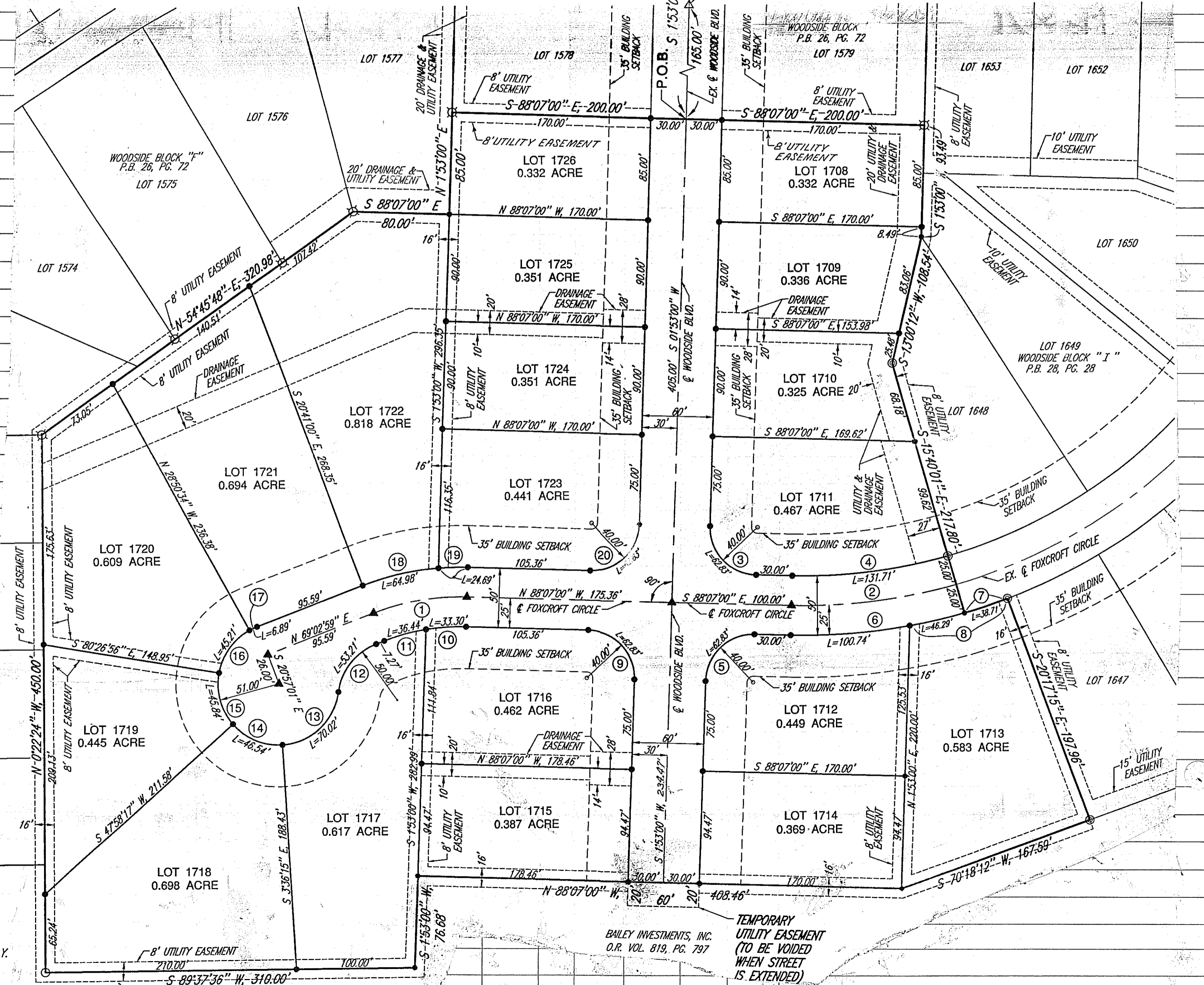
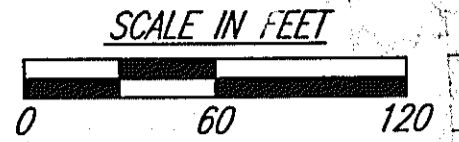


N.W. CORNER SECTION 23
WEST LINE, SEC. 23 VILLAGE LINE
NORTH LINE, N.W. 1/4, SEC. 23



HIGHLAND GARDEN HOMES
D.V. 650, PG. 678

BAILEY INVESTMENTS, INC.
O.R. VOL. 819, PG. 797
TEMPORARY UTILITY EASEMENT
(TO BE VOIDED WHEN STREET IS EXTENDED)