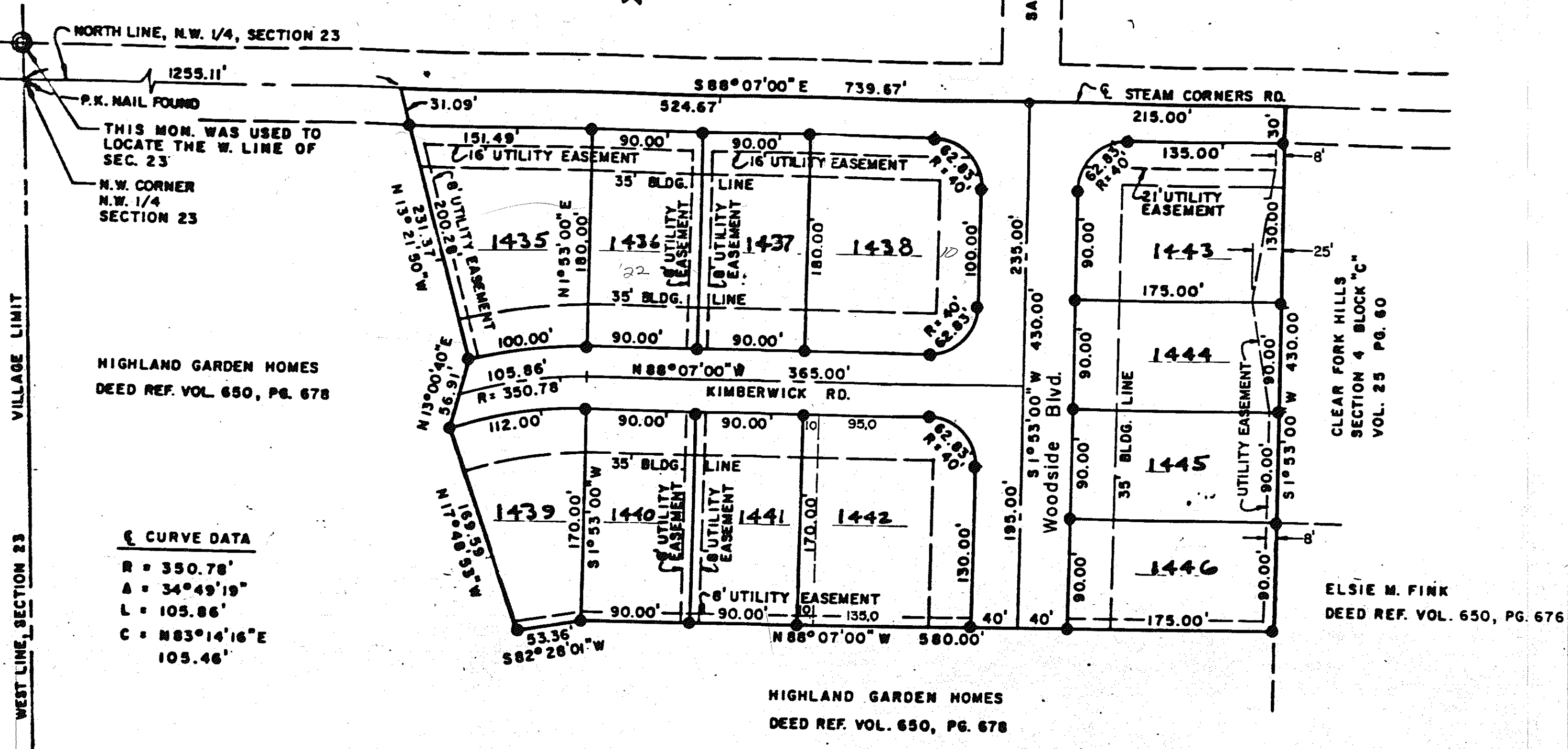


WOODSIDE BLOCK "A"



CLEAR FORK HILLS
VOL. 19

SECTION 2 BLOCK "B"
PG. 140



THIS MON. WAS USED TO
LOCATE THE W. LINE OF
SEC. 23

N.W. CORNER
N.W. 1/4
SECTION 23

HIGHLAND GARDEN HOMES
DEED REF. VOL. 650, PG. 678

⊂ CURVE DATA

R	=	350.78'
A	=	34°49'19"
L	=	105.86'
C	=	N83°14'16"E 105.46'

CLEAR FORK HILLS
SECTION 4 BLOCK "C"
VOL. 25 PG. 60

ELSIE M. FINK
DEED REF. VOL. 650, PG. 676

HIGHLAND GARDEN HOMES
DEED REF. VOL. 650, PG. 678