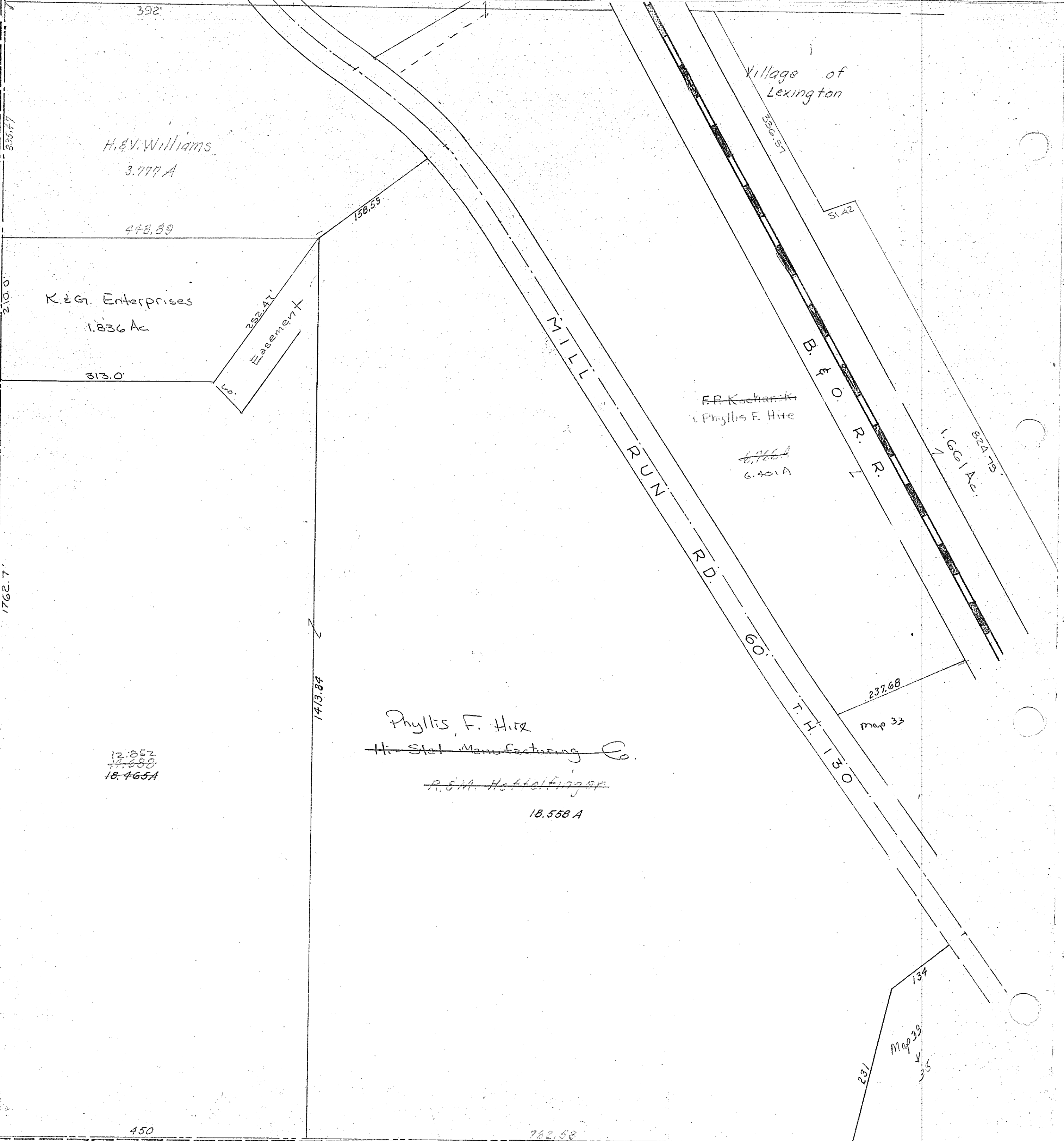


1M7-77MPC04250

CORP LINE WESTLINE S.E. QR. SEC. 24



335.77

392'

H. & V. Williams  
3.777 A

448.89

K & G. Enterprises  
1.836 Ac

313.0'

282.47'  
Easement

158.59

MILL RUN RD.

F.R. Kochanski  
& Phyllis F. Hix

~~6.166 A~~  
6.401 A

60'

T. H. 130

237.68

map 33

1.661 Ac

134

Map 33  
35

210.0'

1762.7'

1713.84

~~12.852~~  
~~17.588~~  
18.465 A

Phyllis F. Hix  
~~H. Steel Manufacturing Co.~~

~~R.M. Hoffeltinger~~

18.558 A

450

762.58

CORPORATION LINE SOUTH LINE S.E. QR. SEC. 24