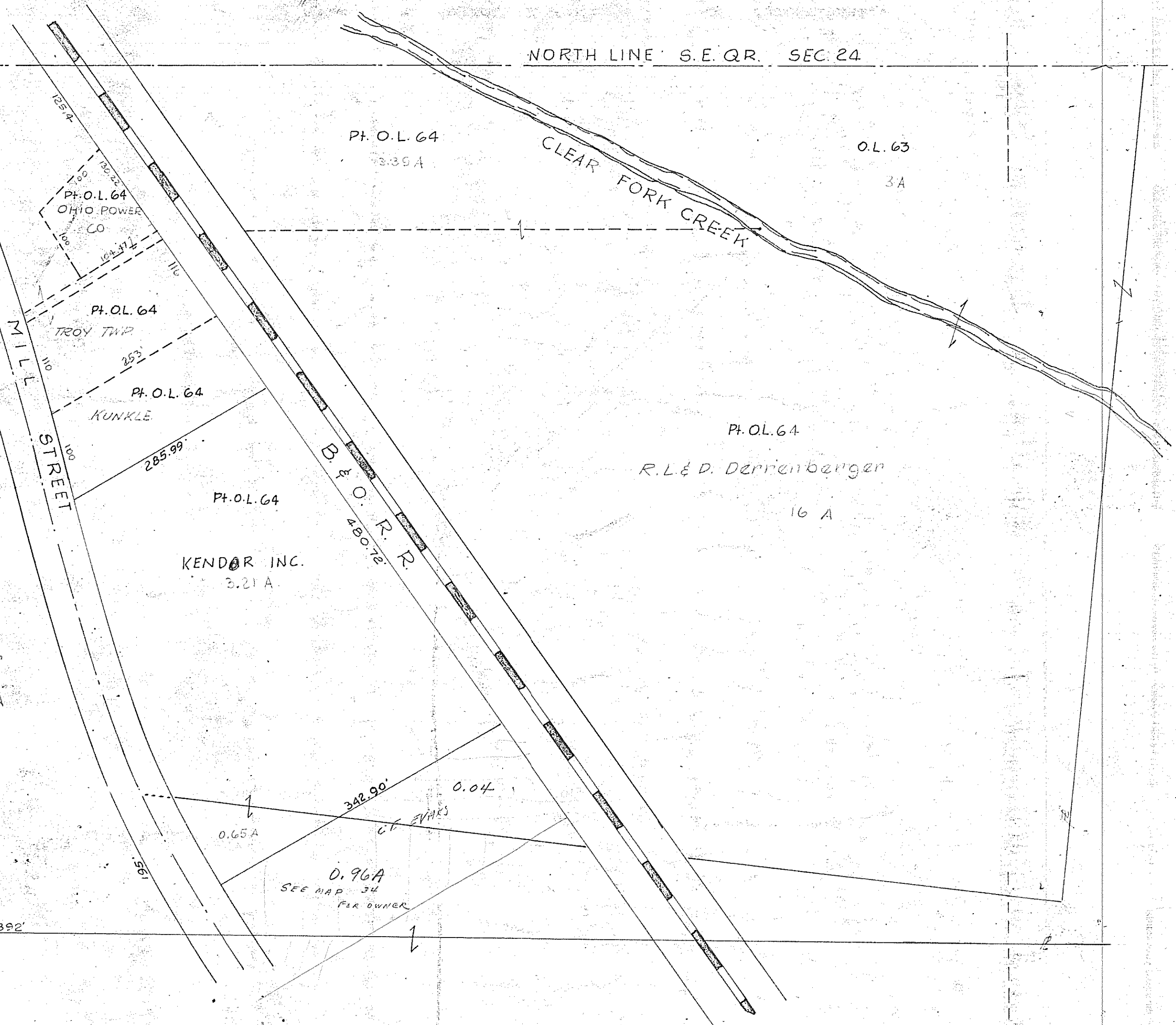


WEST LINE S.E. Q.R. SEC. 24

CORPORATION LINE

NORTH LINE S.E. Q.R. SEC. 24

WEST 1/2
S.E. Q.R. SEC. 24
EAST 1/2



~~D. & P. Kunkle~~
J. Weidner

SEE MAP # 5
(OWNERS NAMES)