

Corporation Line

North Line S.W. Q. Sec. 14

N 88° 07' N (approx)

GALION - LEXINGTON ROAD

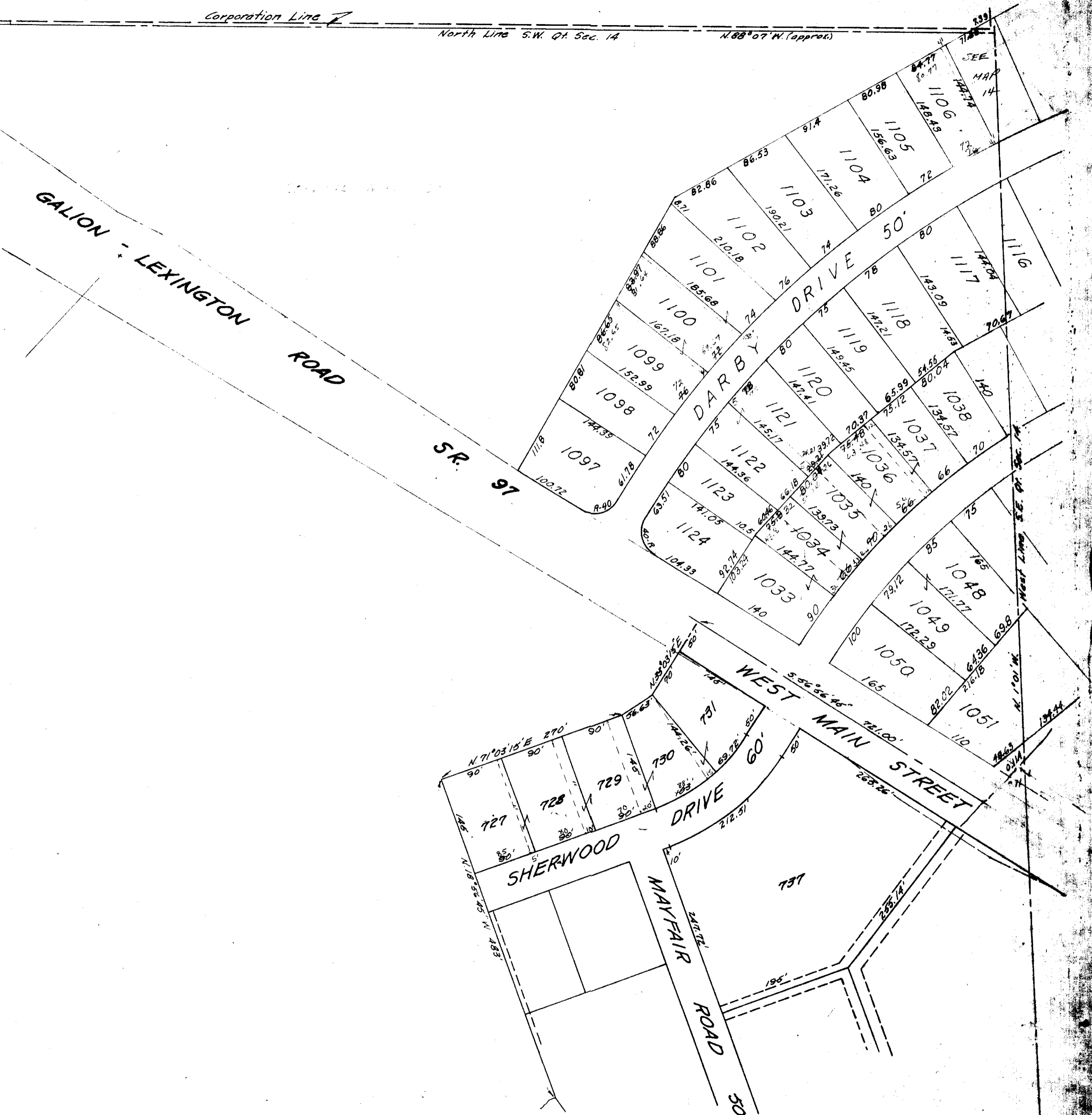
S.R. 97

DARB DRIVE

WEST MAIN STREET

SHERWOOD DRIVE

MAYFAIR ROAD



SEE MAP 14

20 44
23, Page 43
23 78

LEXINGTON

15