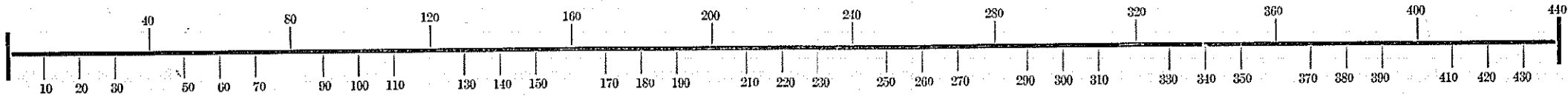


Assessment of Lots in the Town of

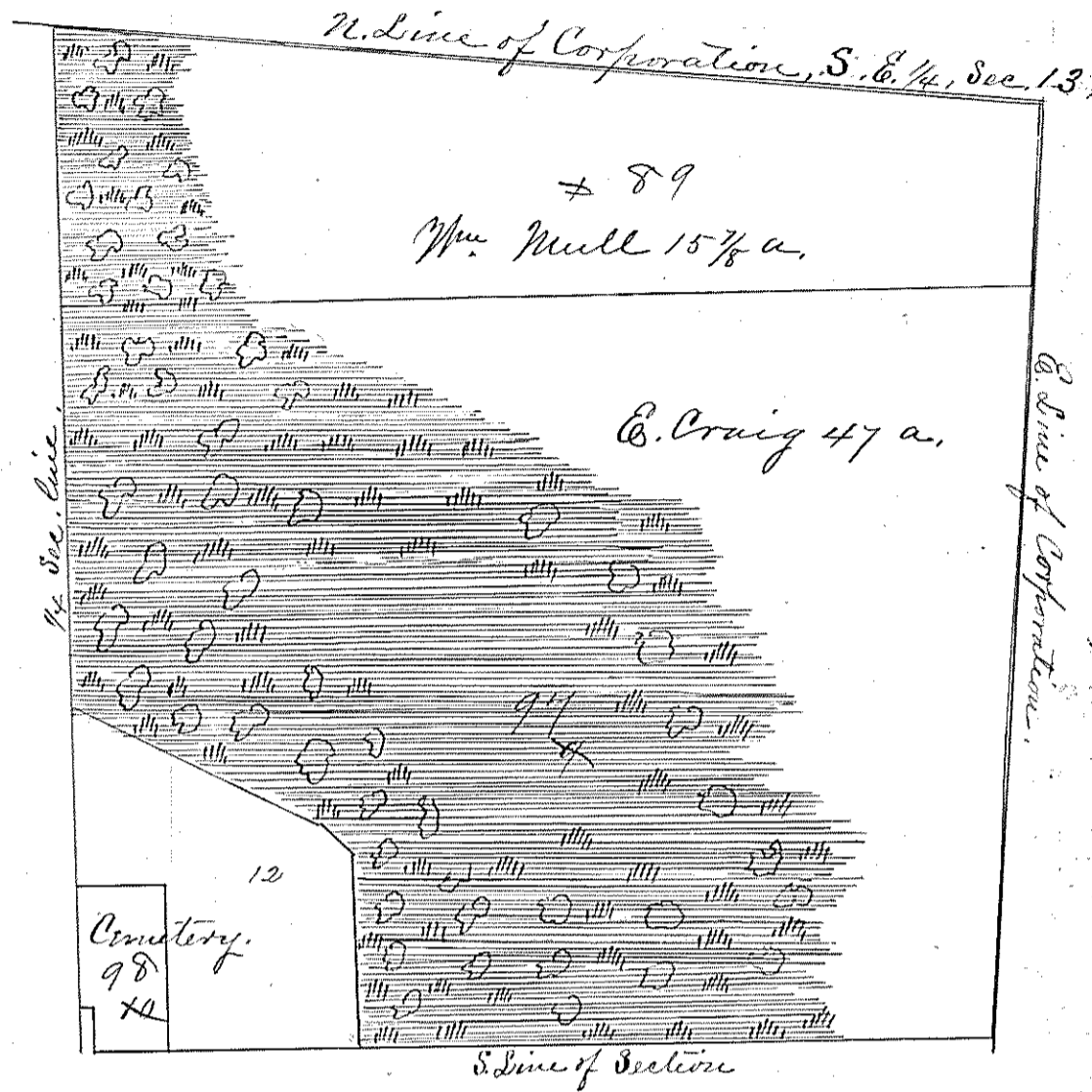
LOT

SCALE: Forty Feet to an Inch or Ten Feet to One-Quarter Inch.



Part of the Corporation of Lexington, being parts of
S.E. 1/4, Sec. 13, and S.W. 1/4, Sec. 13.

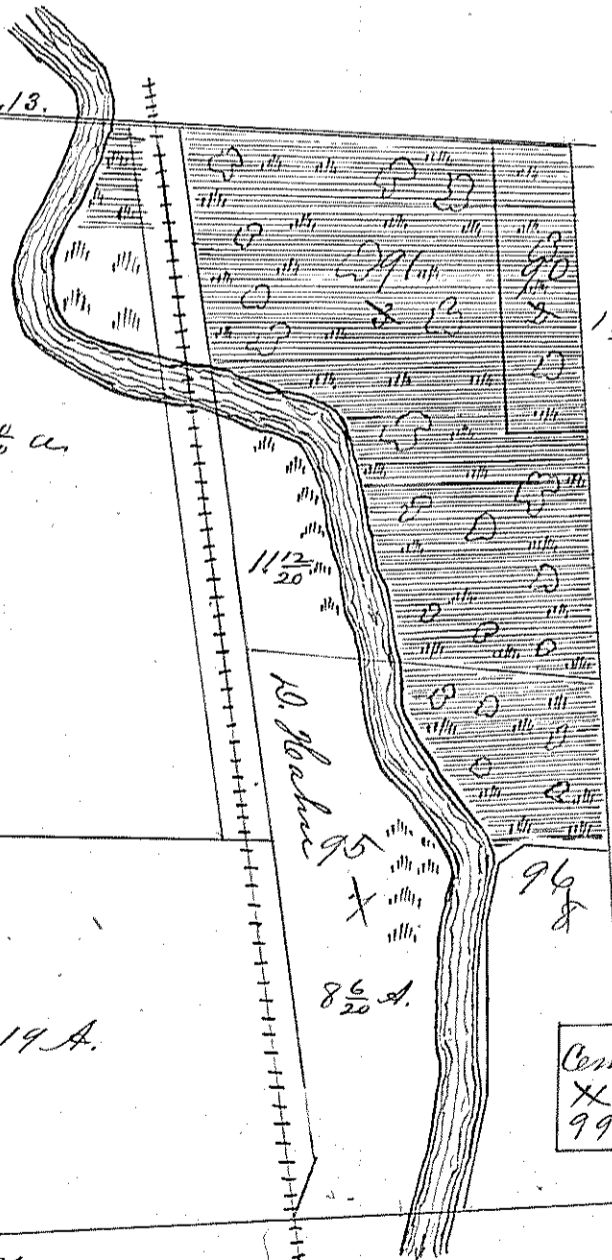
OK



N. Line of Corporation, S.W. 1/4, Sec. 13.

92

A. B. Beverstock 51 1/20 a.



OK

Sec. Line.

93

J. Cook 11 1/20 a.

94

M. Sowers 19 A.

10 Rods

8 1/20 A.

96

Cemetery
X
99

S. Line of Section.