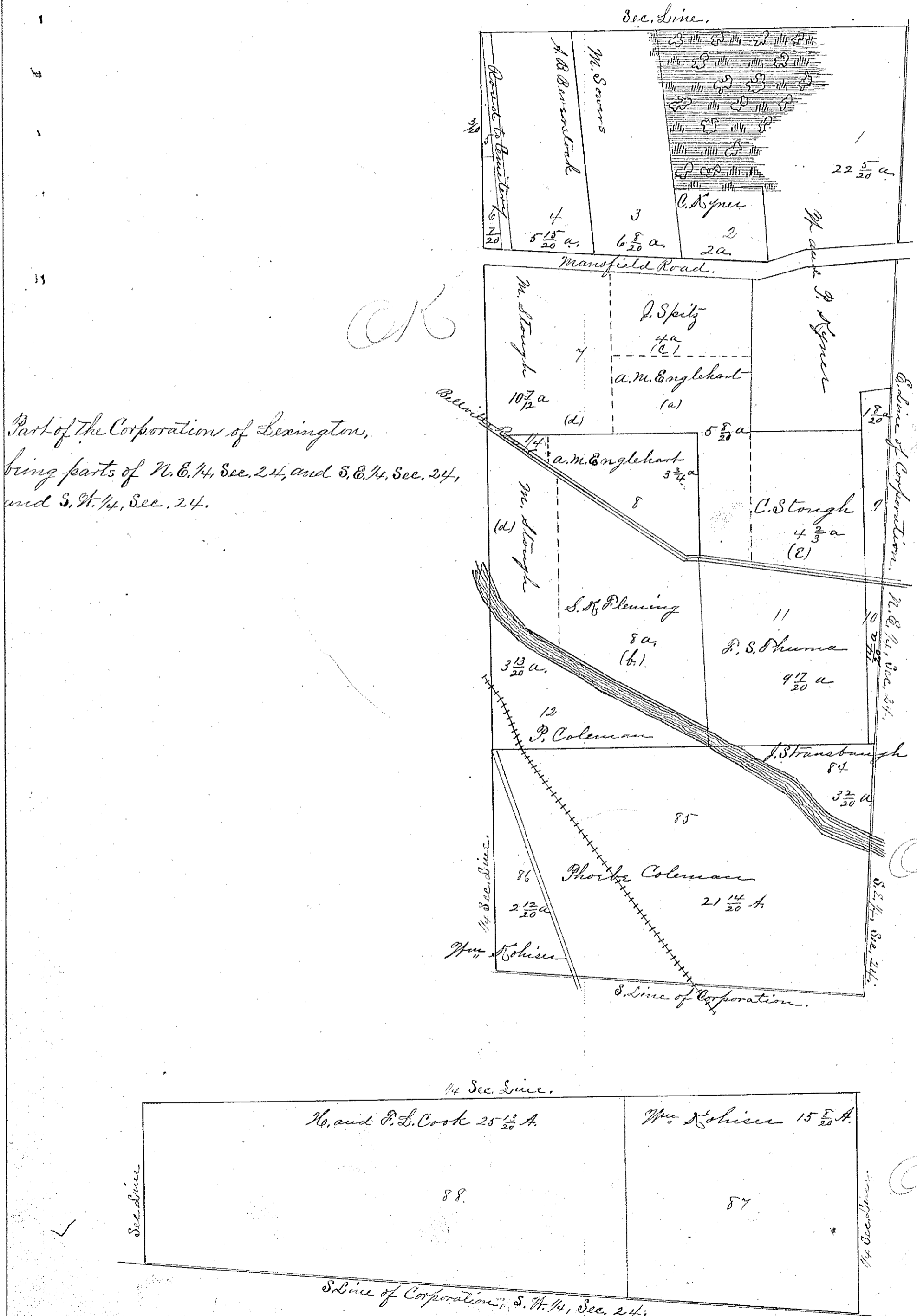
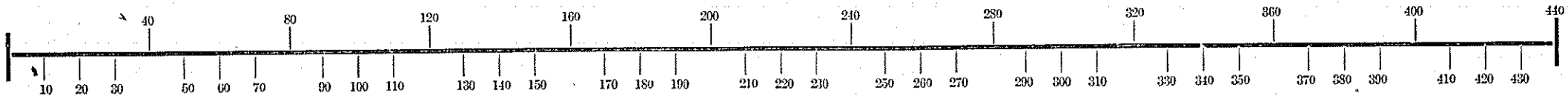


Assessment of Lots in the Town of

LOT

SCALE: ^{20 Rods} Forty Feet to an Inch or Ten Feet to One-Quarter Inch.



Part of the Corporation of Lexington,
being parts of N. E. 1/4, Sec. 24, and S. E. 1/4, Sec. 24,
and S. W. 1/4, Sec. 24.