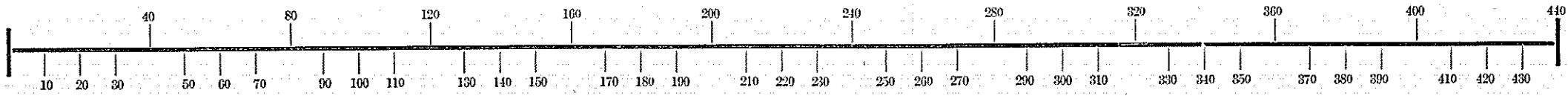


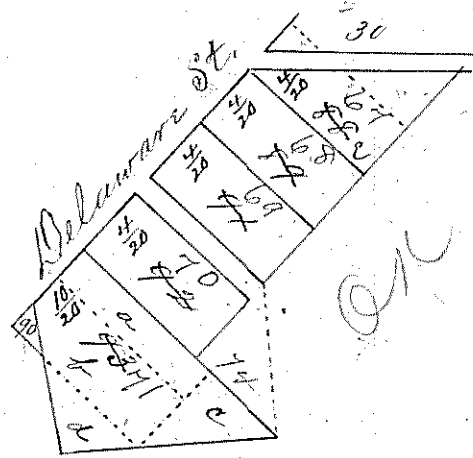
Assessment of Lots in the Town of

LOT

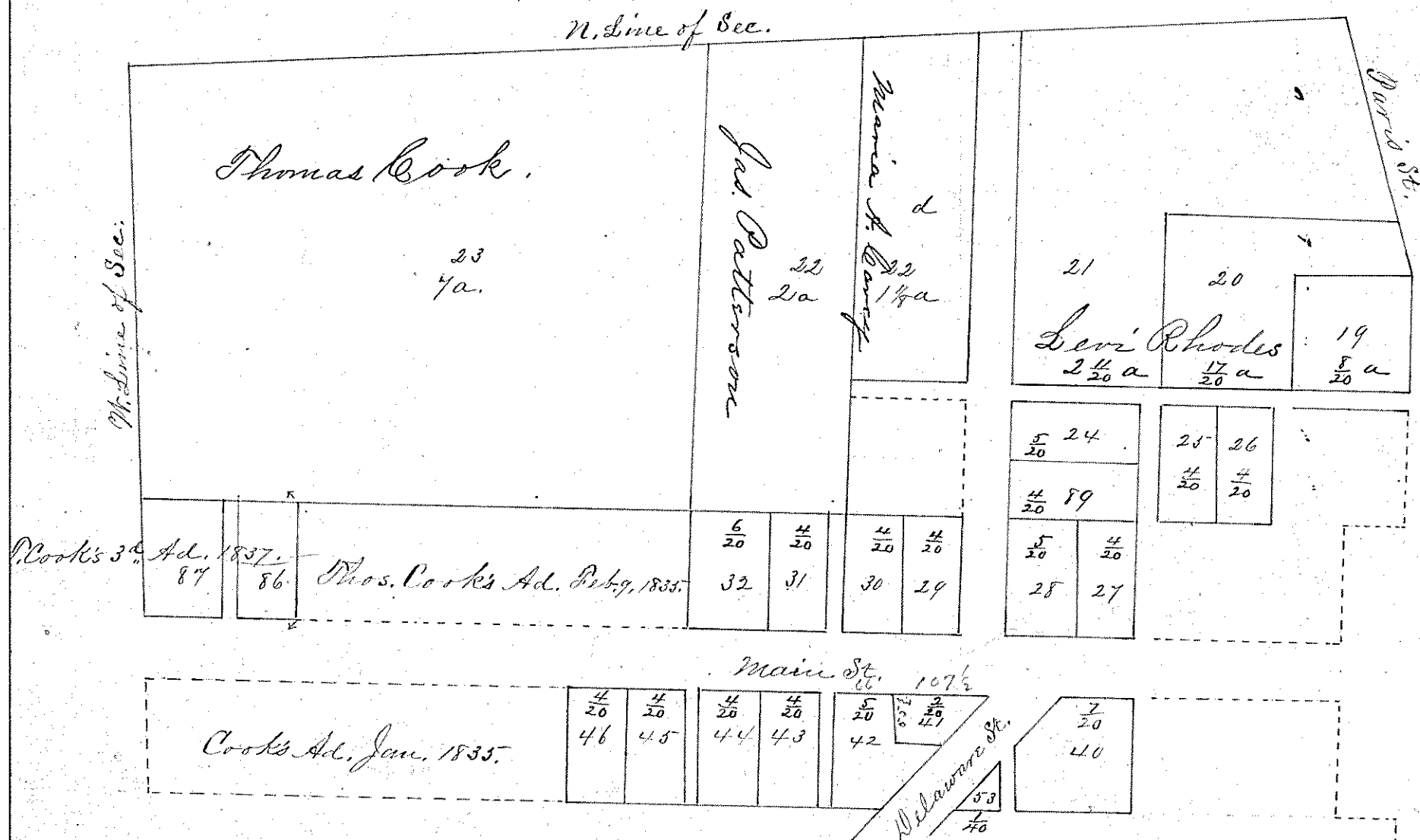
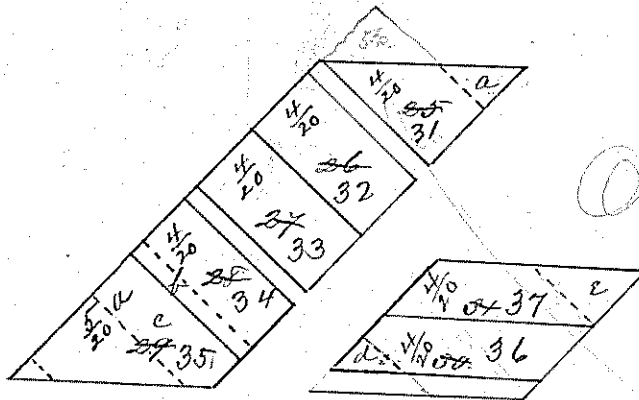
TEN RODS
SCALE: ~~Forty~~ Feet to an Inch or ~~Ten~~ Feet to One-Quarter Inch.



David Serviss' Addition,
March 1838.



R. Cunningham's Addition,
Feb'y 10, 1835.



That part of the Corporation of Lexington
lying in N.W. corner of N.W. 1/4, sec. 24, and
along N. Main St., and W. of Paris St.