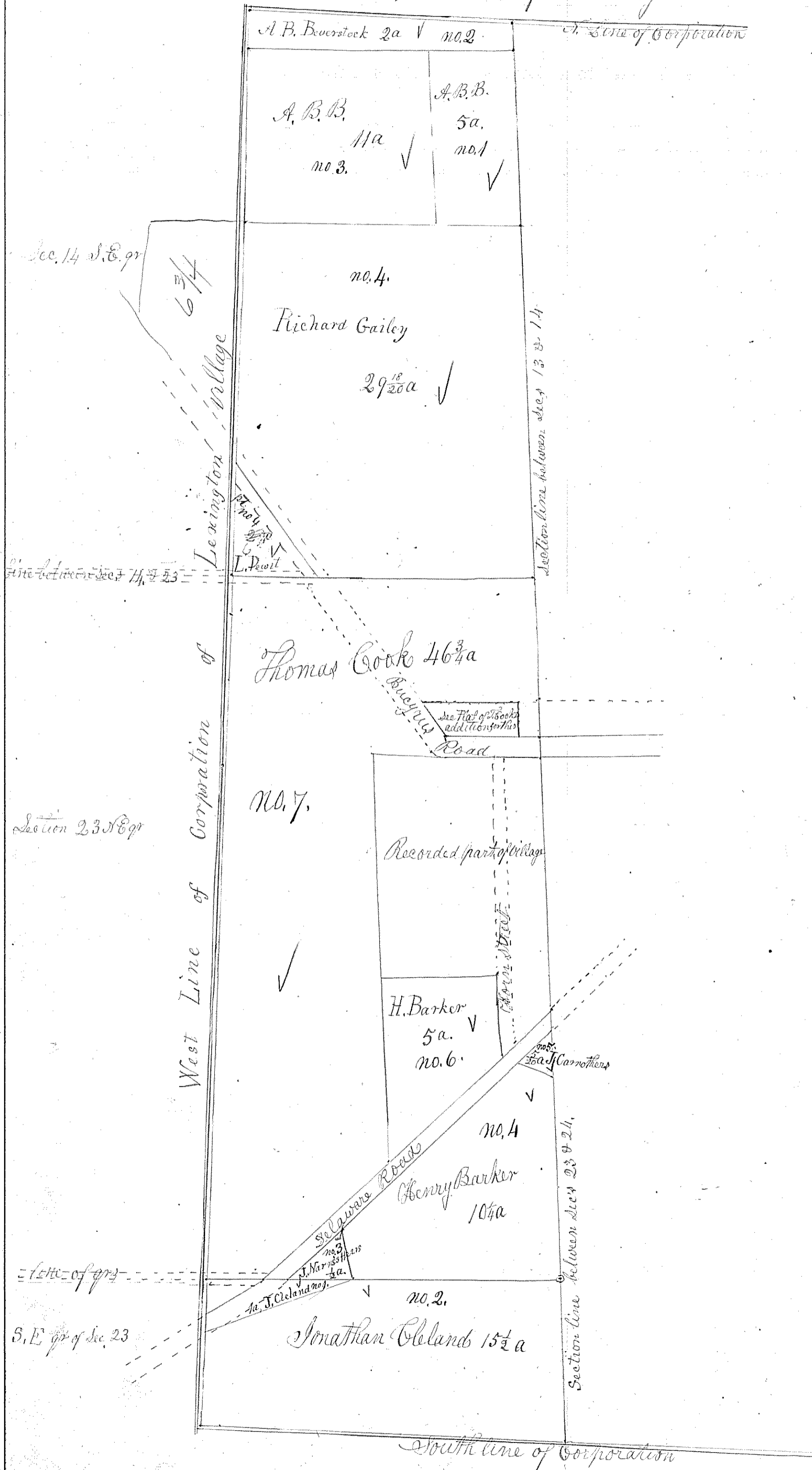


West part of the Corporation of Lexington



A. B. Beverstock 2a ✓ no. 2

West line of Corporation

A. B. B.

A. B. B.

no. 3. ✓

5a.

no. 1 ✓

Sec. 14 S. E. qtr

6 3/4

no. 4.

Richard Gailey

29 1/2 a ✓

Section line between sec 13 & 14

Lexington Village

Line between sec 14 & 23

L. Peoit

Thomas Cook 46 3/4 a

Business Road

see Plat of 15000 additional in this

Section 23 S. E. qtr

no. 7.

Recorded part of village

H. Barker

5a. ✓

no. 6.

see Plat of 15000 additional in this

West Line of Corporation of

no. 4

Henry Barker 10 1/4 a

Section line between sec 23 & 24.

Line of qtr

see Plat of 15000 additional in this

no. 2.

Jonathan Cleland 15 1/2 a

S. E. qtr of sec. 23

South line of Corporation