

VACATION OF FOLLOWING ALLEYS
O.R. V.368, P.547;
BETWEEN LOT 24, 25
LOT 2,3
LOT 3,4
LOT 4,5
LOT 30, 31
LOT 52,53
LOT 32,33
LOT 18,11
LOT 17,12
LOT 16,13
LOT 15,14
LOT 11,8,9,10
SOUTH OF LOT 51

(F-2-362)
B J & L BURRER
11-28-00
ORV857, P570
2.1448 AC TOT.
(14.397 AC IN SW SEC. 31)
(0.1652 AC IN PT. VAC. ST.)
(0.0441 AC IN PT. VAC. ALLEY)
(0.2479 AC IN LOT 53)
(0.2479 AC IN LOT 54)

(C) J & C IRELAN
1-26-01
ORV872, P128
0.9942 AC TOT.
(0.2322 AC IN SW SEC. 31)
(0.0950 AC IN PT. VAC. ST.)
(0.2383 AC IN PT. VAC. ALLEY)
(0.2263 AC IN PT. LOT 31)
(0.2024 AC IN LOT 52)

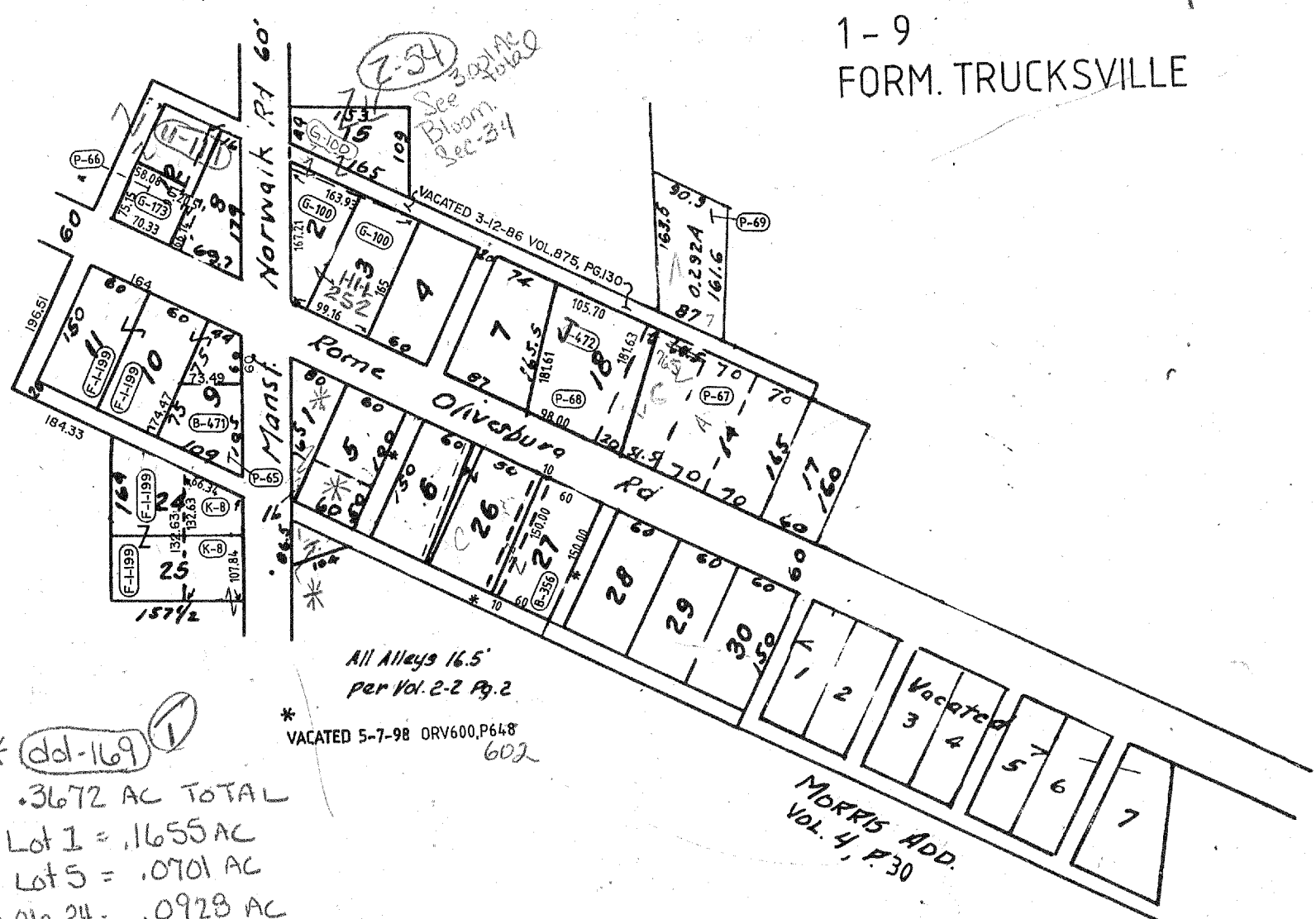
(F-2-362)
D A & F BAUMBERGER
11-29-00
ORV857, P615
0.8182 AC TOT.
(0.2721 AC IN SW SEC. 31)
(0.1253 AC IN PT. VAC. ST.)
(0.1060 AC IN PT. VAC. ALLEY)
(0.2479 AC IN LOT 51)
(0.0454 AC IN PT. LOT 52)
(0.0215 AC IN PT. LOT 31)

GANGES VILLAGE

BLOOMINGGROVE TWP.

2-3 PG 21 *Replat 24, Pg. 4*

1-9
FORM. TRUCKSVILLE



* dd-169
.3672 AC TOTAL
Lot 1 = .1655 AC
Pt. Lot 5 = .0701 AC
NE QTR 34 = .0928 AC
VAC ALLEY = .0388 AC

Vol. 2-2 P2
SHENANDOAH VILLAGE
BLOOMINGGROVE TWP.

1" = 200