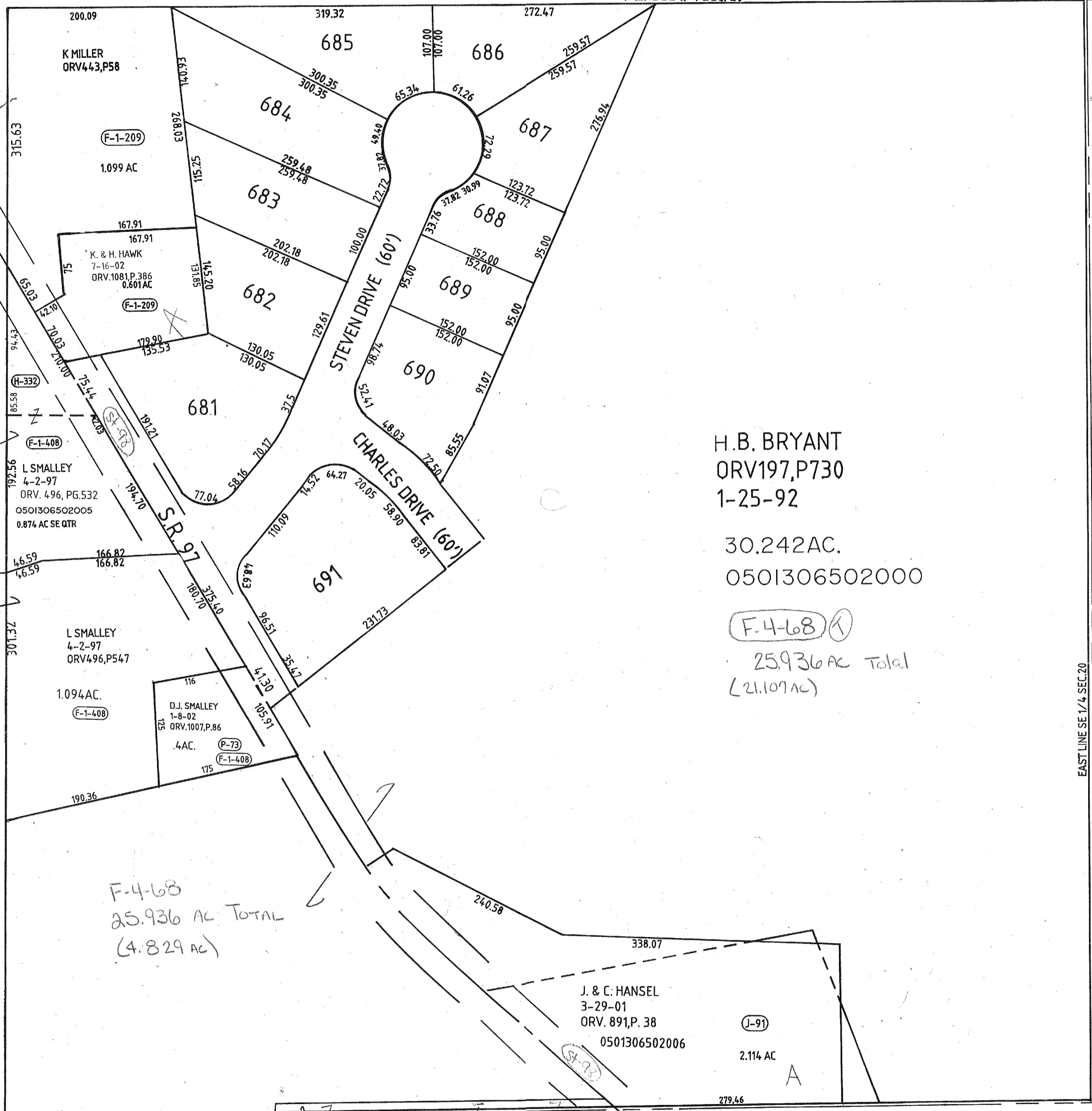


N LINE SE 1/4 SEC. 20



H. B. BRYANT
ORV197, P730
1-25-92

30.242 AC.
0501306502000

F-4-68 (1)
25.936 AC Total
(4.829 AC)

F-4-68
25.936 AC TOTAL
(4.829 AC)

J. & C. HANSEL
3-29-01
ORV. 891, P. 38
0501306502006

(J-91)
2.114 AC

CORPORATION LINE

D & P REEDER
D476, P196
23 AC

F-3-238
112.118 AC TOTAL
(.094)

LOTS 681-691
PLAT BOOK 27, PG. 43

BUTLER VILLAGE

21B

7-17-02

EAST LINE SE 1/4 SEC. 20

