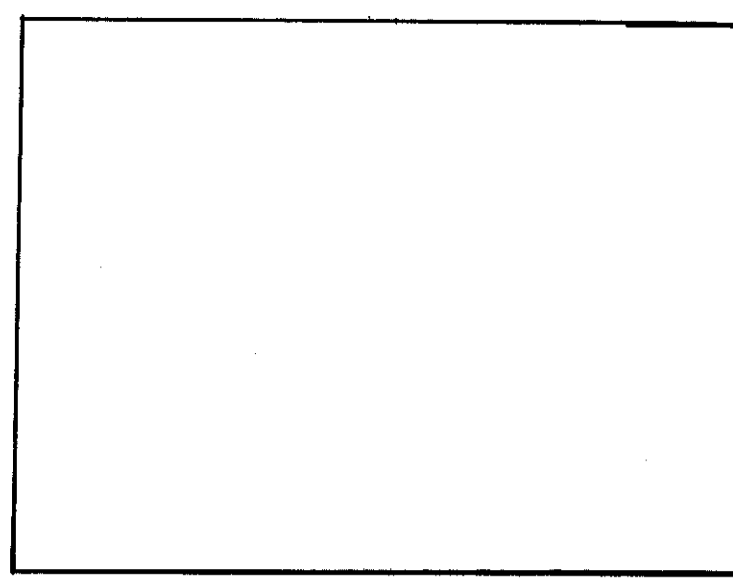


CLEVELAND

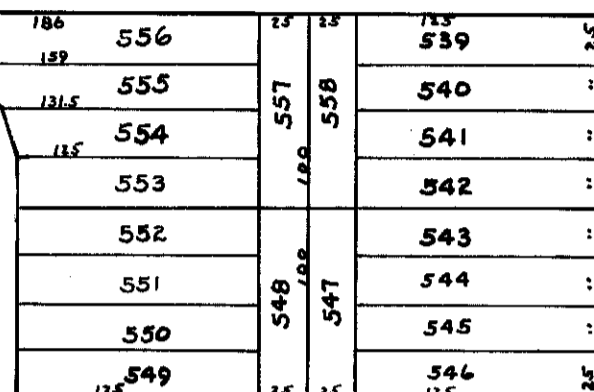
AVE

60

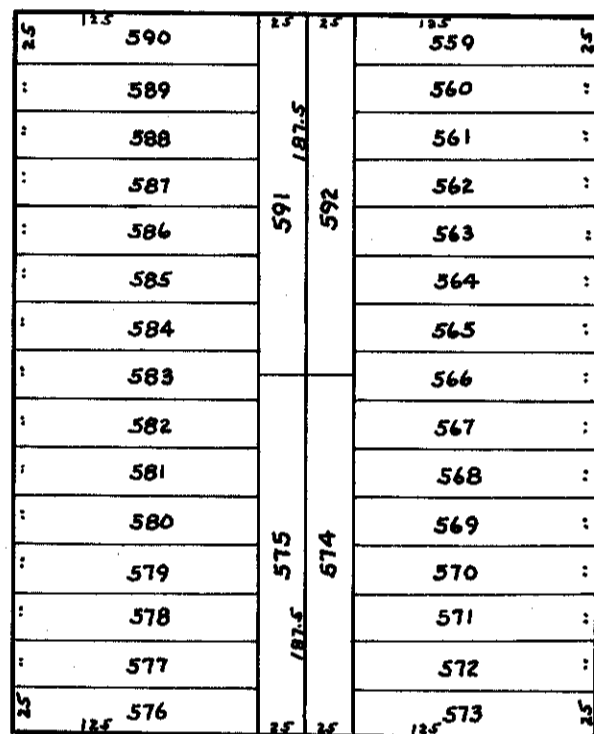
SR 97



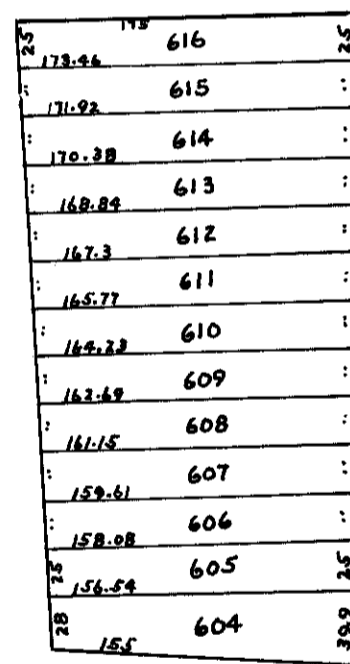
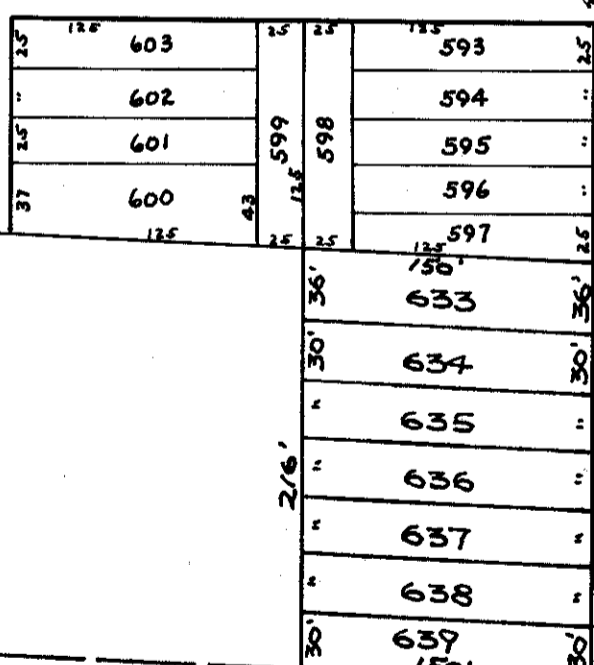
SCOTT AVE.



ROOSEVELT ST.



PERSHING ST.



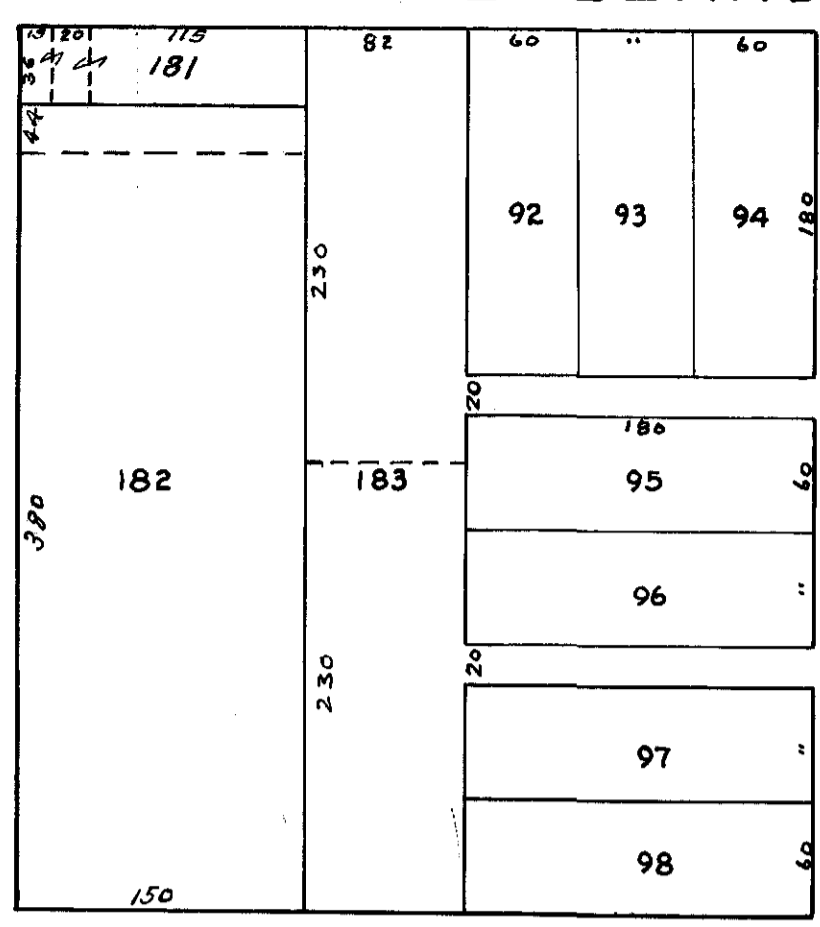
ST. 50'

CRAIG ST. 50'

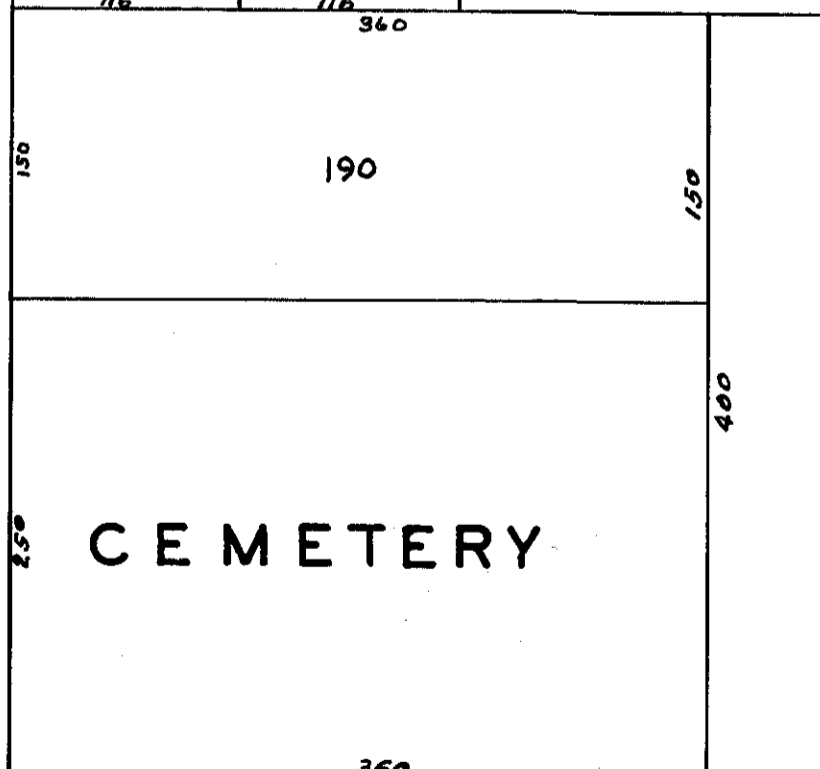
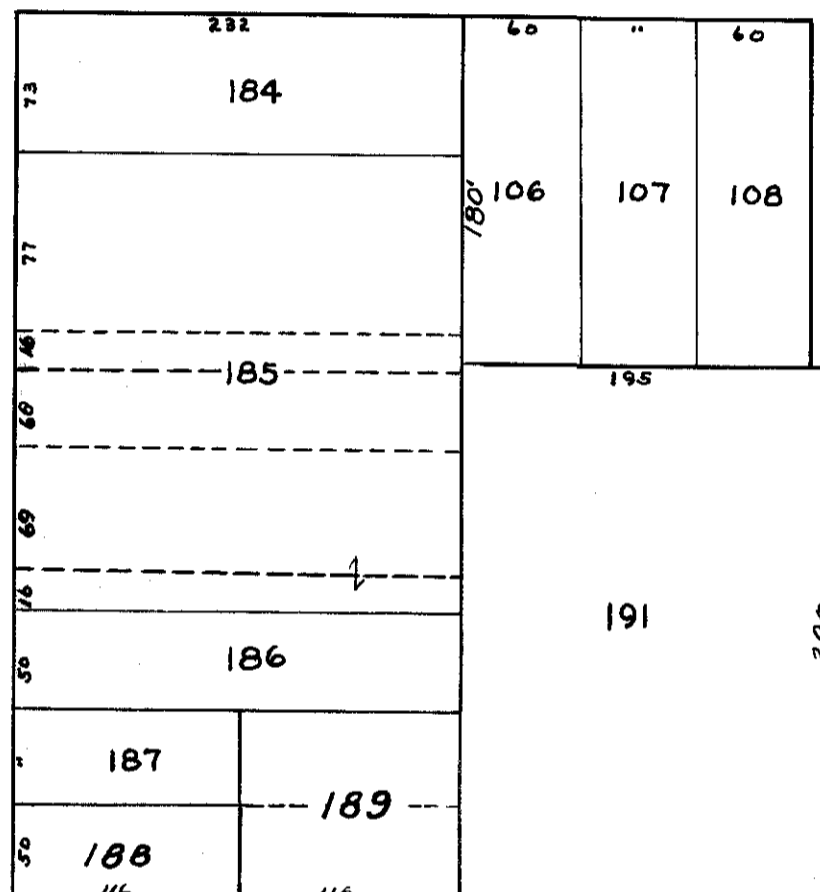
60

LIBERTY ST. 60

LIBERTY ST. 60

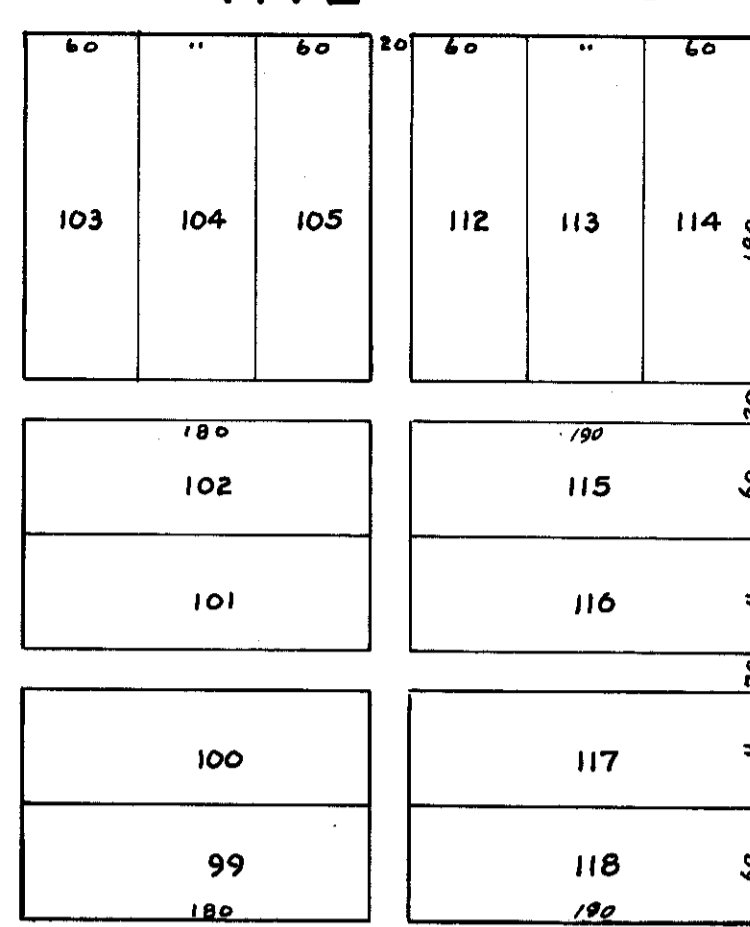


HIGH ST. 60'

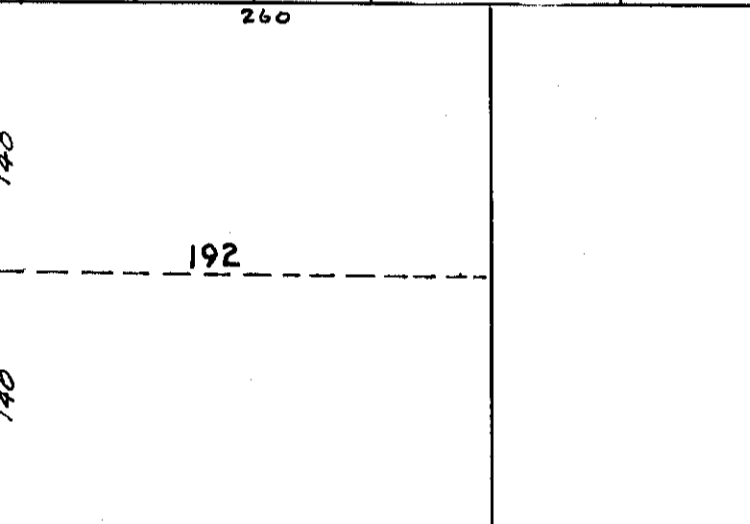
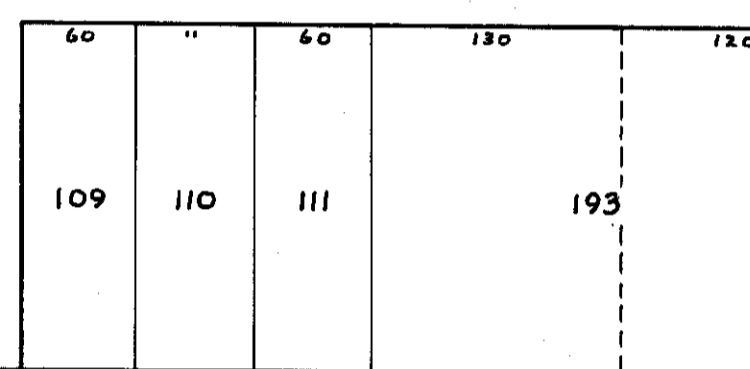


ST. 60

DRUMMOND ST. 60



ST. 60'



ST. 40

NARROW ST. 40

CEMETERY

O.L. 14

O.L. 15

3 1/4 A

O.L. 12

O.L. 13

1 4/5

2 1/3 A

BUTLER