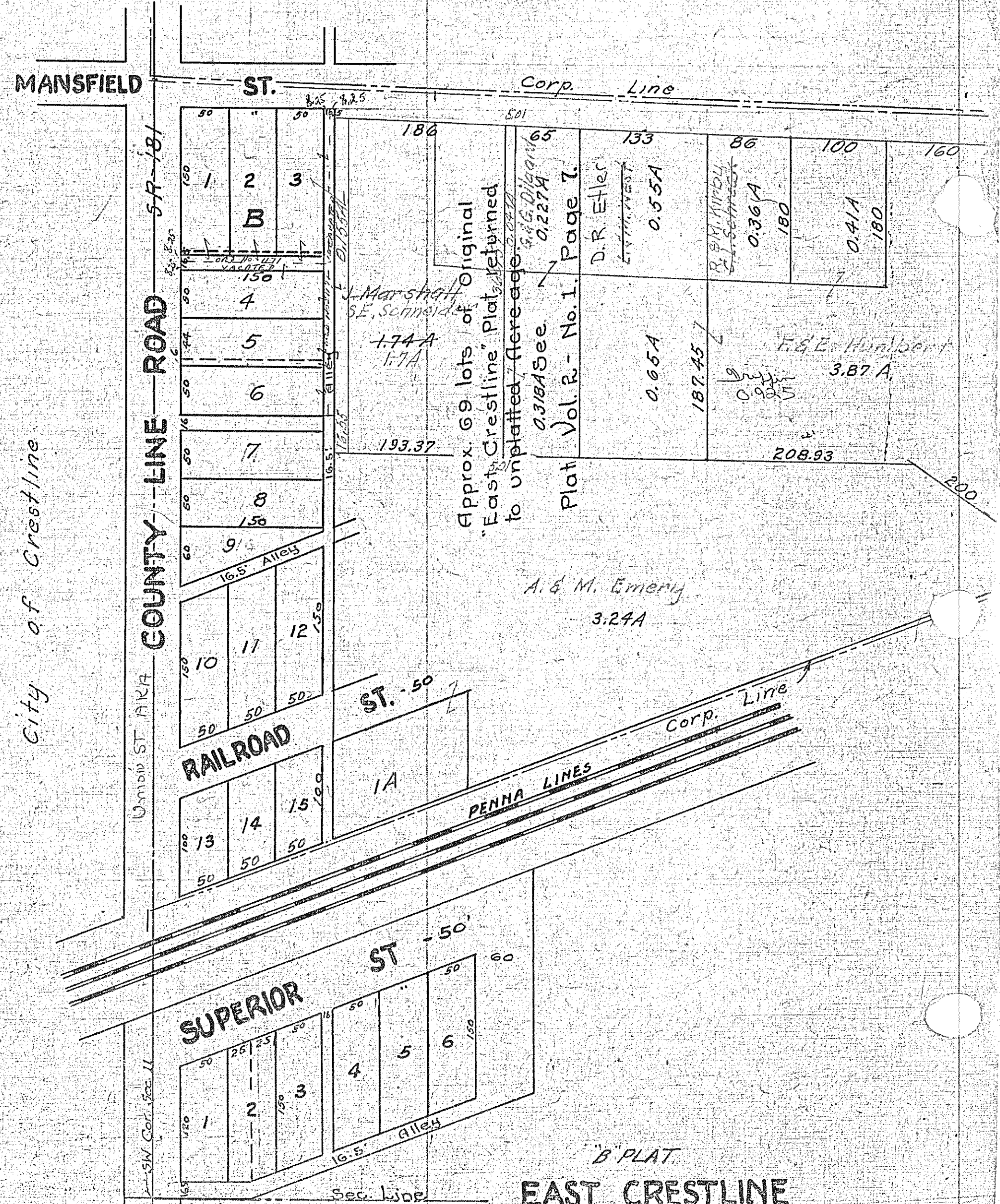


Vol. 2-#3- Pg. 1

Vol. 2-#3-Pg. 8

Original Plat
Vol 2-1 Page 11

EAST CRESTLINE
D. SELTZER ADDN



MANSFIELD ST.

COUNTY-LINE ROAD 5A-181

City of Crestline

Umbro ST AREA

RAILROAD

ST. - 50'

SUPERIOR ST - 50'

ST - 50'

PENNA LINES Corp. Line

Approx. 69 lots of Original
"East Crestline" Plat returned
to unplattd. acreage.

Plat Vol. R - No. 1 Page 7.

A. & M. Emery 3.24A

B PLAT
EAST CRESTLINE

S.W. 1/4 Sec. 11, SANDUSKY TWP.