

CLEVELAND

AVE

60

SR 97

SCOTT AVE.

CRAIG ST.

ROOSEVELT ST.

PERSHING ST.

60

LIBERTY ST.

HIGH ST.

ST.

60

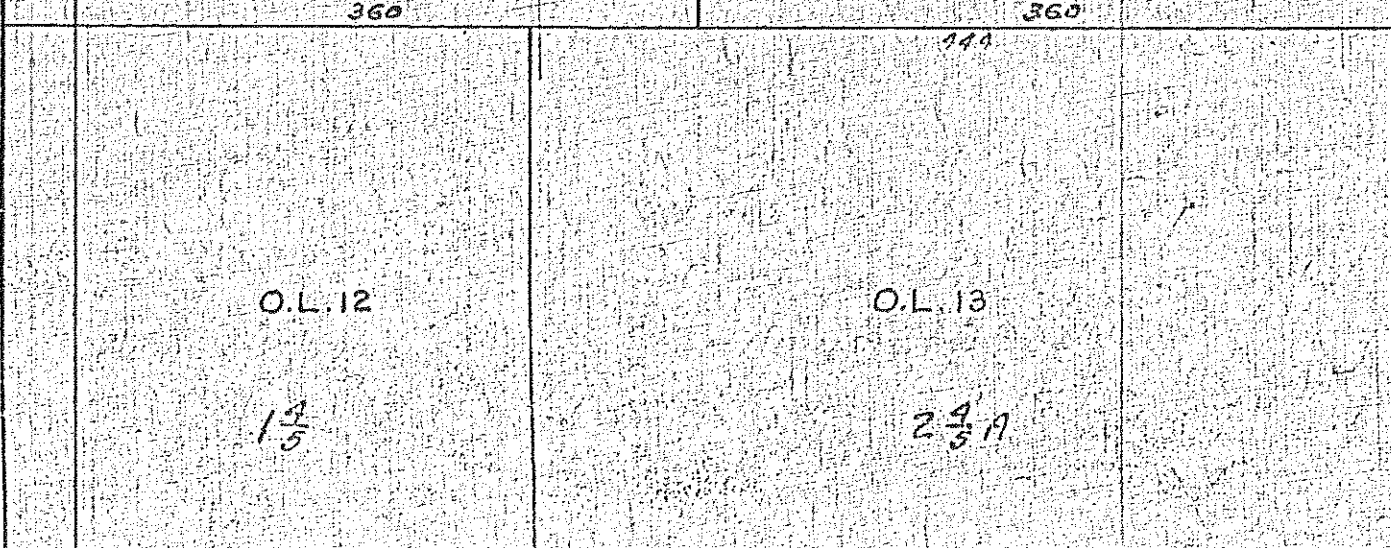
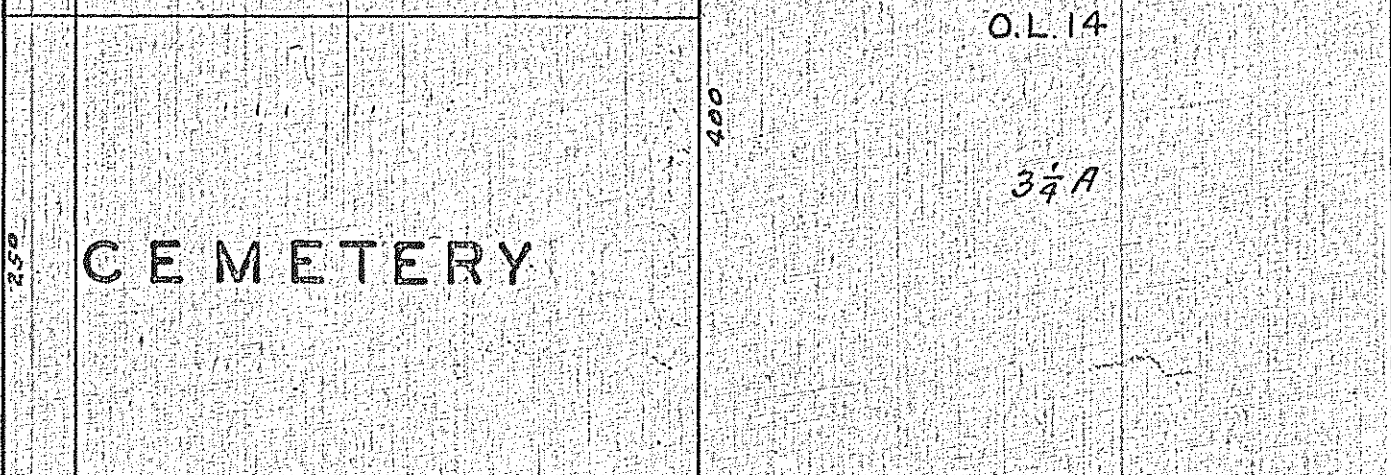
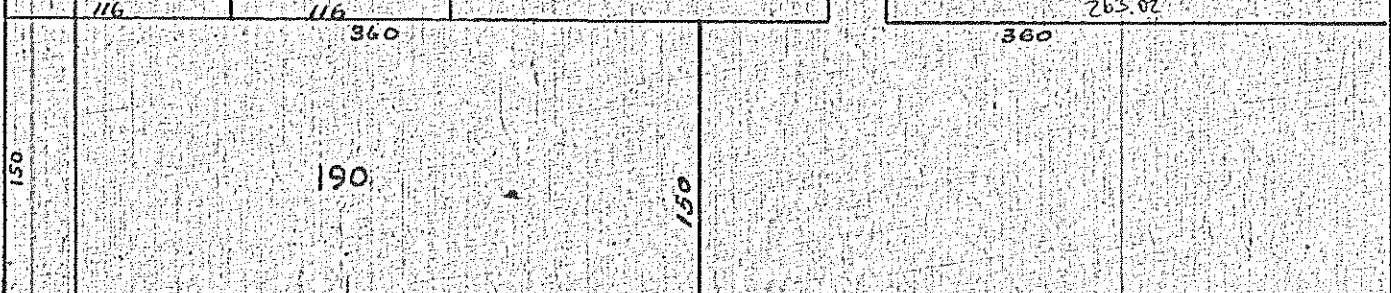
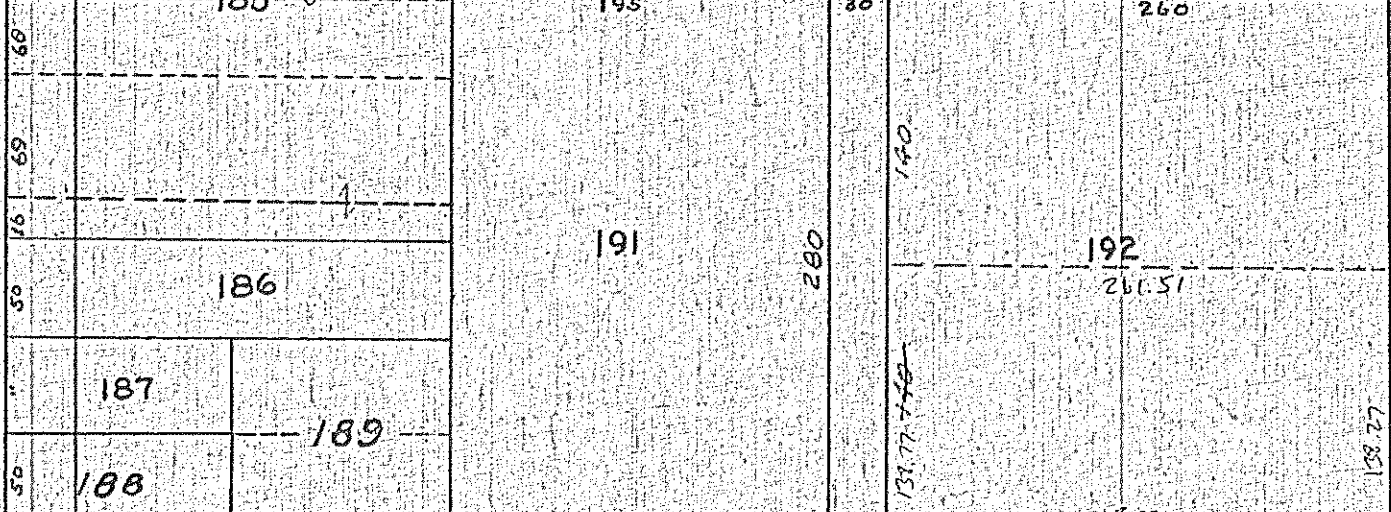
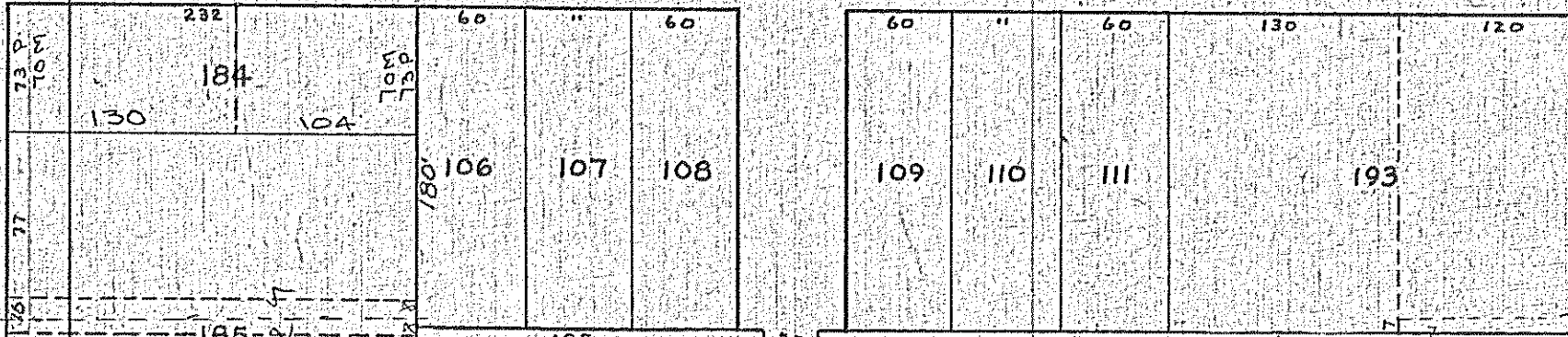
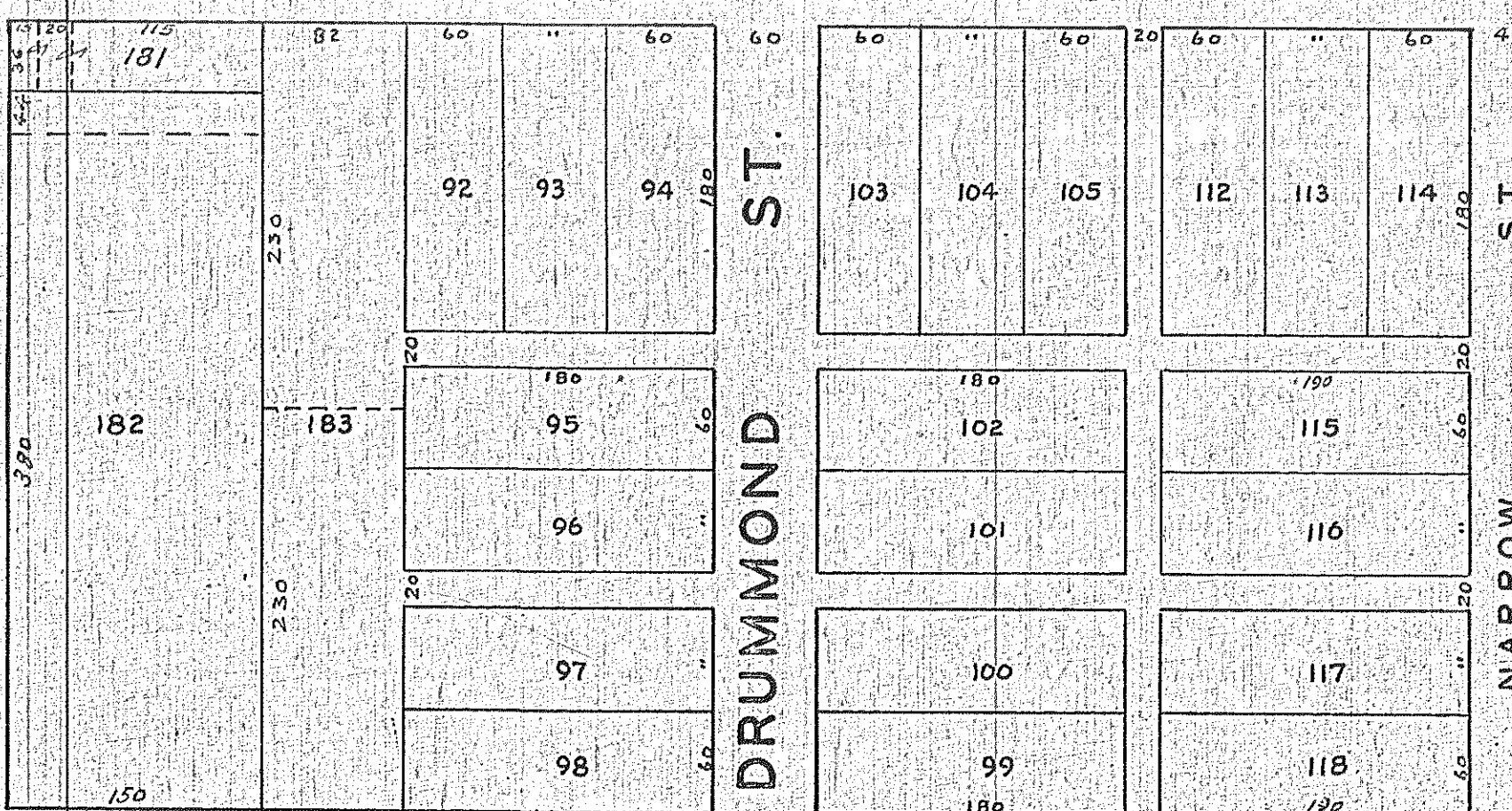
DRUMMOND ST.

NARROW ST.

| | | | | | | | |
|------------|-----|-----|-----|-----|-----|----|----|
| 186 159 | 556 | 23 | 23 | 123 | 539 | 25 | 25 |
| 131.5 | 555 | 557 | 558 | 113 | 540 | 25 | 25 |
| 135 | 554 | 541 | 542 | 541 | 542 | 25 | 25 |
| 553 | 543 | 544 | 545 | 543 | 544 | 25 | 25 |
| 552 | 544 | 545 | 546 | 544 | 545 | 25 | 25 |
| 551 | 545 | 546 | 547 | 545 | 546 | 25 | 25 |
| 550 | 546 | 547 | 548 | 546 | 547 | 25 | 25 |
| 549 | 547 | 548 | 549 | 547 | 548 | 25 | 25 |

| | | | | | | | |
|-------|-----|-----|-----|-----|-----|----|----|
| 186 | 556 | 23 | 23 | 123 | 539 | 25 | 25 |
| 131.5 | 555 | 557 | 558 | 113 | 540 | 25 | 25 |
| 135 | 554 | 541 | 542 | 541 | 542 | 25 | 25 |
| 553 | 543 | 544 | 545 | 543 | 544 | 25 | 25 |
| 552 | 544 | 545 | 546 | 544 | 545 | 25 | 25 |
| 551 | 545 | 546 | 547 | 545 | 546 | 25 | 25 |
| 550 | 546 | 547 | 548 | 546 | 547 | 25 | 25 |
| 549 | 547 | 548 | 549 | 547 | 548 | 25 | 25 |

| | | | |
|--------|-----|----|----|
| 173.21 | 616 | 25 | 25 |
| 171.92 | 615 | 25 | 25 |
| 170.30 | 614 | 25 | 25 |
| 167.84 | 613 | 25 | 25 |
| 167.3 | 612 | 25 | 25 |
| 165.77 | 611 | 25 | 25 |
| 164.23 | 610 | 25 | 25 |
| 162.69 | 609 | 25 | 25 |
| 161.15 | 608 | 25 | 25 |
| 159.61 | 607 | 25 | 25 |
| 158.08 | 606 | 25 | 25 |
| 156.54 | 605 | 25 | 25 |
| 155 | 604 | 25 | 25 |



BUTLER

PIATT
VOL 10 Pg 18