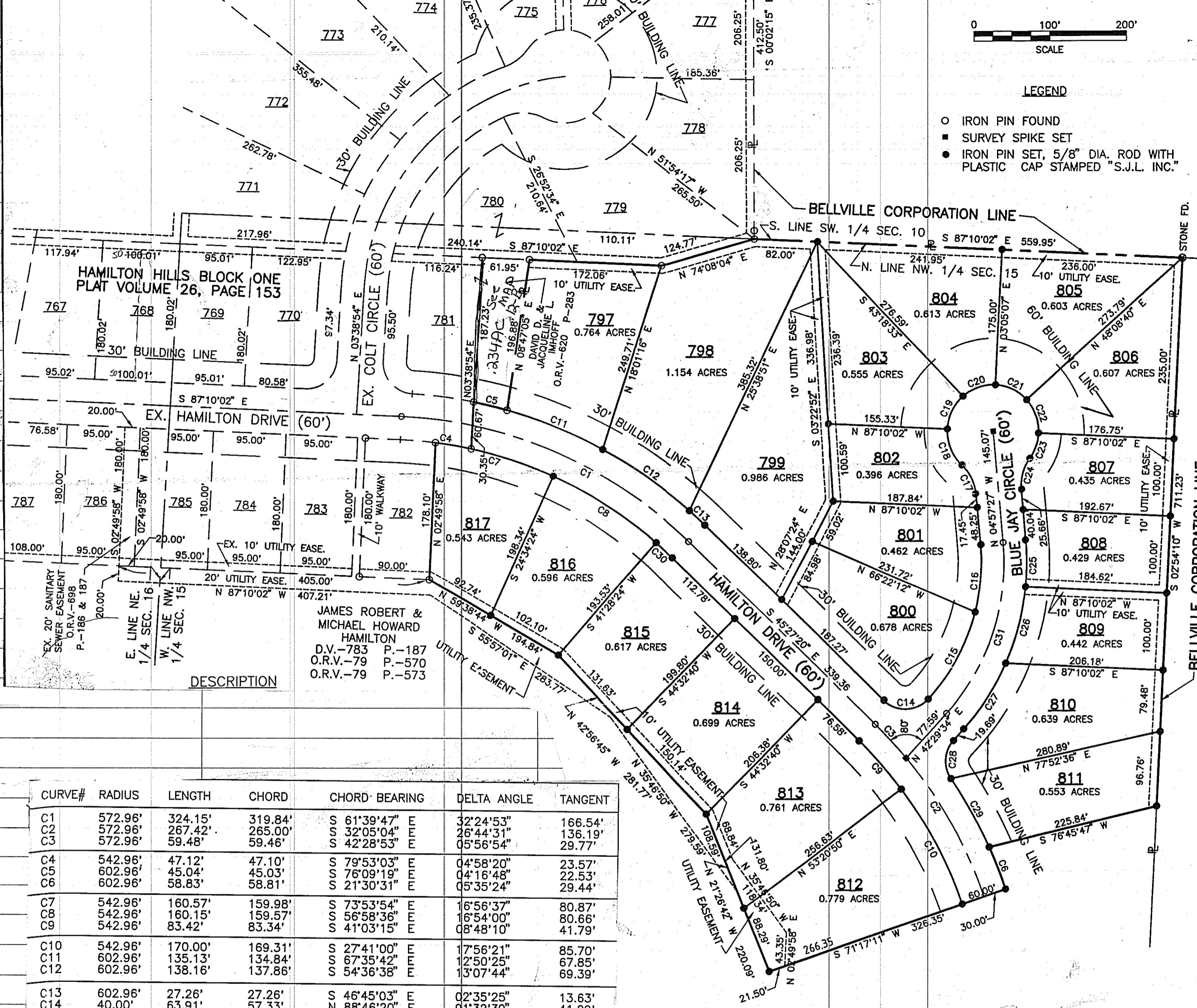
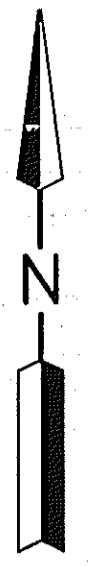


LEGEND

- IRON PIN FOUND
- SURVEY SPIKE SET
- IRON PIN SET, 5/8" DIA. ROD WITH PLASTIC CAP STAMPED "S.J.L. INC."



JAMES ROBERT &
MICHAEL HOWARD
HAMILTON
D.V.-783 P.-187
O.R.V.-79 P.-570
O.R.V.-79 P.-573

DESCRIPTION

CURVE#	RADIUS	LENGTH	CHORD	CHORD BEARING	DELTA ANGLE	TANGENT
C1	572.96'	324.15'	319.84'	S 61°39'47" E	32°24'53"	166.54'
C2	572.96'	267.42'	265.00'	S 32°05'04" E	26°44'31"	136.19'
C3	572.96'	59.48'	59.46'	S 42°28'53" E	05°56'54"	29.77'
C4	542.96'	47.12'	47.10'	S 79°53'03" E	04°58'20"	23.57'
C5	602.96'	45.04'	45.03'	S 76°09'19" E	04°16'48"	22.53'
C6	602.96'	58.83'	58.81'	S 21°30'31" E	05°35'24"	29.44'
C7	542.96'	160.57'	159.98'	S 73°53'54" E	16°56'37"	80.87'
C8	542.96'	160.15'	159.57'	S 56°58'36" E	16°54'00"	80.66'
C9	542.96'	83.42'	83.34'	S 41°03'15" E	08°48'10"	41.79'
C10	542.96'	170.00'	169.31'	S 27°41'00" E	17°56'21"	85.70'
C11	602.96'	135.13'	134.84'	S 67°35'42" E	12°50'25"	67.85'
C12	602.96'	138.16'	137.86'	S 54°36'38" E	13°07'44"	69.39'
C13	602.96'	27.26'	27.26'	S 46°45'03" E	02°35'25"	13.63'
C14	40.00'	63.91'	57.33'	N 88°46'20" E	91°32'39"	41.09'
C15	260.00'	129.31'	127.98'	S 28°45'07" W	28°29'48"	66.02'
C16	260.00'	88.31'	87.89'	S 04°46'23" W	19°27'39"	44.58'
C17	60.00'	43.36'	42.43'	S 25°39'44" E	41°24'35"	22.68'
C18	60.00'	51.52'	49.95'	N 21°46'02" W	49°11'59"	27.47'
C19	60.00'	48.45'	47.15'	N 25°58'06" E	46°16'15"	25.64'
C20	60.00'	46.06'	44.93'	N 71°05'40" E	43°58'54"	24.23'
C21	60.00'	46.81'	45.63'	S 64°33'49" E	44°42'08"	24.67'
C22	60.00'	47.17'	45.97'	S 19°41'23" E	45°02'43"	24.88'
C23	60.00'	35.21'	34.70'	S 19°38'33" W	33°37'10"	18.13'
C24	60.00'	43.36'	42.43'	N 15°44'51" E	41°24'35"	22.68'
C25	320.00'	60.47'	60.38'	S 00°27'24" W	10°49'40"	30.33'
C26	320.00'	102.77'	102.33'	S 15°04'14" W	18°24'01"	51.83'
C27	320.00'	101.77'	101.34'	S 33°22'54" W	18°13'19"	51.32'
C28	40.00'	53.43'	49.55'	N 04°13'35" E	76°31'57"	31.55'
C29	602.96'	102.46'	102.34'	S 29°10'18" E	09°44'10"	51.35'
C30	542.96'	29.10'	29.10'	S 46°59'28" E	03°04'16"	14.55'
C31	290.00'	240.17'	233.36'	S 18°46'04" W	47°27'00"	127.45'

THE OHIO CONFERENCE OF THE UNITED CHURCH OF CHRIST,
A NON-PROFIT CORPORATION
D.V.-584 P.-569 THROUGH 576