

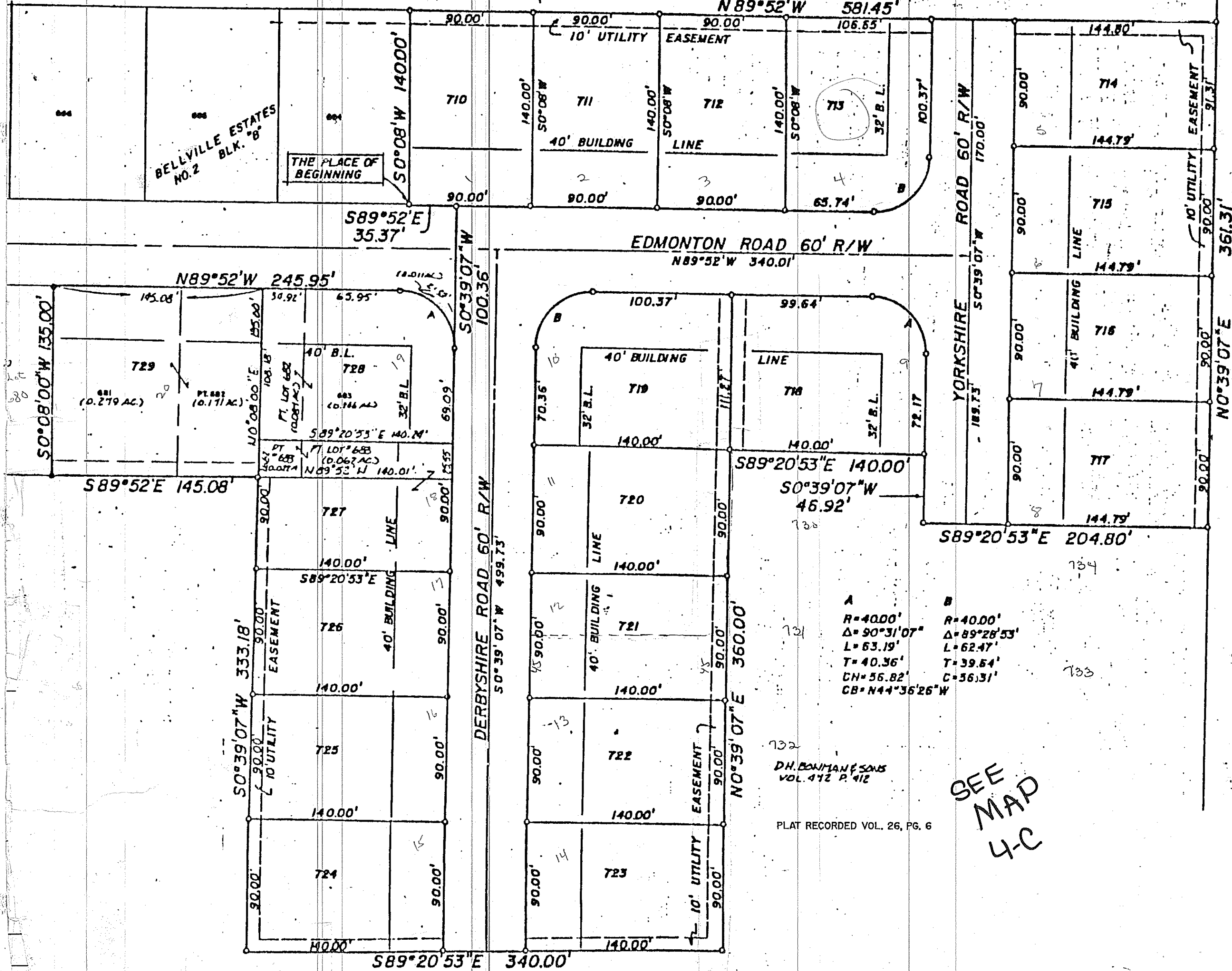
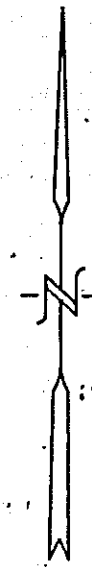
BELLVILLE ESTATES NUMBER 3

VILLAGE OF BELLVILLE
PT. S.W. 1/4 SEC. 3, T-19, R-18
JEFFERSON TOWNSHIP
RICHLAND COUNTY, OHIO

035979

REPLAT OF LOTS 681, 682 & 683
AS RECORDED IN PLAT VOL. 24 P. 6
PT. S.W. 1/4 SEC. 3 T-19 R-18
JEFFERSON TWP.
VILLAGE OF BELLVILLE, OHIO
(BELLVILLE ESTATES NO. 2 BLK. "B")

THE VILLAGE OF BELLVILLE
VOL. 24 P. 247
50 AC



A
R=40.00'
Δ=90°31'07"
L=63.19'
T=40.36'
CH=56.82'
CB=N44°36'26"W

B
R=40.00'
Δ=89°28'53"
L=62.47'
T=39.54'
C=36.31'

DH. BOWMAN & SONS
VOL. 412 P. 412

PLAT RECORDED VOL. 26, PG. 6

SEE
MAP
4-C

C. L. EMBESBERGER
VOL. 124 P. 505
35 AC