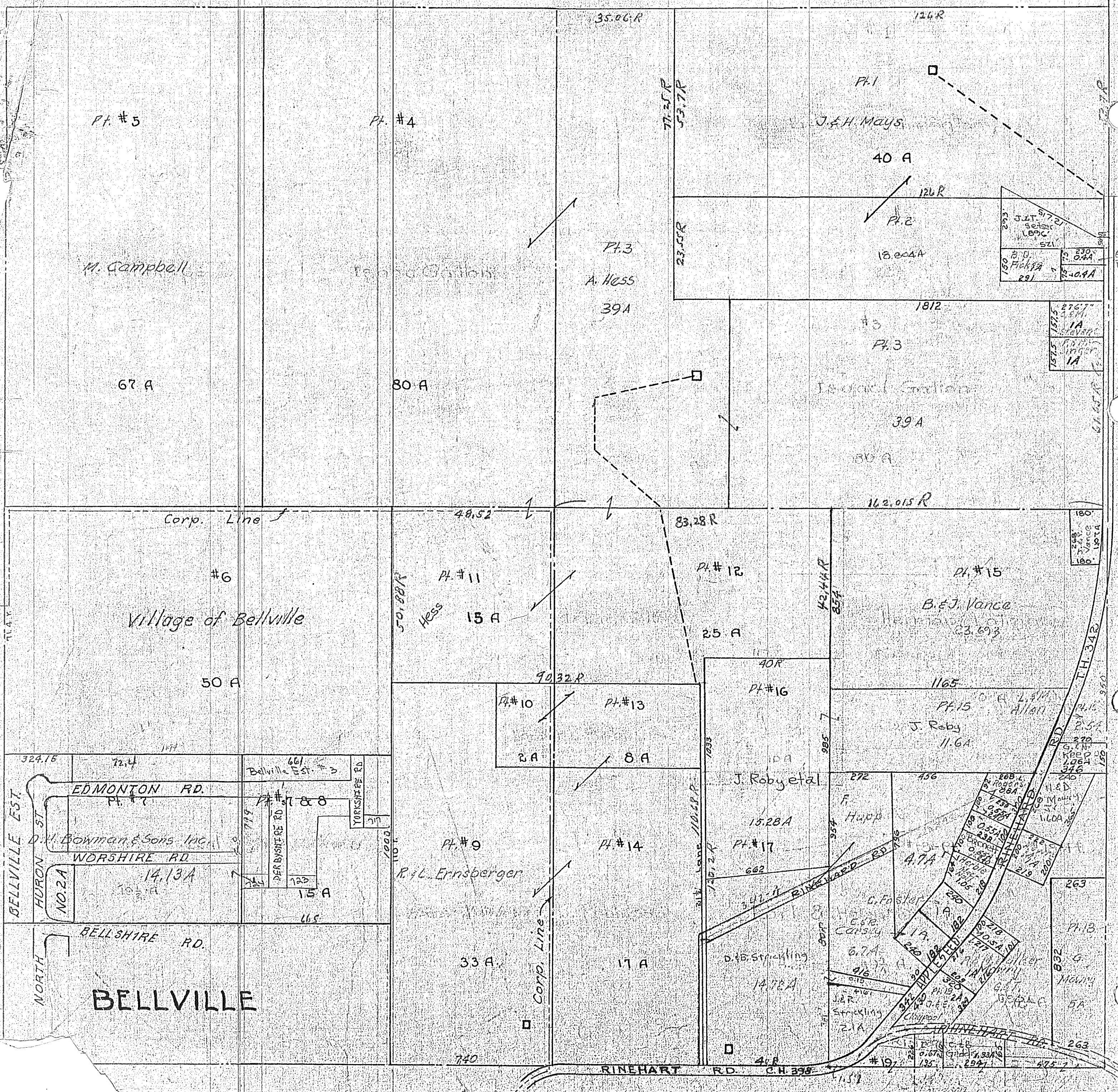


J



Pt. #5

Pt. #4

Pt. 1

M. Campbell

James G. Smith

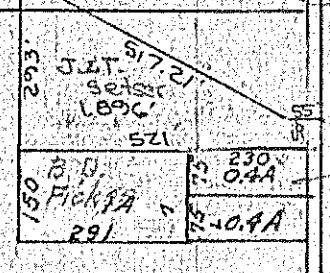
Pt. 3
A. Hess
39A

J. & H. Mays

40 A

Pt. 2

18.004A



67 A

80 A

1812

Pt. 3

James G. Smith

39A

80 A

162.015 R

Corp. Line

48.52

83.28 R

#6

Village of Bellville

Pt. #11

Hess
15 A

Pt. #12

25 A

Pt. #15

B. & J. Vance
23.693

50 A

90.32 R

Pt. #10

2 A

Pt. #13

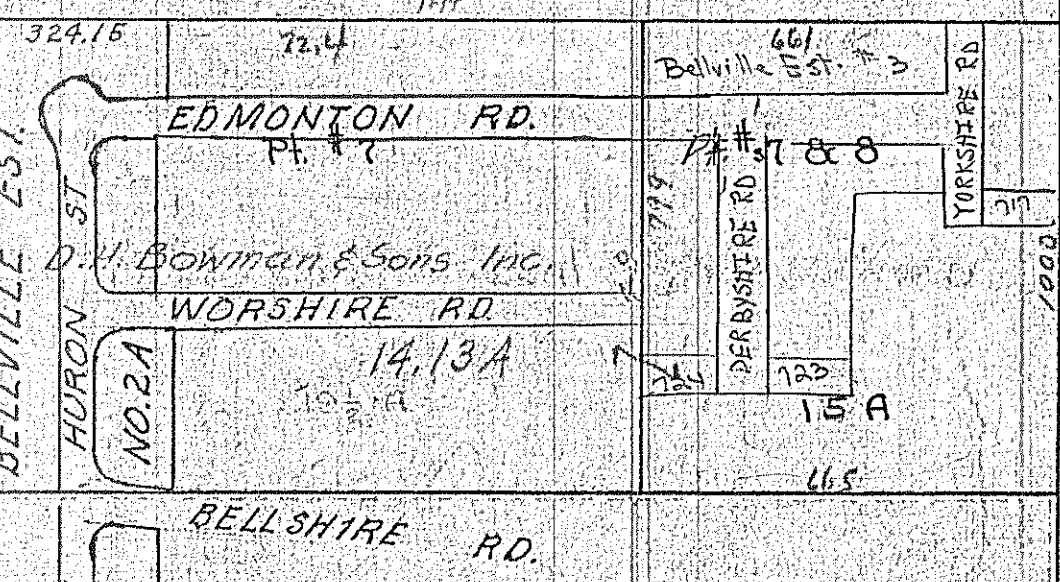
8 A

Pt. #16

J. Roby et al

Pt. #15

J. Roby
11.6A



Pt. #9

R. L. Ernberger

Pt. #14

17 A

33 A

BELLVILLE

TWA 19-R.18

JEFFERSON TWP.
SEC. 3