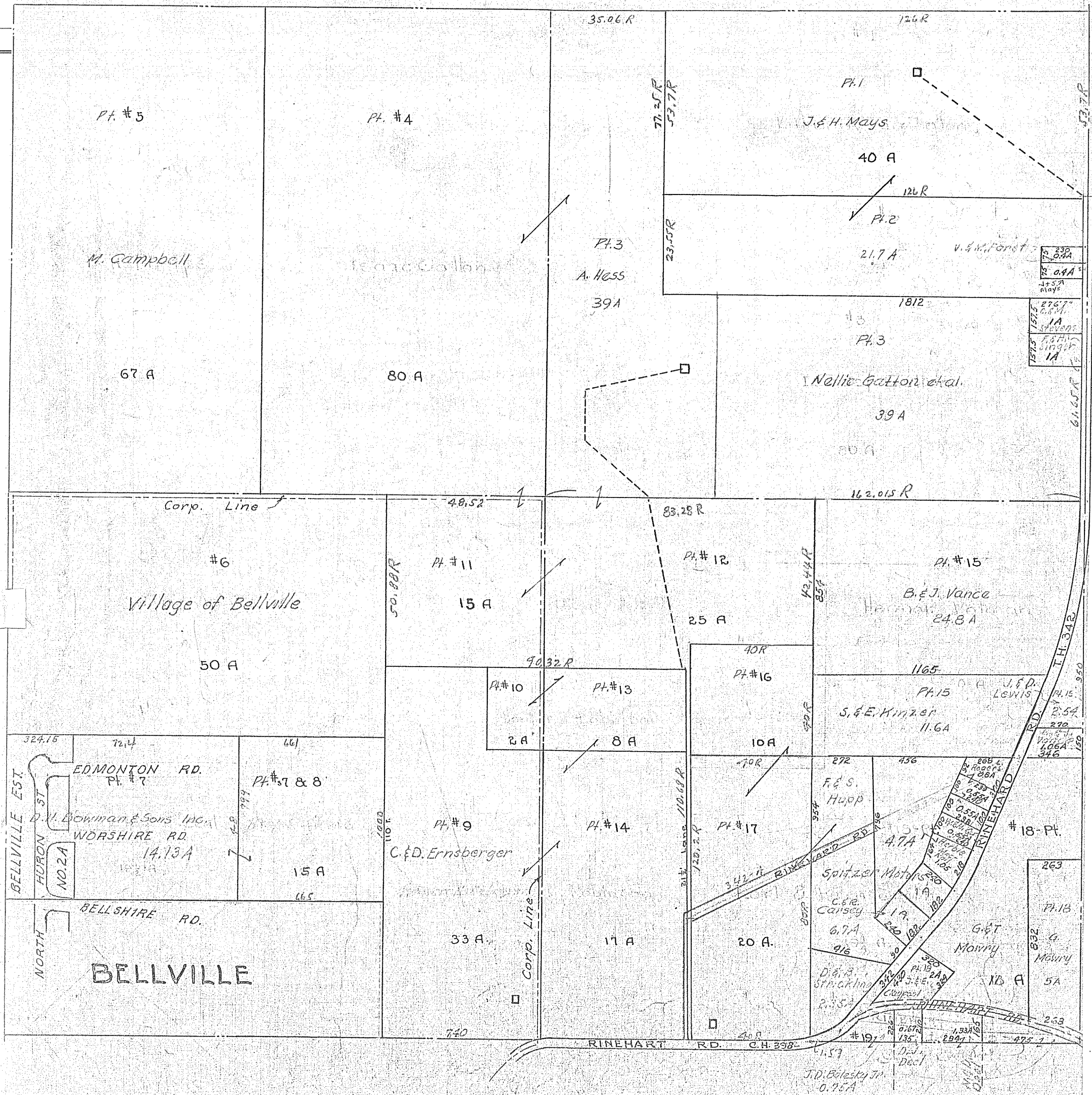


11-B



Pt. #5

Pt. #4

35.06 R

126 R

M. Campbell

J. & H. Mays

Pt. 3
A. Hess
39A

J. & H. Mays

40 A

21.7 A

v. J. Kinzer

67 A

80 A

1812

Pt. 3

Nellie Gattori et al.

39 A

Corp. Line

48.52

83.28 R

162.015 R

#6

Pt. #11

Pt. #12

Pt. #15

Village of Bellville

15 A

25 A

B. & J. Vance
24.8 A

50 A

90.32 R

40 R

1165

Pt. #10

Pt. #13

Pt. #16

Pt. #15

2 A

8 A

10 A

S. & E. Kinzer
11.6 A

324.16

72.4

66.1

BELLVILLE EST.
HURON ST.
EDMONTON RD.
Pt. #7
D. W. Bowman & Sons Inc.
WORSHIRE RD.
14.13 A

Pt. #7 & 8

Pt. #9

Pt. #14

Pt. #17

#18-Pt.

NORTH
BELLSHIRE RD.
BELLVILLE

15 A

C. & D. Ernsberger

17 A

20 A

263

Pt. 18

263

5 A

263

Corp. Line

RINEHART RD.

C.H. 358

Twp. 19-R. 18

JEFFERSON TWP.
SEC. 3

11-B