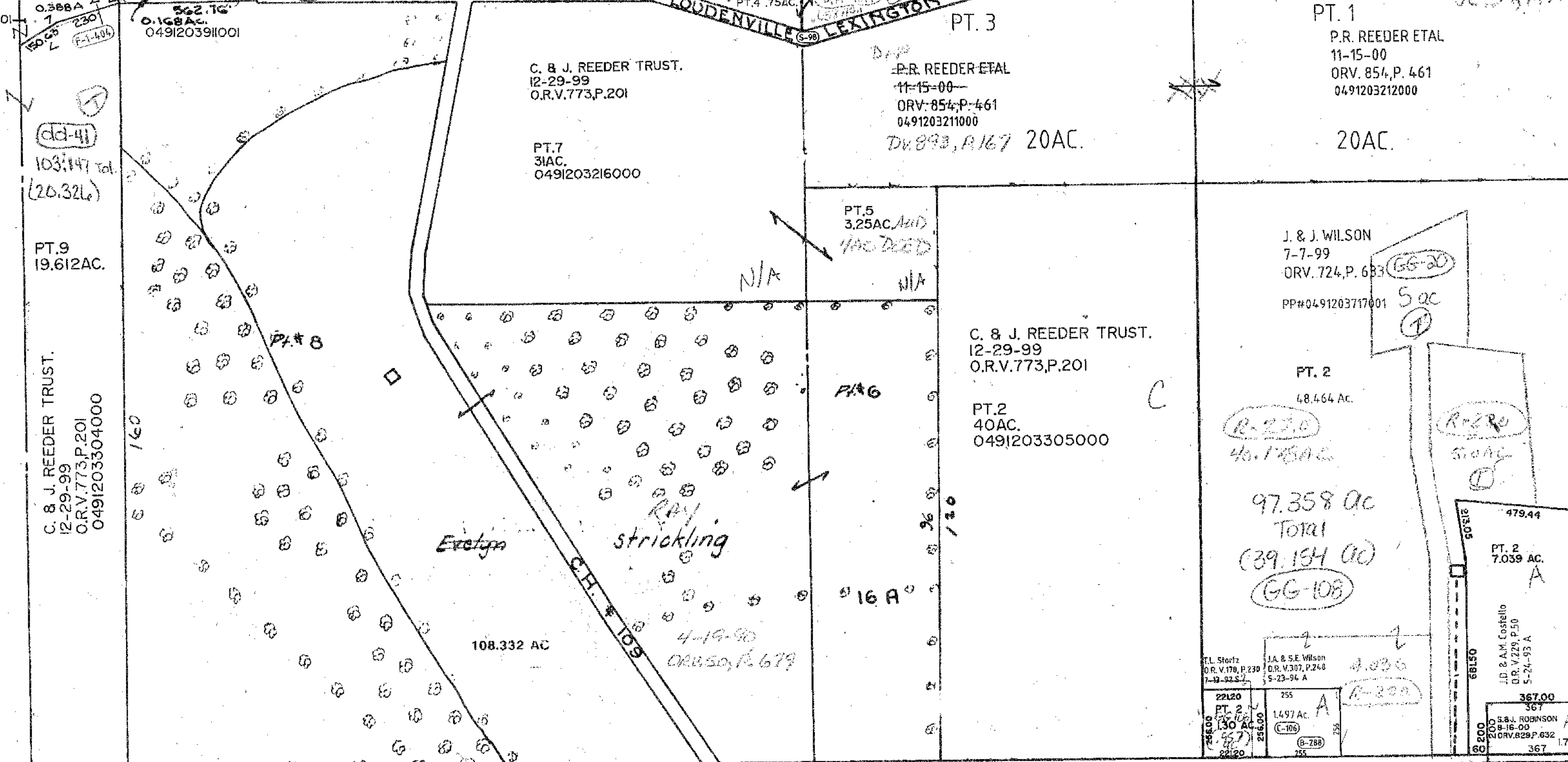


0491203304001

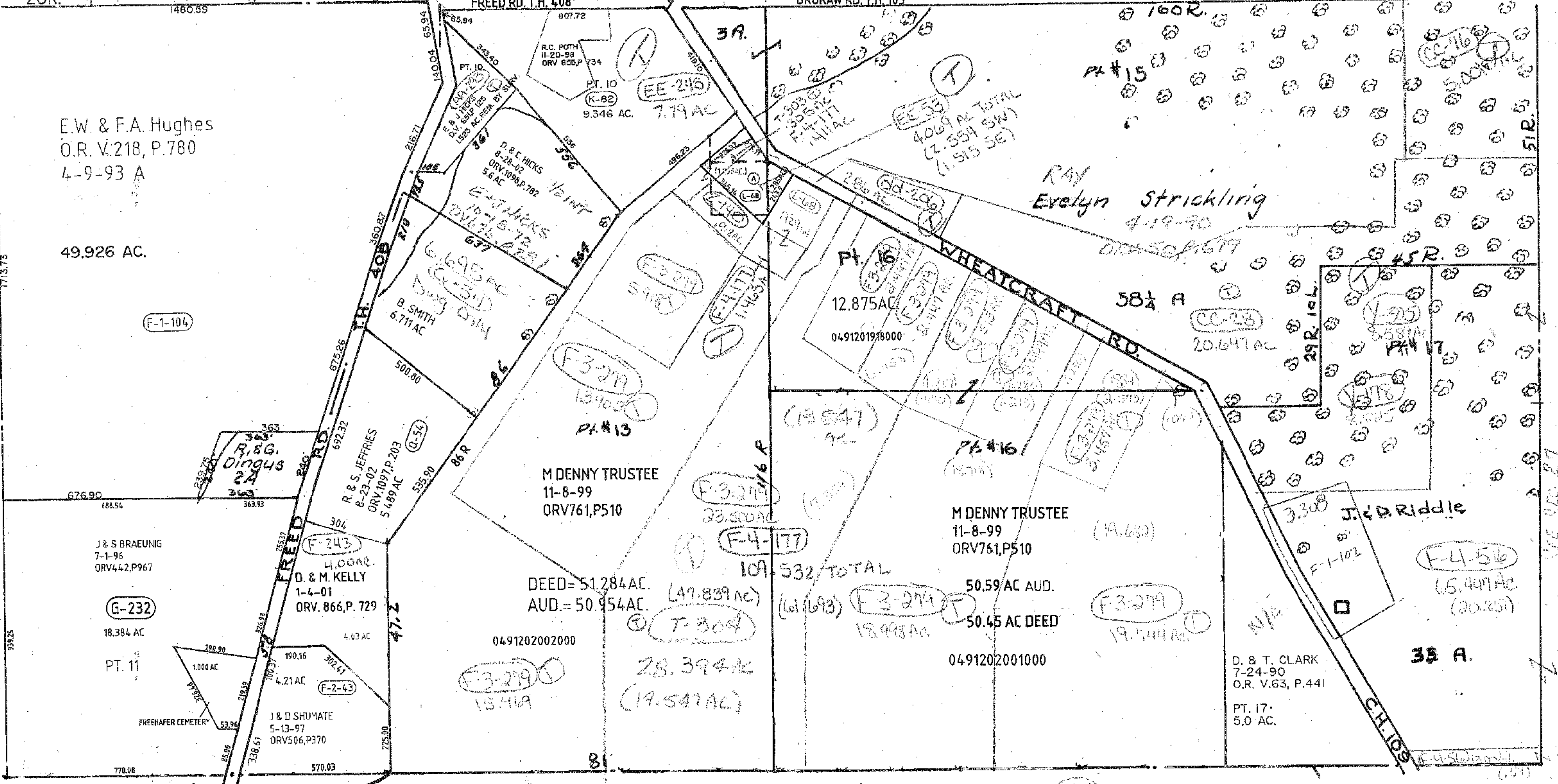
TH. # 380 HILDEBRANT VACATED 1-13-67
JE. 39, 111



TL. Stoltz O.R.V. 170, P. 230 7-12-92 S	JA. & S.E. Wilson O.R.V. 307, P. 248 5-23-96 A
22120 PT. 2 130 AC 557 2220	255 1.497 AC (C-306) (9-288) 235

4.036
A-220
479.44
PT. 2
7.039 AC
A
JD. & A.M. Costello
O.R.V. 729, P. 50
5-24-93 A
367.00
367
S.B. ROBINSON
O.R.V. 829, P. 632
2000
2000
60
17AC.
367

A.E.W. HUDDLE ETAL
6-27-01
ORV. 928, P. 692
1.581AC. TOTAL
(1.296AC.) (L-60)
(.285AC.)



Twp. 21-R.17

WORTHINGTON TWP.
SEC. 28 8-28-02