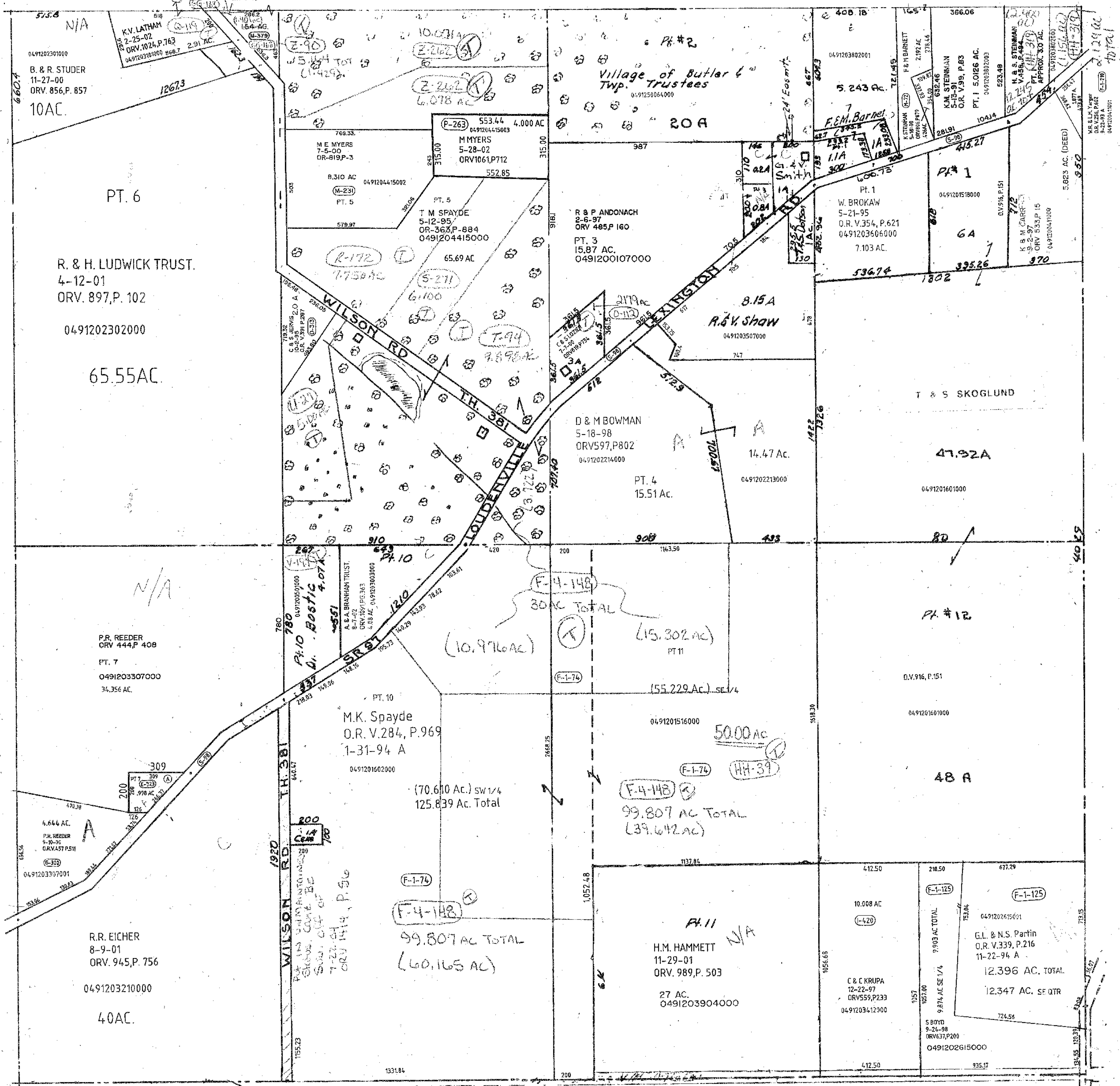


K & G ANTHONY, TRUST
1-7-99
ORV 670 P 631 0491203018000



55.8 N/A
0491202301000
B. & R. STUDER
11-27-00
ORV. 856, P. 857
10AC.

PT. 6
R. & H. LUDWICK TRUST.
4-12-01
ORV. 897, P. 102
0491202302000
65.55AC.

Ph #2
Village of Butler &
Twp. Trustees
0491250064000
20A

408.18
0491203802001
5.243 Ac.
F.E.M. Barnett
K. STEINMAN
K.M. STEINMAN
5-10-91
O.R. V.39, P.83
PT. 1. 5.0126 AC.
0491203802003
523.48
H.A.S. STEINMAN
V.35, P.84
PT. 1 (HH-39)
APPROX. 3.0 AC.
0491203802000
1129.00
Total

N/A
P.R. REEDER
ORV 444, P. 408
PT. 7
0491203307000
34.356 AC.

PT. 10
M.K. Spayde
O.R. V.284, P.969
1-31-94 A
0491201602000
(70.610 Ac.) SW 1/4
125.839 Ac. Total

F-4-148
30 AC TOTAL
(10.976 AC)
PT. 11
(15.302 AC)
155.229 AC. SE 1/4
0491201516000
50.00 AC
F-1-74
HH-39
99.807 AC TOTAL
(39.642 AC)

T & S SKOGLUND
47.92A
0491201601000
PT. #12
D.V.916, P.151
0491201601000
48 A

6.644 AC.
P.R. REEDER
9-10-76
ORV. 457, P.511
0491203307001
R.R. EICHER
8-9-01
ORV. 945, P. 756
0491203210000
40AC.

F-1-74
F-4-148
99.807 AC TOTAL
(60.165 AC)

F-1-74
HH-39
H.M. HAMMETT
11-29-01
ORV. 989, P. 503
27 AC.
0491203904000

412.50
218.50
677.29
F-1-125
F-1-125
0491202615001
G.L. & N.S. Partin
O.R. V.339, P.216
11-22-94 A
12.396 AC. TOTAL
12.347 AC. SE QTR
724.56
935.17
C & C KRUPA
12-22-97
ORV559, P.233
0491203412000
S BOYD
9-24-98
ORV637, P.200
0491202615000

Twp. 21-R.17

WORTHINGTON TWP.
SEC. 22
9-12-00

Compt. J.39, R.11 1-12-06