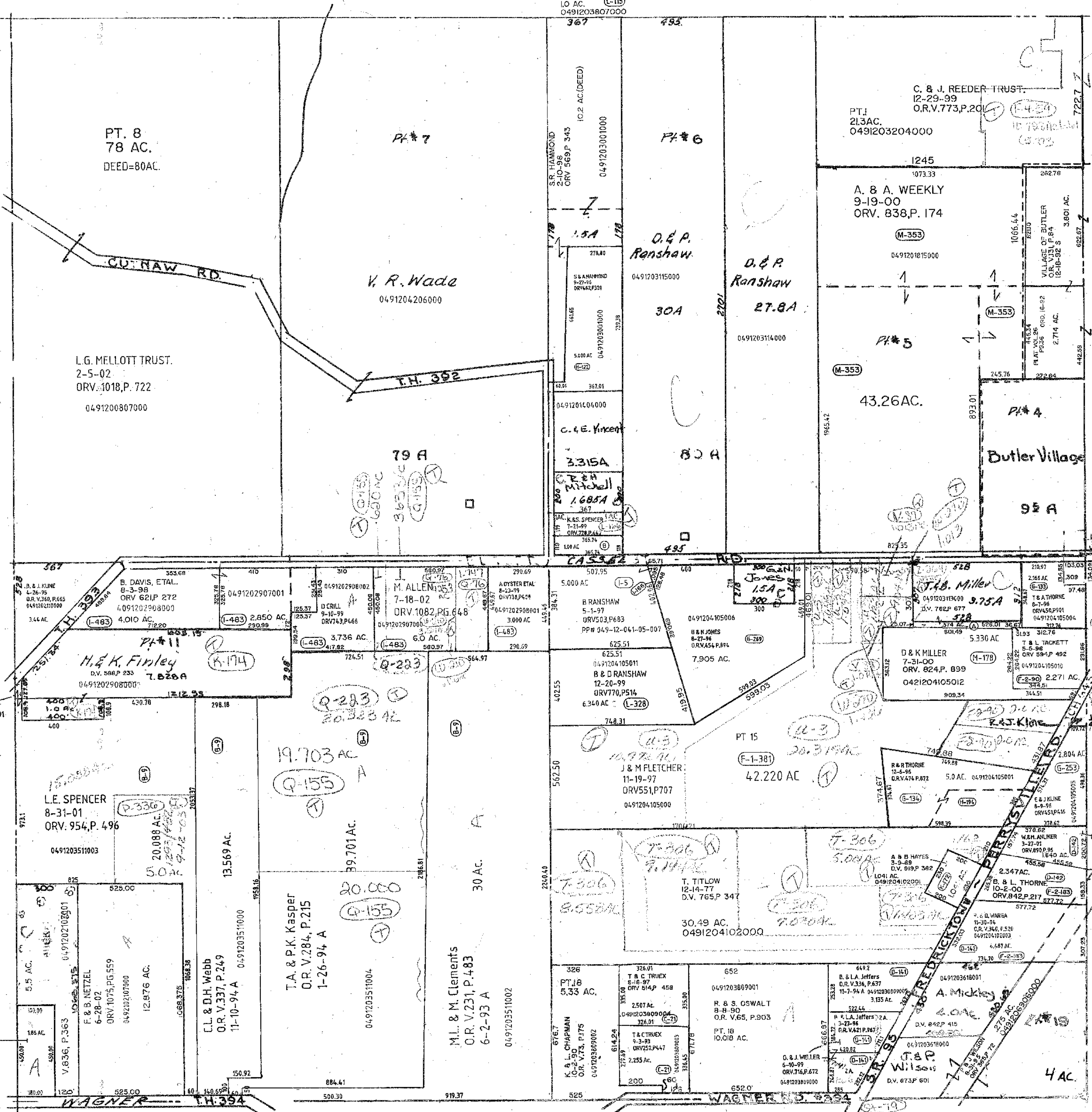


(B) TRACKER FREE-MAN
11-13-99
ORV763,P98

(L-115)
1.0 AC.
0491203807000



PT. 8
78 AC.
DEED=80AC.

L.G. MELLOTT TRUST.
2-5-02
ORV. 1018, P. 722
0491200807000

V. R. Wade
0491204206000

O. & P. Ranshaw
30A
0491203115000

O. & P. Ranshaw
27.8A
0491203114000

C. & J. REEDER TRUST.
12-29-99
ORV. 773, P. 201
PT. J
21.3AC.
0491203204000

A. & A. WEEKLY
9-19-00
ORV. 838, P. 174
1245
1073.33

A. & A. WEEKLY
9-19-00
ORV. 838, P. 174
M-353
0491201815000

43.26 AC.
M-353

Butler Village
95 A
VILLAGE OF BUTLER
12-18-92
3.801 AC.
0491204105004

H. & K. Finley
D.V. 588P 233
7.028A
0491202908000

L.E. SPENCER
8-31-01
ORV. 954, P. 496
0491203511003

F. & B. NETZEL
6-28-02
ORV. 1075, PG. 559
12.876 AC.
0491202102001

V. B. BUCKLEY
7-13-94
ORV. 458, P. 227
0491202101002

19.703 AC
Q-155
A

T.A. & P.K. Kasper
O.R. V. 284, P. 215
1-26-94 A
39.701 AC.
0491203511004

M.L. & M. Clements
O.R. V. 231, P. 483
6-2-93 A
30 AC.
0491203511002

B. RANSHAW
5-1-97
ORV. 503, P. 683
PP# 049-12-041-05-007
625.51
0491204105011
B & D RANSHAW
12-20-99
ORV. 770, P. 514
6.340 AC
L-328
758.31

J & M FLETCHER
11-19-97
ORV. 551, P. 707
0491204105000

T. TITLOW
12-14-77
D.V. 765, P. 347
30.49 AC.
0491204102000

T. & C. TRUEX
5-16-97
ORV. 514, P. 458
2507 AC.
0491203809004
326.01
C-21

T & C TRUEX
9-3-99
ORV. 252, P. 447
2.255 AC.
0491203809002

R. & S. OSWALT
B-8-90
ORV. V. 65, P. 903
PT. 1B
10.016 AC.
0491203809001

B. & L. THORNE
10-2-00
ORV. 842, P. 217
2.347 AC.
0491204105001

O. & J. WELLS
5-30-99
ORV. 716, P. 672
0491203809000

J. & P. Wilson
D.V. 673, P. 601
4 AC.
0491203809000

min Not To Scale

Twp. 21-R.17

WORTHINGTON TWP.
SEC. 19

9-17-02