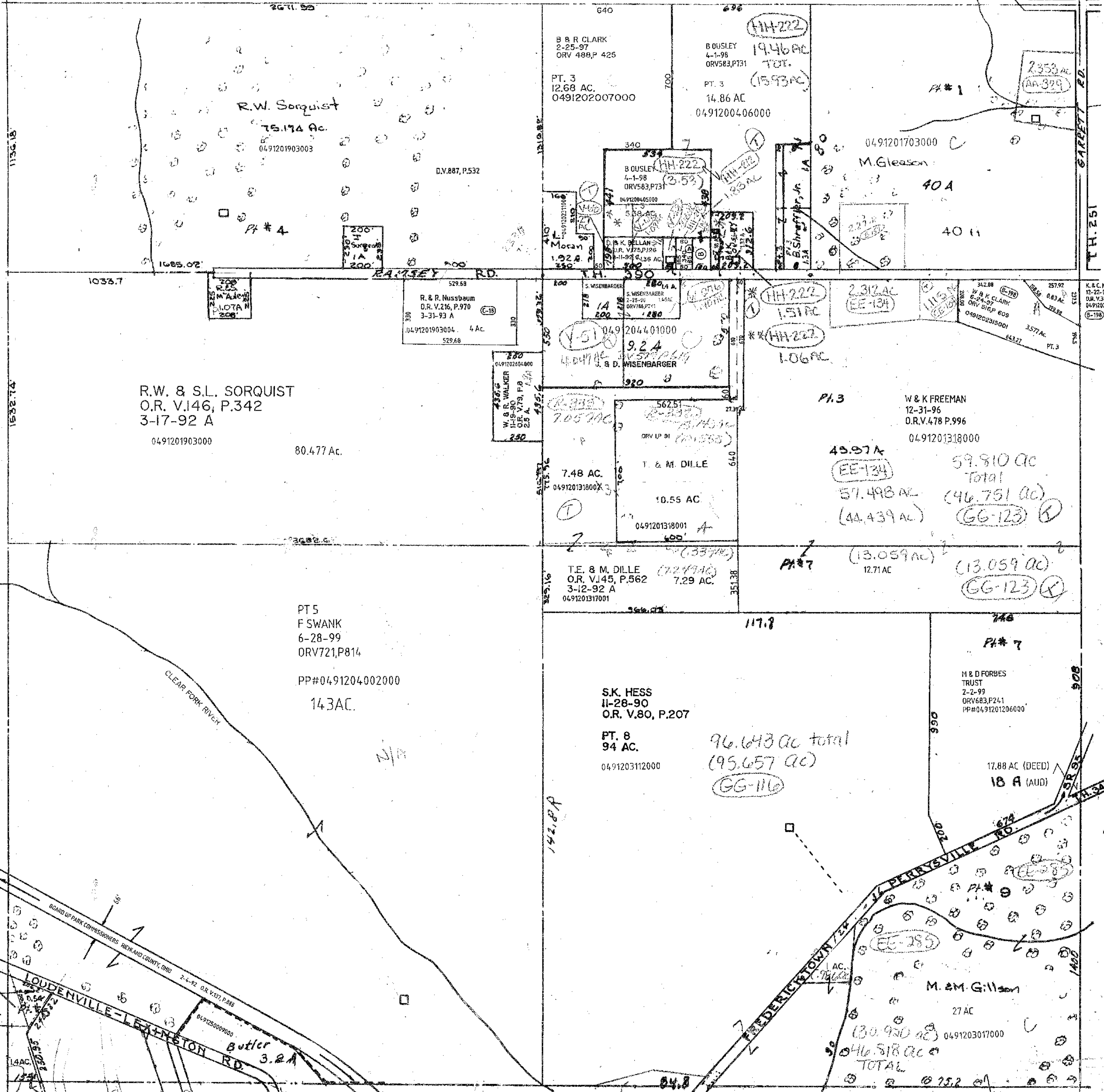


S WISENBARGER
 6-1-00
 ORV 810, P. 92
 340 AC
 0491201503000
 (J-508)

B. OUSLEY
 4-1-98
 ORV 583, P. 731
 48 AC
 0491200404000



R.W. Sorquist
 75.174 Ac.
 0491201903003

B & R CLARK
 2-25-97
 ORV 488, P. 425
 PT. 3
 12.68 AC.
 0491202007000

B OUSLEY
 4-1-98
 ORV 583, P. 731
 PT. 3
 14.86 AC
 0491200406000

M. Gleason
 40 A
 40 A
 0491201703000

R. & R. Nussbaum
 O.R. V. 216, P. 970
 3-31-93 A
 4 Ac.
 529.68
 0491201903004

R.W. & S.L. SORQUIST
 O.R. V. 146, P. 342
 3-17-92 A
 80.477 Ac.
 0491201903000

S. WISENBARGER
 2-25-90
 ORV 788, P. 711
 1.86 AC
 0491202604000

T. & M. DILLE
 10.55 AC
 0491201318001

W & K FREEMAN
 12-31-96
 O.R.V. 478 P. 996
 59.810 AC
 Total
 (46.751 AC)
 (44.439 AC)
 (13.059 AC)
 12.71 AC
 0491201318000

T.E. & M. DILLE
 O.R. V. 145, P. 562
 3-12-92 A
 7.29 AC.
 0491201317001

PT 5
 F SWANK
 6-28-99
 ORV 721, P. 814
 14.3 AC.
 PP# 0491204002000

S.K. HESS
 11-28-90
 O.R. V. 80, P. 207
 PT. 8
 94 AC.
 0491203112000

96.643 ac total
 (95.657 ac)
 (GG-116)

M & D FORBES
 TRUST
 2-2-99
 ORV 683, P. 241
 PP# 0491201206000

17.88 AC (DEED)
 18 A (AUD)

M. & M. Gillson
 27 AC
 0491203017000
 130.920 ac
 46.518 ac
 TOTAL
 75.2 ac

C. & J. REEDER TRUST
 12-29-99
 O.R.V. 773, P. 201
 0491203202000

WORTHINGTON TWP.
 SEC. 17

Twp. 21-R. 17

EE-285
 299 ac

8-30-02