

E BAKER JR  
3-8-02  
ORV 1030, P 0002  
0491231208001

321  
G.L.M.C. ROBERTSON  
1-23-01  
ORV. 870, P. 719  
1.528AC.  
0491204208002 321  
321  
R. & J. MAFFETT  
5-18-01  
ORV. 911, P. 580  
2.186AC.  
266

J.G.J. KERN  
11-10-99  
ORV 760, P 2  
0491201808000  
1.679  
1.75  
1.719

Wooster Presbytery Camp  
20A  
Pt. # 3  
0491250066000  
1347.5

R. POLINSKI  
1-4-01  
ORV. 866, P. 851  
14 AC.  
0491201009000

R. POLINSKI  
6-23-95  
O.R. V.395 P.76.

43.064A  
D. & E. Darling

58A  
0491201211000

Pt. 2  
23.5 AC.  
0491200704000

Pt. 10  
10 AC.  
0491200703000

Pt. # 11  
W. & A. Risner  
0491202004000  
10 A.

ROOKS BROTHERS  
1-12-96  
ORV 409, P 325  
0491200706000

Pt. 12  
46.44 AC.  
0491200705000

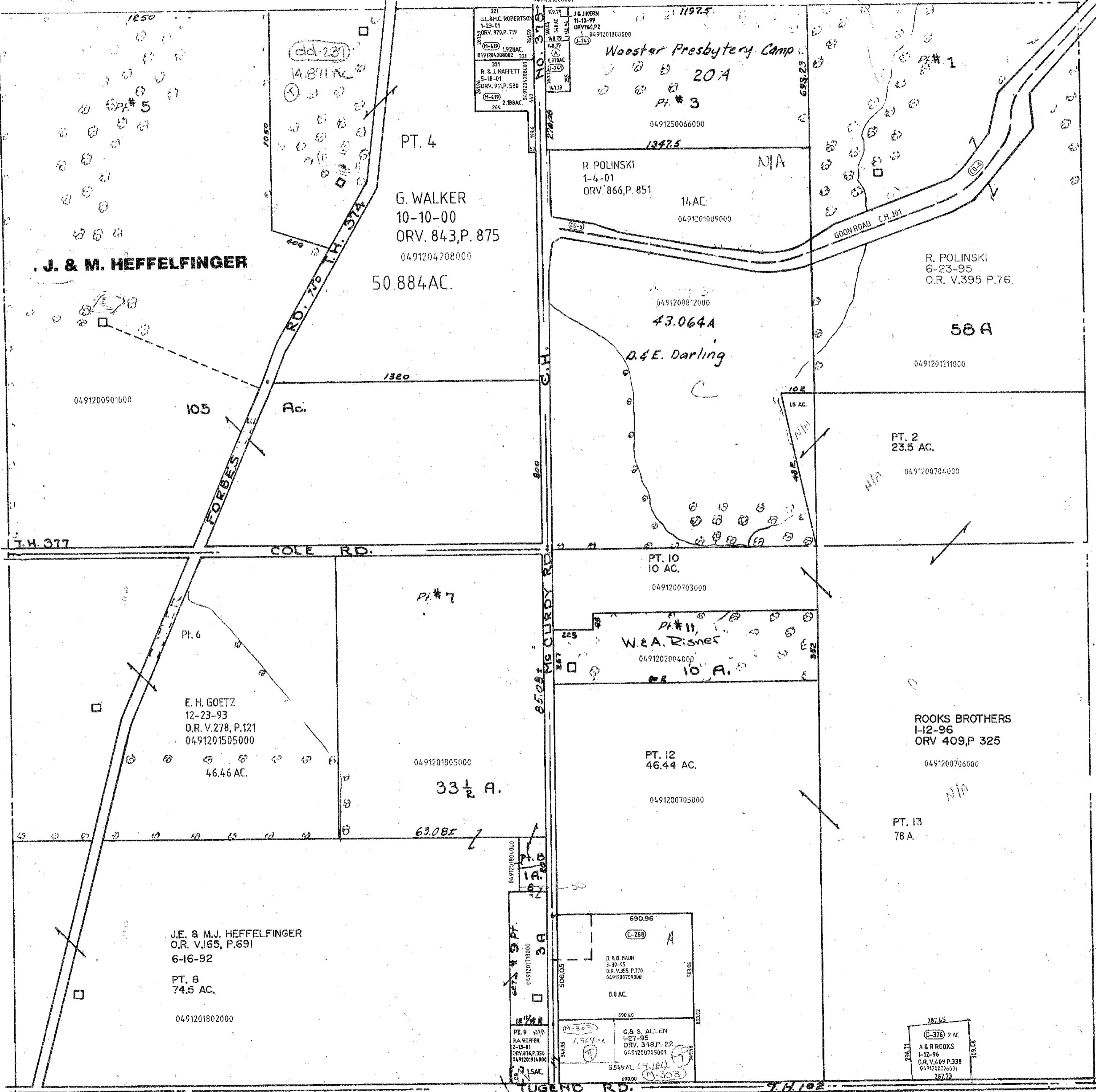
Pt. 13  
78 A.

Pt. 9  
R.A. HOFFER  
2-13-01  
ORV. 878, P. 350  
0491201914000  
1.5AC.

690.96  
D. & B. RAUN  
3-30-95  
O.R. V.355, P.770  
0491200709000  
8.0 AC.

650.40  
G. & S. ALLEN  
1-27-96  
ORV. 348, P. 22  
0491200705001  
5.545 AL.  
690.00

287.65  
A & R ROOKS  
1-12-96  
O.R. V.409 P.338  
0491200706001  
287.72



J. & M. HEFFELFINGER

G. WALKER  
10-10-00  
ORV. 843, P. 875  
0491204208000

E. H. GOETZ  
12-23-93  
O.R. V.278, P.121  
0491201505000  
46.46 AC.

J.E. & M.J. HEFFELFINGER  
O.R. V.165, P.691  
6-16-92  
Pt. 8  
74.5 AC.  
0491201802000

PART VACATION GOON ROAD  
V.662, P.678  
V.662, P.680

Twp. 21-R.17

WORTHINGTON TWP  
SEC. 12  
8-12-00