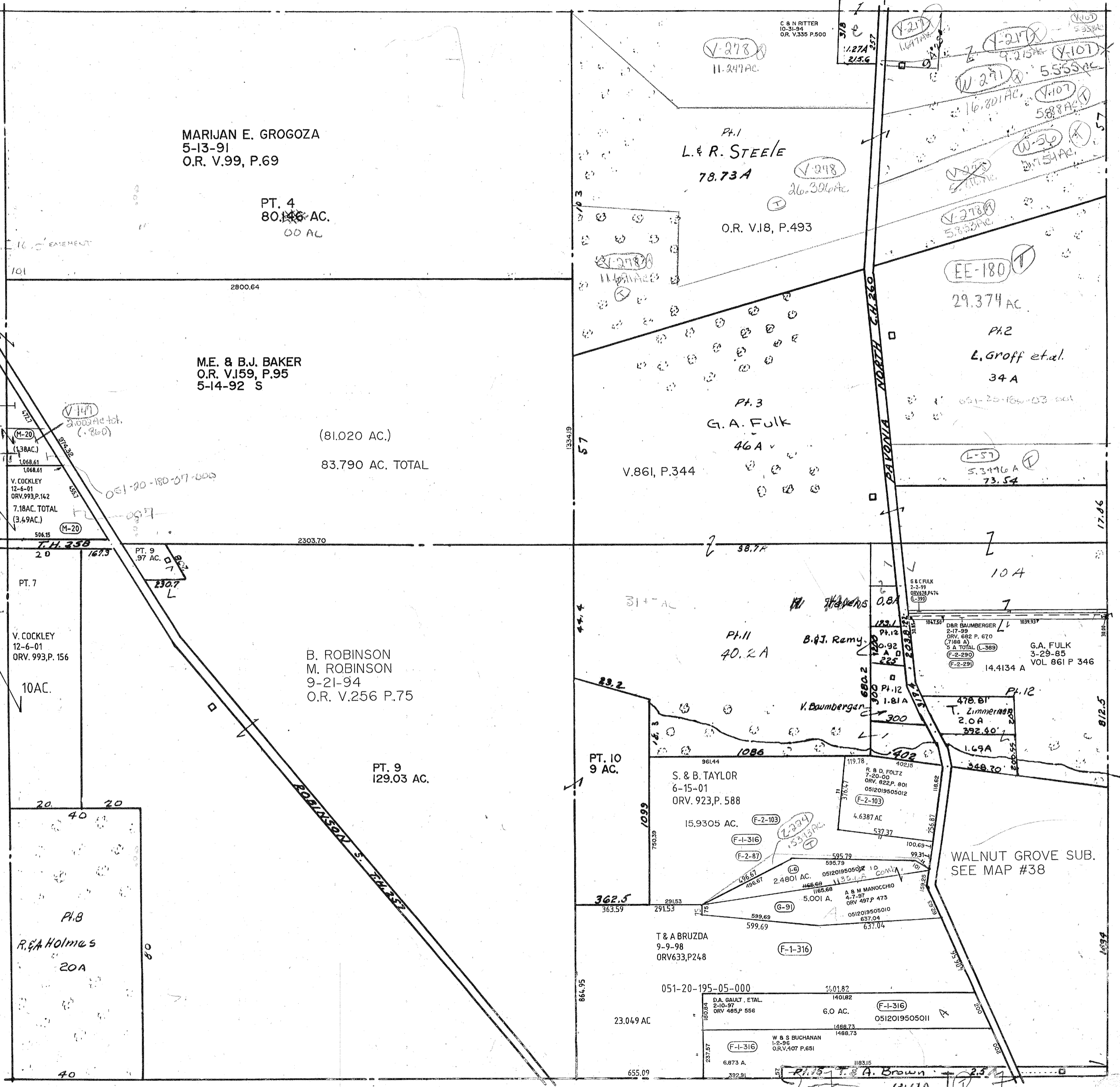


* (V-211) Replaces two North parcels of (V-101)



MARIJAN E. GROGOZA
5-13-91
O.R. V.99, P.69

PT. 4
80.146 AC.
00 AC

M.E. & B.J. BAKER
O.R. V.159, P.95
5-14-92 S

(81.020 AC.)
83.790 AC. TOTAL

B. ROBINSON
M. ROBINSON
9-21-94
O.R. V.256 P.75

PT. 9
129.03 AC.

PH.1
L & R. STEELE
78.73 A

O.R. V.18, P.493

PH.3
G.A. Fulk
46 A

V.861, P.344

PH.11
40.2 A

B. & J. Remy

PT. 10
9 AC.

S. & B. TAYLOR
6-15-01
ORV. 923, P. 588

15.9305 AC.

WALNUT GROVE SUB.
SEE MAP #38

T & A BRUZDA
9-9-98
ORV633, P248

23.049 AC

D.A. GAULT, ETAL.
2-10-97
ORV 485, P 556

6.0 AC.

W & S BUCHANAN
1-2-96
O.R.V.407 P.651

6.873 A.

Twp. 24-R.17

AA-195
9.363 A total
(1575)
See Weller (3)

WELLER TWP. SEC. 30

SURVEY 12-7-01