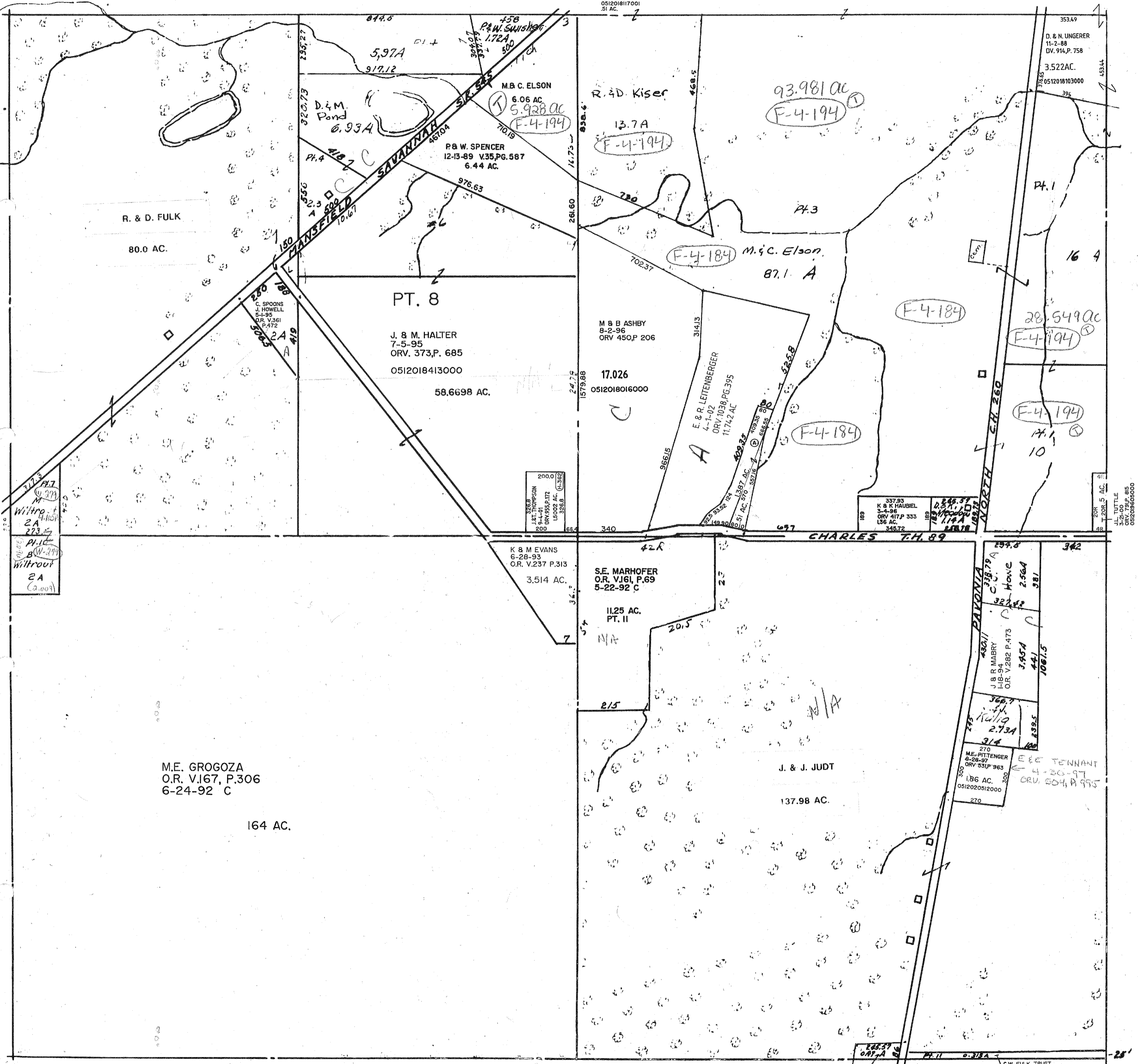


A J & J EVANS  
10-14-98  
ORV 642 P. 950  
0512020304001  
1387 AC.  
051201817001  
51 AC.



R. & D. FULK

80.0 AC.

PT. 8

J. & M. HALTER  
7-5-95  
ORV. 373, P. 685  
0512018413000

58.6698 AC.

R. & D. Kiser  
13.7A  
F-4-194

93.981 AC  
F-4-194

M. & C. Elson  
87.1 A  
F-4-184

M & B ASHBY  
8-2-96  
ORV 450, P. 206

17.026  
0512018016000

E. & R. LEITENBERGER  
4-1-02  
ORV. 1038, P. 395  
11.742 AC

F-4-184

28.549 AC  
F-4-194

F-4-194  
14.1

K & M EVANS  
6-28-93  
O.R. V.237 P.313  
3.514 AC.

S.E. MARHOFER  
O.R. V.161, P.69  
5-22-92 C

11.25 AC.  
PT. II

J. & J. JUDT

137.98 AC.

M.E. GROGOZA  
O.R. V.167, P.306  
6-24-92 C

164 AC.

ME. PITTINGER  
5-28-97  
ORV 531 P. 963  
186 AC.  
0512020512000

EEB TENNANT  
4-30-97  
ORV. 504, P. 995

PAVONIA NORTH CH. 260

J. & R. MABRY  
1-18-94  
OR. V.282 P.473

ME. PITTINGER  
5-28-97  
ORV 531 P. 963  
186 AC.  
0512020512000

ME. PITTINGER  
5-28-97  
ORV 531 P. 963  
186 AC.  
0512020512000

ME. PITTINGER  
5-28-97  
ORV 531 P. 963  
186 AC.  
0512020512000

ME. PITTINGER  
5-28-97  
ORV 531 P. 963  
186 AC.  
0512020512000

ME. PITTINGER  
5-28-97  
ORV 531 P. 963  
186 AC.  
0512020512000

ME. PITTINGER  
5-28-97  
ORV 531 P. 963  
186 AC.  
0512020512000

ME. PITTINGER  
5-28-97  
ORV 531 P. 963  
186 AC.  
0512020512000

ME. PITTINGER  
5-28-97  
ORV 531 P. 963  
186 AC.  
0512020512000

ME. PITTINGER  
5-28-97  
ORV 531 P. 963  
186 AC.  
0512020512000

Twp. 24 - R. 17

WELLER TWP SEC. 19

C.W. FULK, TRUST  
11-4-98  
ORV 650 P. 66  
315 AC.  
0512018316000

7-15-00

G.N. Ritter

J.L. TUTTLE  
3-21-00  
ORV 208.5 AC.  
051201806000

D. & N. UNGERER  
11-2-88  
OV. 914, P. 758  
3.522 AC.  
0512018103000

PT. 1

16.4

28.549 AC  
F-4-194

F-4-194  
14.1

208.5 AC

342

257.8

327.42

360.7

314

270

300

270

270

270

270