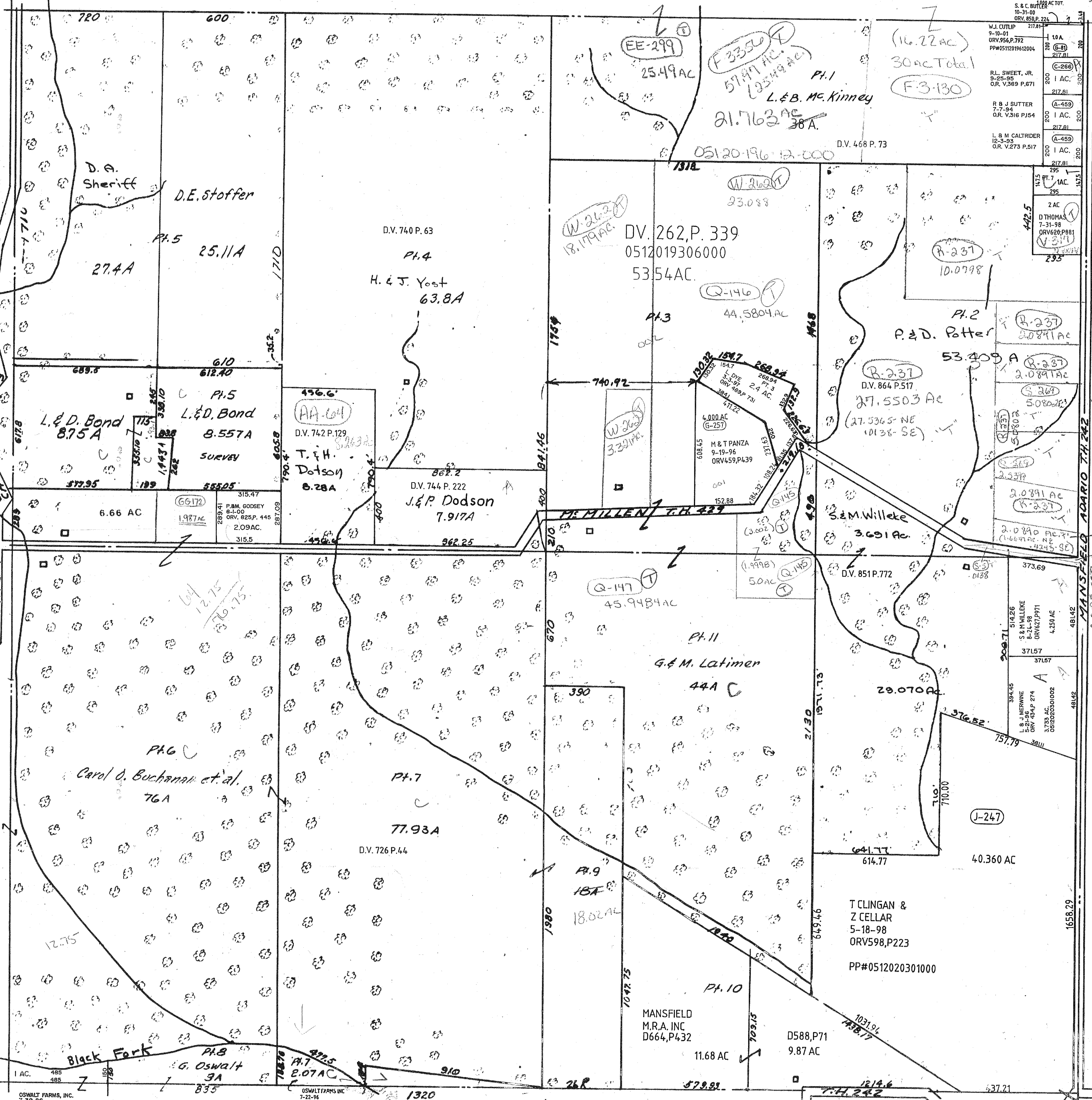


W.J. CUTLIP 9-10-01 ORV.956.P.792 PP#0512019612004	277.81 10A 217.81
R.L. SWEET, JR. 9-25-95 OR. V.389 P.671	(C-266) 1 AC. 217.81
R & J SUTTER 7-7-94 OR. V.316 PJ54	(A-459) 1 AC. 217.81
L & M CALTRIDER 12-3-95 OR. V.273 P.517	(A-459) 1 AC. 217.81
	295 1 AC. 295
	2 AC D THOMAS 7-31-98 ORV620.P881 V.317



OSWALT FARMS, INC.  
7-30-96  
ORV. 449.P. 217

OSWALT FARMS INC  
7-22-96  
ORV447.P495

TWP. 22- R. 18

WELLER TWP. SEC. 12

9-23-02