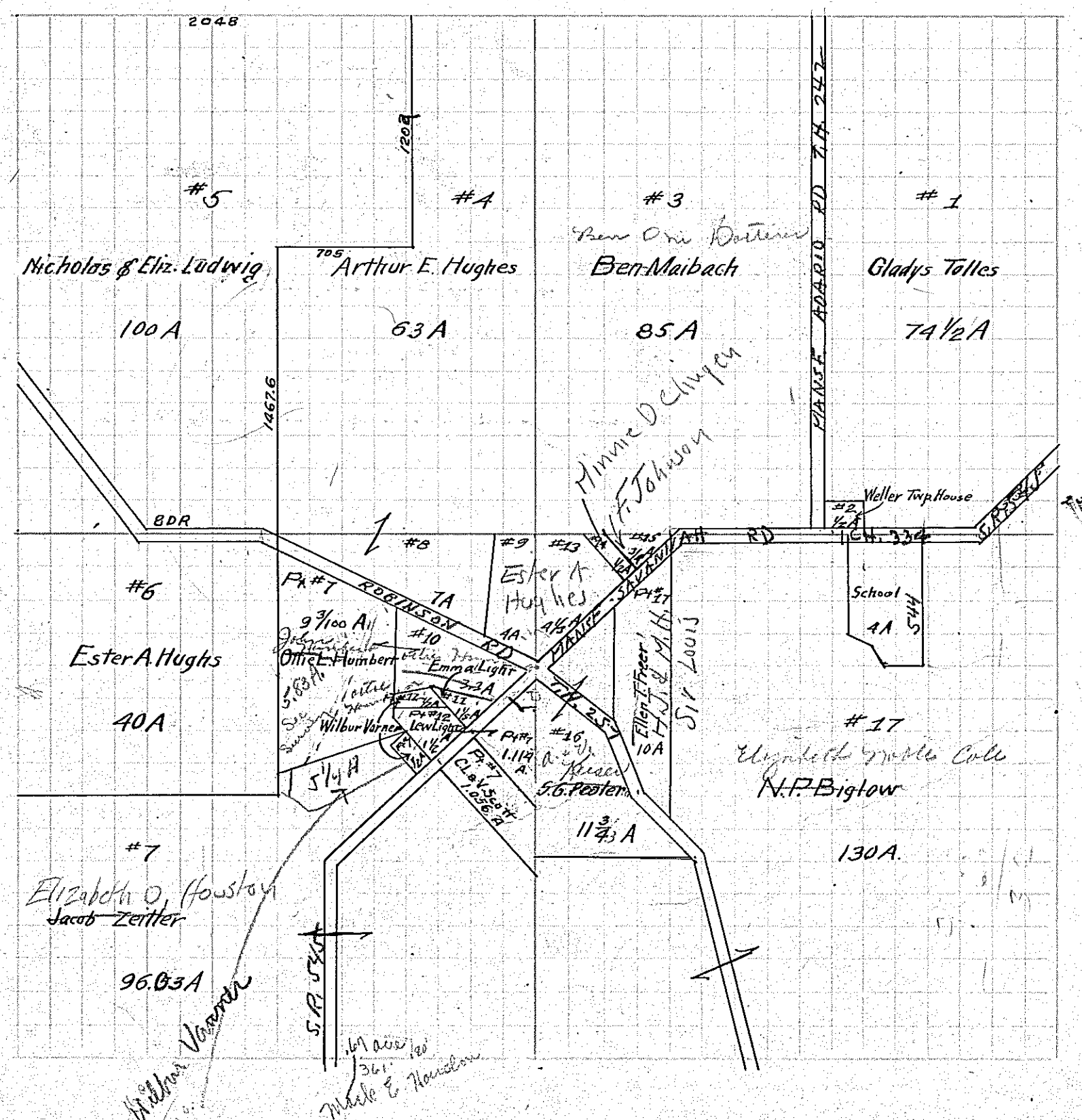


IN WHOSE NAME PROPERTY ASSESSED



- ✓ Mahon, John ^{Donald Sherman} ~~Barkswalter~~
- ✓ ~~Stevenson, Ida M.~~ ^{Paul O. & Anna M. Bushman}
- ✓ Light, Elmore
- ✓ Balliett, Abraham L.
- ✓ ~~Stevenson, Samuel~~ ^{REINER PETER & EVA}
- ✓ Martin, W.B.
- ✓ ~~Stevenson, Samuel~~ ^{Downs, John C. et al.}
- ✓ Ferguson, Otto, C. ^{Baker, Jay F.}



- ✓ Tolles, Gladys ^{District Land Office}
- ✓ Maibach, Ben ^{Barkswalter}
- ✓ Hughes, Arthur E.
- ✓ Ludwig, Nicholas & Elizabeth
- ✓ Hughes, Esther A. ^{Houston Elizabeth O.}
- ✓ Zetter, Jacob
- ✓ Humbert, Otis L.
- ✓ Scott, Chas. L. & Vera
- ✓ Scott, Chas. & Vera
- ✓ Light, Lew
- ✓ Varner, Welber F.
- ✓ Hughes, Arthur E.
- ✓ Hughes, Esther A.
- ✓ Humbert, Otis L.
- ✓ Light, Emma
- ✓ Light, Lew
- ✓ Varner, Welber F.
- ✓ Hughes, Esther A.
- ✓ Clingen, Minnie D. ^{Johnson Frederick}
- ✓ Freer, Ellen C.
- ✓ ~~Freer, Ellen C.~~ ^{Meiser Anton & Velma}
- ✓ ~~Freer, Ellen C.~~ ^{Paulo Sherman G.}
- ✓ ~~Freer, Ellen C.~~ ^{Sir Lewis Harry J. & Mary H.}
- ✓ Biglow, N.P. ^{Elizabeth Mable Cole}