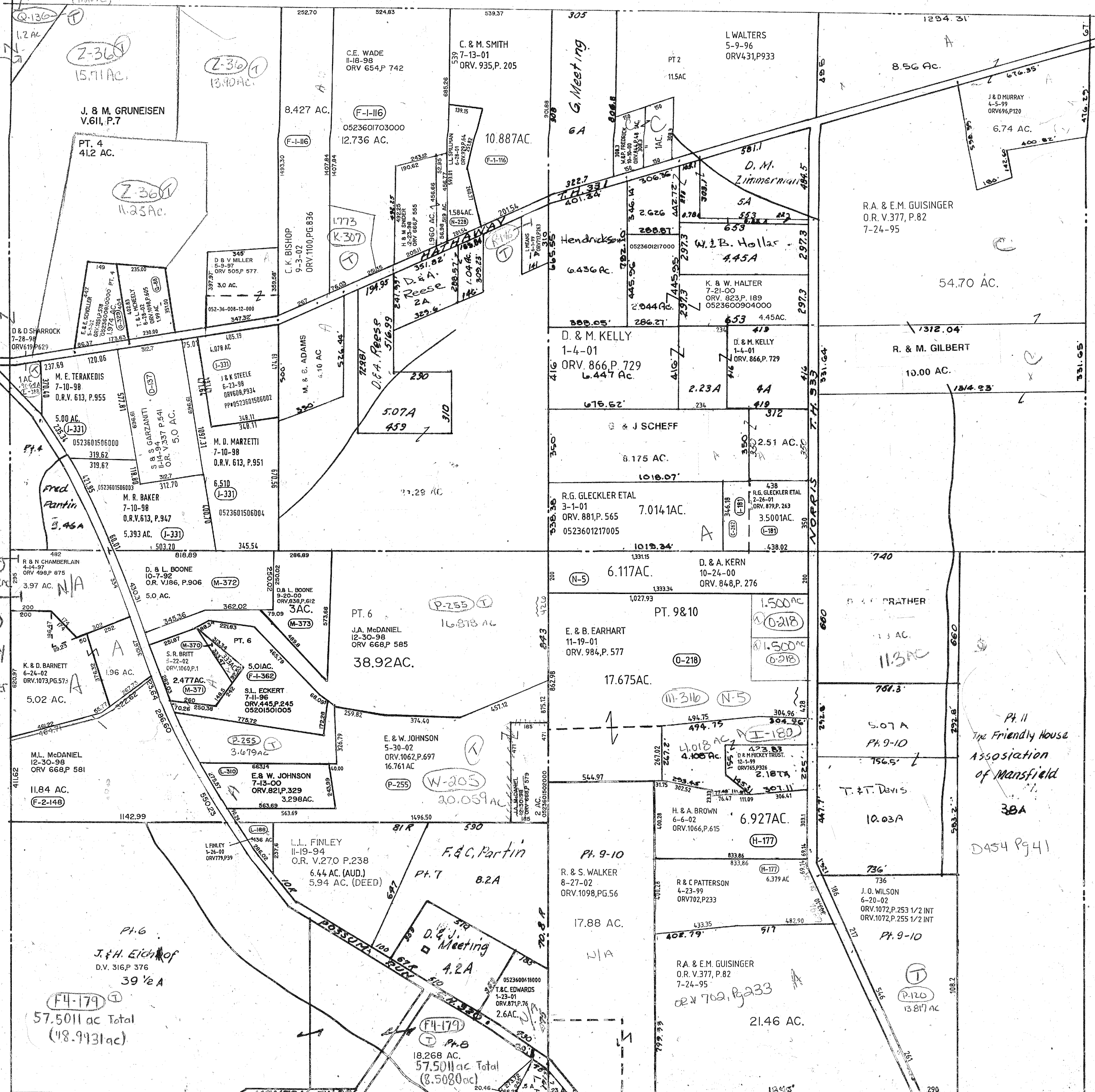


F-3 217
17.11 AC. (1.80 AC)
Q-136
1.2 AC
V-215
10.64 Total
(1.20)

See
Wash.
Sec. 35

ST. 7-17-13
Conflicting
info on
original 4.2
and .23 ac
split out
(parallel 174)
will need
new survey
before it
can
transfer



F4-179
57.5011 ac Total
(18.9431 ac)

F4-179
18.268 AC.
57.5011 ac Total
(8.5080 ac)

WASHINGTON TWP.
SEC. 36
9-4-03

W & P JASINSKI
9-23-98
ORV 636.P.942
232 AC.
0523600515001
(C-3)

TWP. 20-R-13

Ph. 11
The Friendly House
Association
of Mansfield
38A
D454 Pg. 41