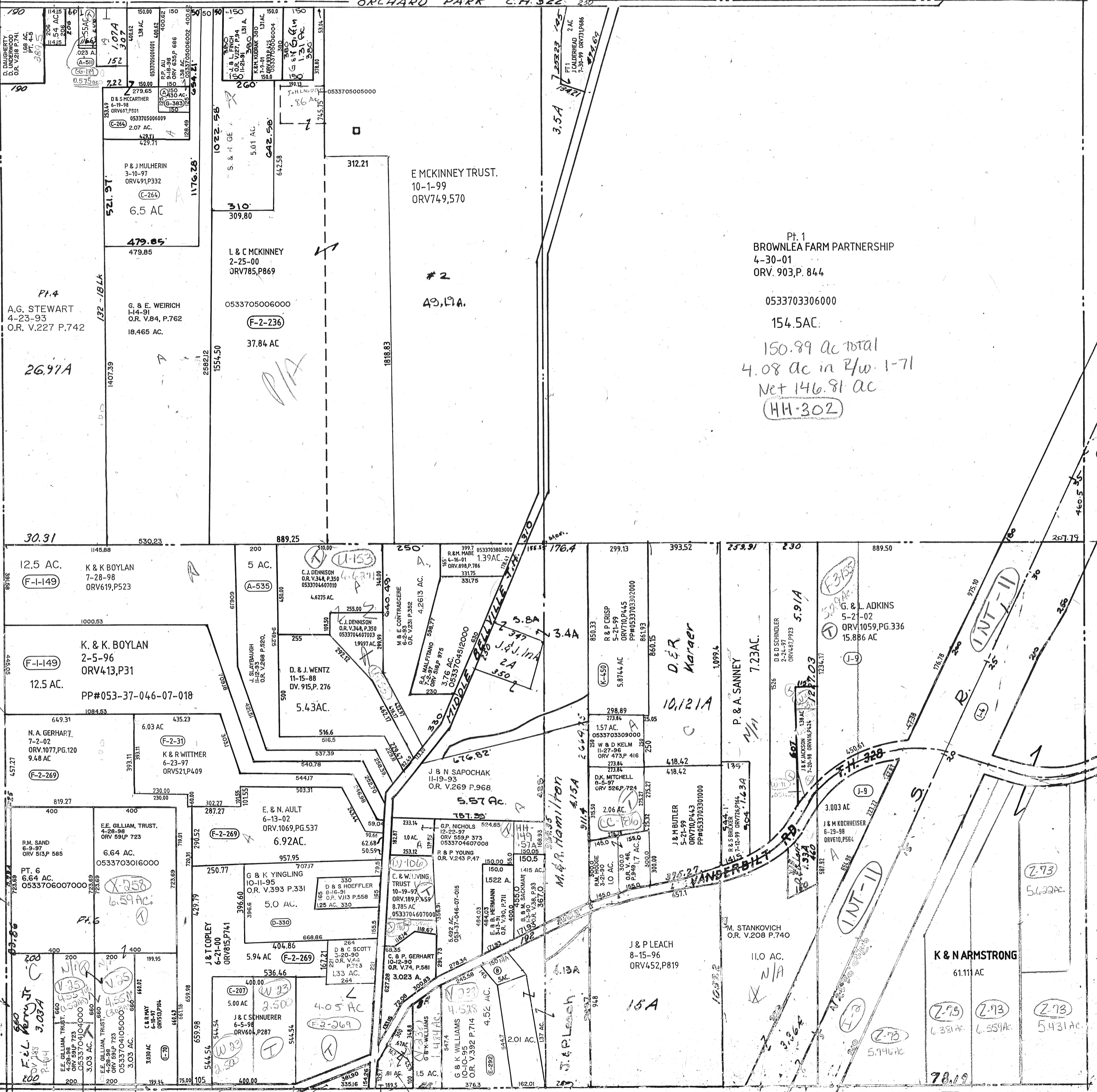


M&M STEWART
5-7-01
ORV 907P.149
0533706510000
B&K WIRK
11-27-91
ORV 987P.521
A STEWART &
R FLOYD
8-24-99
ORV 738.P.448
PP#0533706510000
R.P. AU
9-18-98
ORV 535.P.684
430 AC.
0533705006010

ORCHARD PARK C.H. 322 230



Pt. 1
BROWNLEA FARM PARTNERSHIP
4-30-01
ORV. 903,P. 844

0533703306000
154.5AC.

150.89 ac total
4.08 ac in R/w. 1-71
Net 146.81 ac
HH-302

E MCKINNEY TRUST.
10-1-99
ORV749,570

L & C MCKINNEY
2-25-00
ORV785,P869

G. & E. WEIRICH
1-14-91
O.R. V.84, P.762
18.465 AC.

Pt. 4
A.G. STEWART
4-23-93
O.R. V.227 P.742

12.5 AC.
(F-1-149)
K & K BOYLAN
7-28-98
ORV619,P523

12.5 AC.
(F-1-149)
K. & K. BOYLAN
2-5-96
ORV413,P31
PP#053-37-046-07-018

9.48 AC
(F-2-269)
N. A. GERHART,
7-2-02
ORV.1077,P.120

6.64 AC.
(F-2-31)
E.E. GILLIAM, TRUST.
4-28-98
ORV 591P.723

6.64 AC.
(F-2-269)
R.M. SAND
6-9-97
ORV 513,P.585

5 AC.
(A-535)
C. J. DENNISON
O.R. V.348, P.350
0533704607010

5.43 AC.
(F-2-269)
D. & J. WENTZ
11-15-88
DV. 915,P. 276

6.92 AC.
(F-2-269)
E. & N. AULT
6-13-02
ORV.1069,P.537

5.0 AC.
(D-330)
G & K YINGLING
10-11-95
O.R. V.393 P.331

5.0 AC.
(C-207)
J & T COPELY
6-21-00
ORV815,P.741

4.2613 AC.
(U-153)
M. B. E. CONTRASCERE
6-2-93
O.R. V.231 P.352

5.57 AC.
(F-2-269)
J & N SAPOCHAK
11-19-93
O.R. V.269 P.968

3.023 AC.
(F-2-269)
C. B. P. GERHART
O.R. V.74, P.581

4.52 AC.
(E-292)
G & K WILLIAMS
10-10-95
O.R. V.392 P.714

4.52 AC.
(E-292)
G & K WILLIAMS
10-10-95
O.R. V.392 P.714

1.39 AC.
(U-153)
R. & M. MABE
4-16-01
ORV.898,P.786

5.8744 AC
(K-450)
R & P CRISP
5-21-99
ORV710,P.445

2.06 AC.
(CC-780)
D.K. MITCHELL
6-5-97
ORV 526,P.724

1.522 AC.
(D)
B. M. SACKMAN
1-5-90
O.R. V.30, P.711

2.01 AC.
(E-292)
J. & P. LEACH
8-15-96
ORV452,P.819

5.8744 AC
(K-450)
R & P CRISP
5-21-99
ORV710,P.445

10.121A
(D.E.R. Karger)

3.003 AC
(J-9)
J & M KOCHHEISER
6-29-98
ORV610,P.564

11.0 AC.
(N/A)
M. STANKOVICH
O.R. V.208 P.740

11.0 AC.
(N/A)
M. STANKOVICH
O.R. V.208 P.740

5.91A
(F-315)
G. & L. ADKINS
5-21-02
ORV.1059,P.336

7.23AC.
(P. & A. SANNEY)

3.003 AC
(J-9)
J & M KOCHHEISER
6-29-98
ORV610,P.564

11.0 AC.
(N/A)
M. STANKOVICH
O.R. V.208 P.740

11.0 AC.
(N/A)
M. STANKOVICH
O.R. V.208 P.740

15.886 AC
(L-9)
G. & L. ADKINS
5-21-02
ORV.1059,P.336

7.23AC.
(P. & A. SANNEY)

3.003 AC
(J-9)
J & M KOCHHEISER
6-29-98
ORV610,P.564

11.0 AC.
(N/A)
M. STANKOVICH
O.R. V.208 P.740

11.0 AC.
(N/A)
M. STANKOVICH
O.R. V.208 P.740

15.886 AC
(L-9)
G. & L. ADKINS
5-21-02
ORV.1059,P.336

7.23AC.
(P. & A. SANNEY)

3.003 AC
(J-9)
J & M KOCHHEISER
6-29-98
ORV610,P.564

11.0 AC.
(N/A)
M. STANKOVICH
O.R. V.208 P.740

11.0 AC.
(N/A)
M. STANKOVICH
O.R. V.208 P.740

F.L. Perry Jr.
3.03A

E.E. Gilliam Trust
3.03 AC

J & C Sehnerer
4.05 AC

D Ray Etal
6-28-99

J & L Viars
10-30-00

J & P Leach
8-15-96

K & N Armstrong
61.11 AC

Washington Twp.
Sec. 20

Twp. 20-R.18
Sec. 20