

J & A ARNHOLT TRUST.
10-4-99
ORV750,P185

HANLEY, C.H. 139

SEE BOOK 7
MAP 89

SEE BOOK 7
MAP 91

SEE BOOK 7
MAP 92

SEE BOOK 7
MAP 91

V & K MACTAVISH
TRUST.
5-26-99
ORV710,P231
PP#0533705107000

D.W. SMITH, ETAL.
2-4-98
ORV 567,P 817
1 AC.
0533706215000

B P YOHA
5-18-98
ORV598,P71
.73 AC

J & A CARTEE
6-26-02
ORV1074,P517

K OFSAESS
5-6
ORV1033,P718

K CALHOON
7-19-92
ORV1083,P83

K COFFMAN
9-30-99 523 AC
ORV748,P511-513

J & K ZEIGLER
523 AC

F & L WALLS
3-10-94 523 AC
ORV292,P122

E SCHMIDT
11-19-99 523 AC
ORV763,P81

J.L. CRAWFORD
9-3-02 523 AC
ORV1101,P215

A & M BLACK
9-24-91 523 AC
ORV118,P491
ORV150,P809

C STURGIS
523 AC

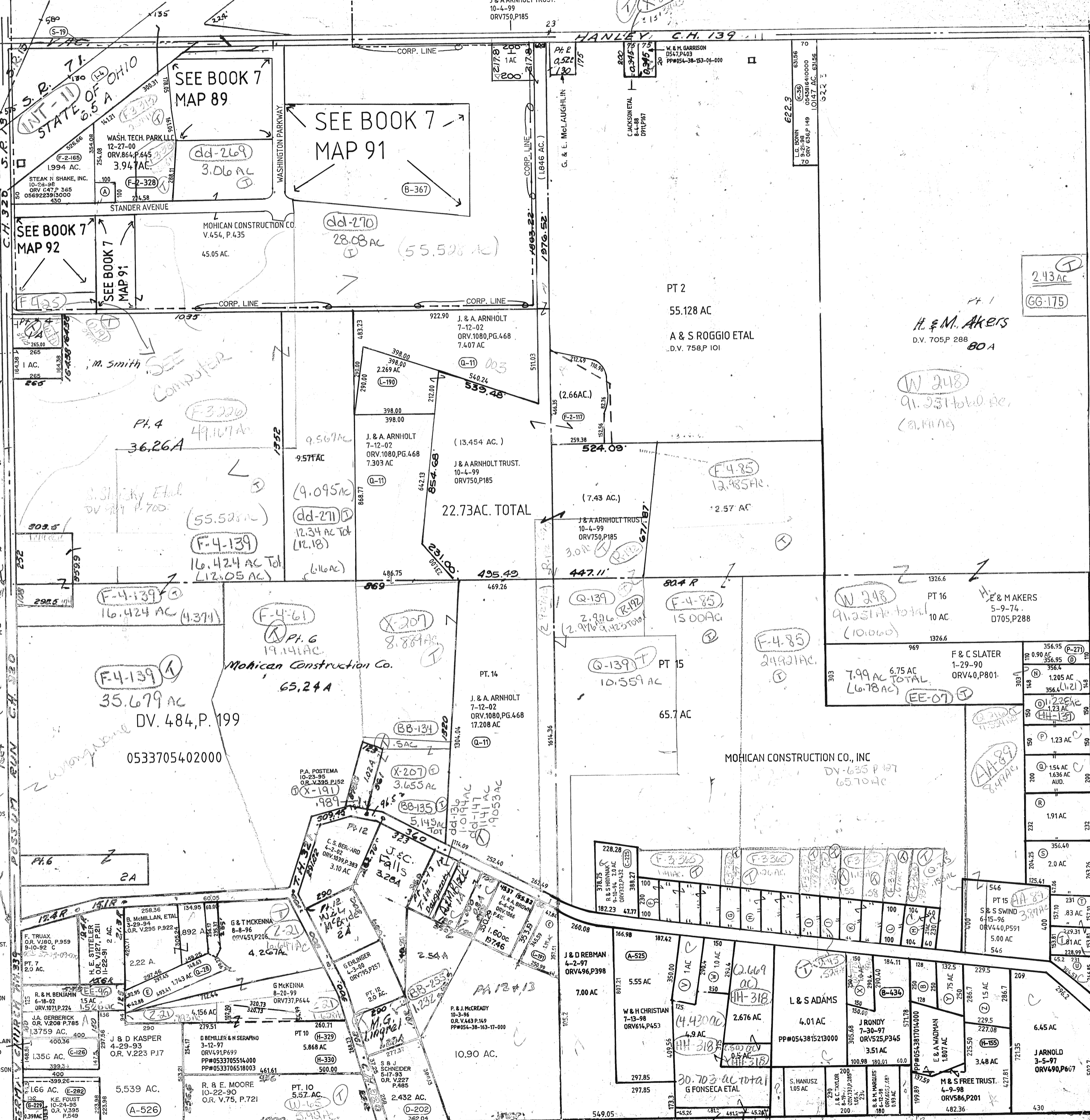
M CARKER
3-16-01 545 AC
ORV886,P178

F & C SLATER
1-29-90
ORV40,P801

P & P BEAVER
9-10-98
ORV633,P473

L & M BARR
6-21-78
ORV774,P239

D & P APOSTOLOS
4-20-79
ORV788,P455



2.43 AC
GG-175

H. & M. Akers
D.V. 705,P 288
80 A

W 248
91.251 total ac.
(8.111 AC)

W 248
91.251 total
(10.060)

PT 15
10.559 AC
65.7 AC

PT 16
10 AC
H. & MAKERS
5-9-74
D705,P288

F & C SLATER
1-29-90
ORV40,P801
356.95
356.4
1.205 AC
356.4 (1.21)

7.99 AC
6.75 AC
TOTAL
16.78 AC
EE-07

PT 15
546
S & S SWIND
6-15-96
ORV440,P591
5.00 AC
546

PT 10
5.57 AC
5.868 AC
500.00

R. & E. MOORE
10-22-90
O.R. V.75, P.721
2.432 AC.

PT 10
5.57 AC
5.868 AC
500.00

T - 20, R - 18

9-4-02

WASHINGTON TWP.
SECTION 15