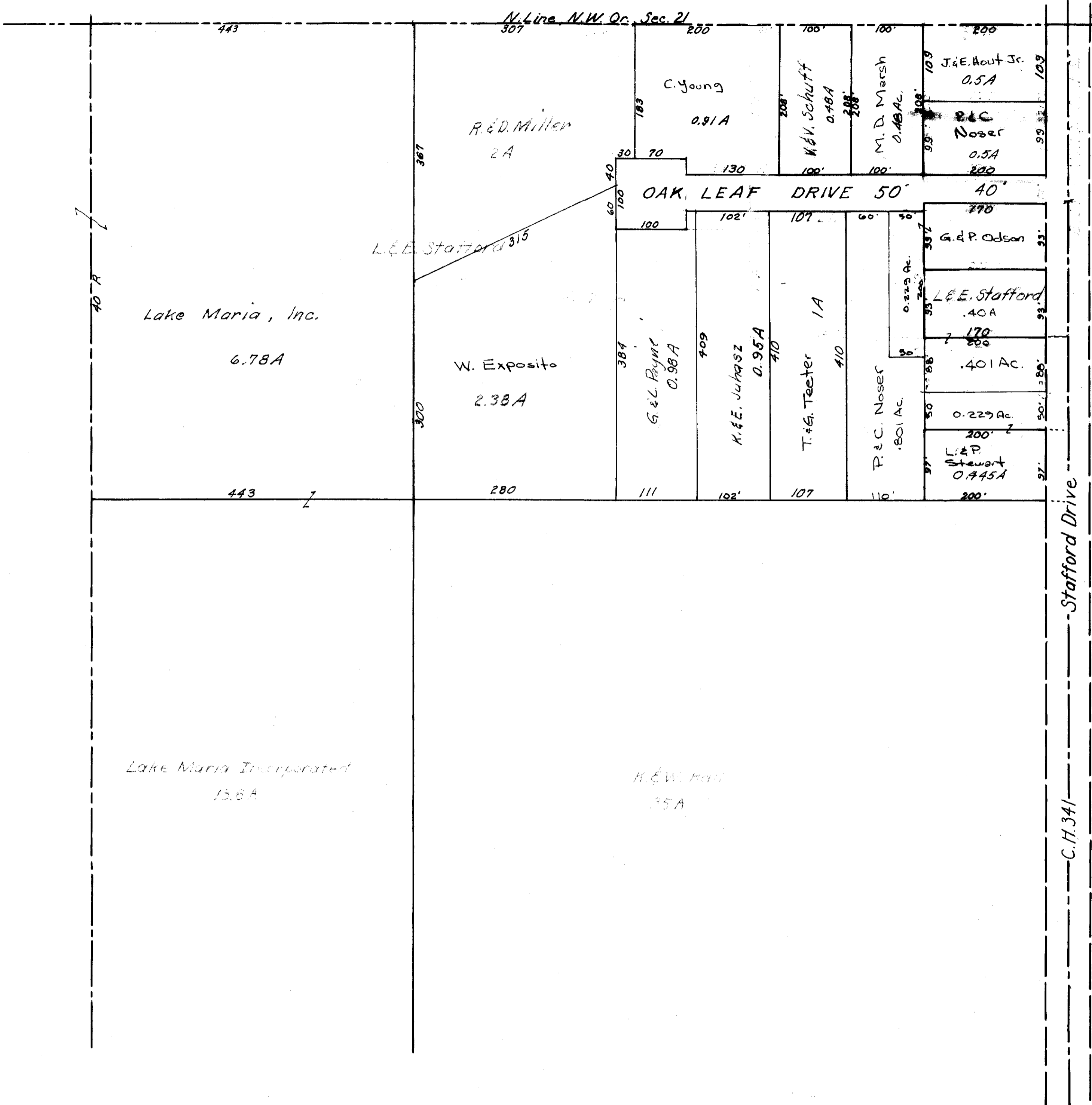


N. Line, N.W. Qr., Sect. 21



Lake Maria, Inc.

6.78 A

W. Exposito

2.38 A

Lake Maria Incorporated

13.6 A

K.E.W. Hall

3.5 A

R.E.D. Miller

2 A

C. Young

0.91 A

W.E.V. Schuff

0.48 A

M.D. Marsh

0.48 AC.

J.&E. Hout Jr.

0.5 A

P.C. Noser

0.5 A

L.E. Stafford 315

G.&L. Ryne

0.98 A

K.E. Jurasz

0.95 A

T.&G. Teeter

1 A

P.&C. Noser

.801 AC.

L.E. Stafford

.40 A

G.&P. Odson

.401 AC.

L.&P. Stewart

0.445 A

OAK LEAF DRIVE 50'

Stafford Drive

C.H. 341

Dedication Plat
Vol. 21, P-103

NE. Pt., NW. Qr., Sect. 21, Washington Township

T-20, R-18