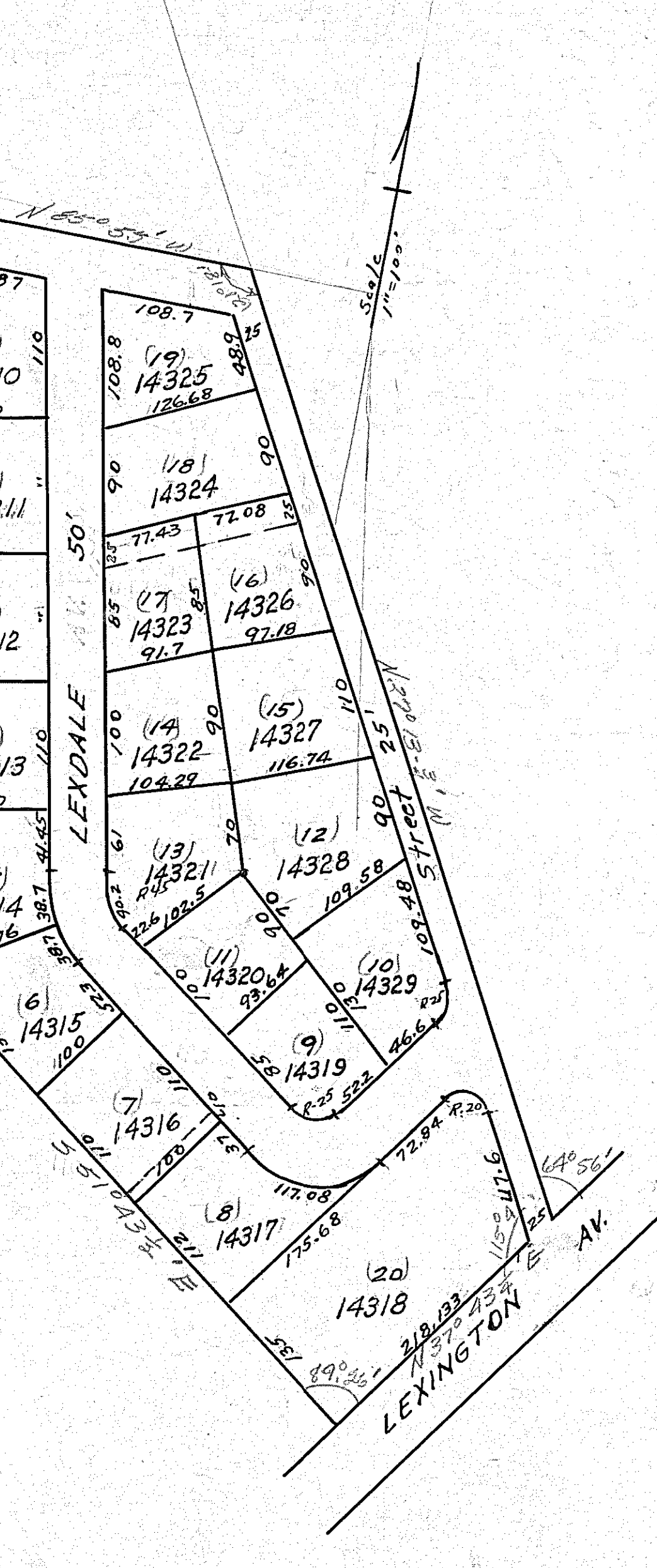




IN CITY

SOUTHVIEW

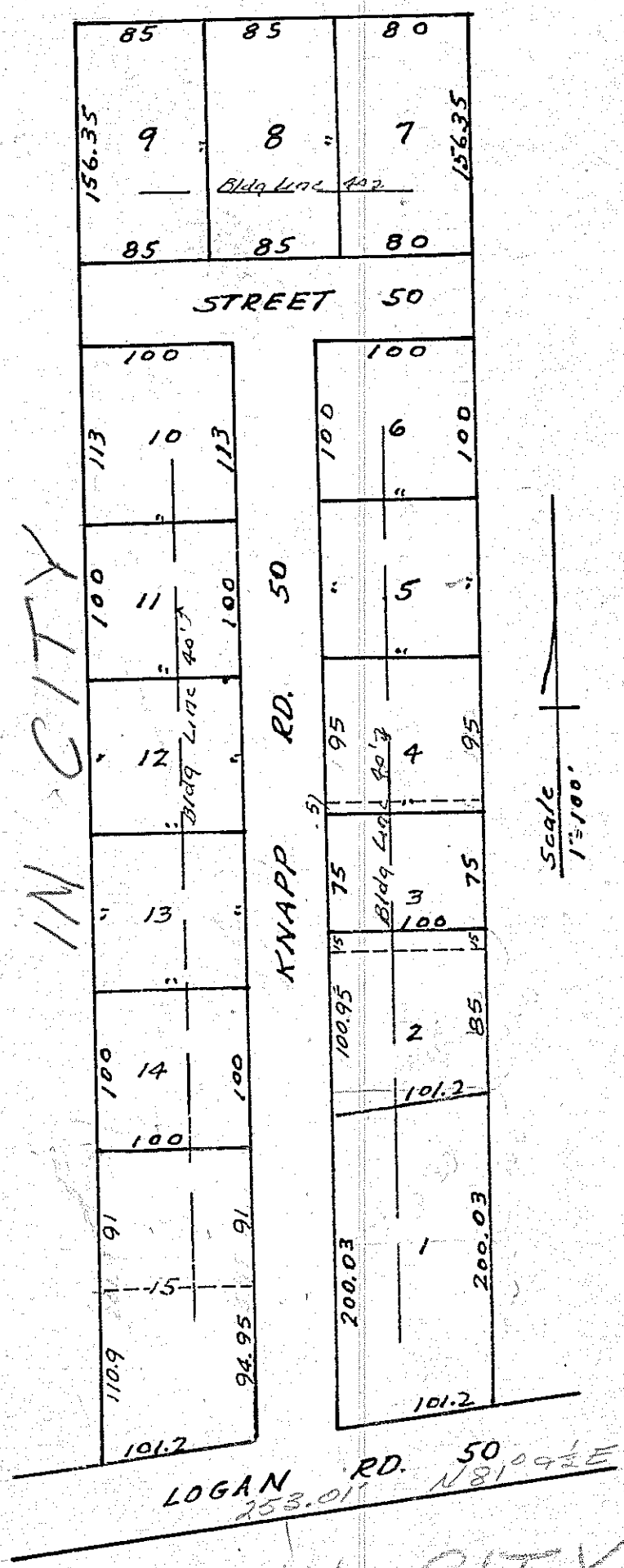
Pt. N.E. 1/4, Sec. 5, Washington Twp.
For details see Vol. 18, P. 114 Recorders Plats



IN CITY

LEXDALE ALLOTMENT IN CITY

Pt. N.W. 1/4, Sec. 5, Washington Twp.
For details see Vol. 17, Page 10 Recorders Plats.



IN CITY

KNAPP-MAPLEDALE

Pt. N.E. 1/4, Sec. 5, Washington Twp.
For details see Vol. 18, P. 9 Recorders Plats