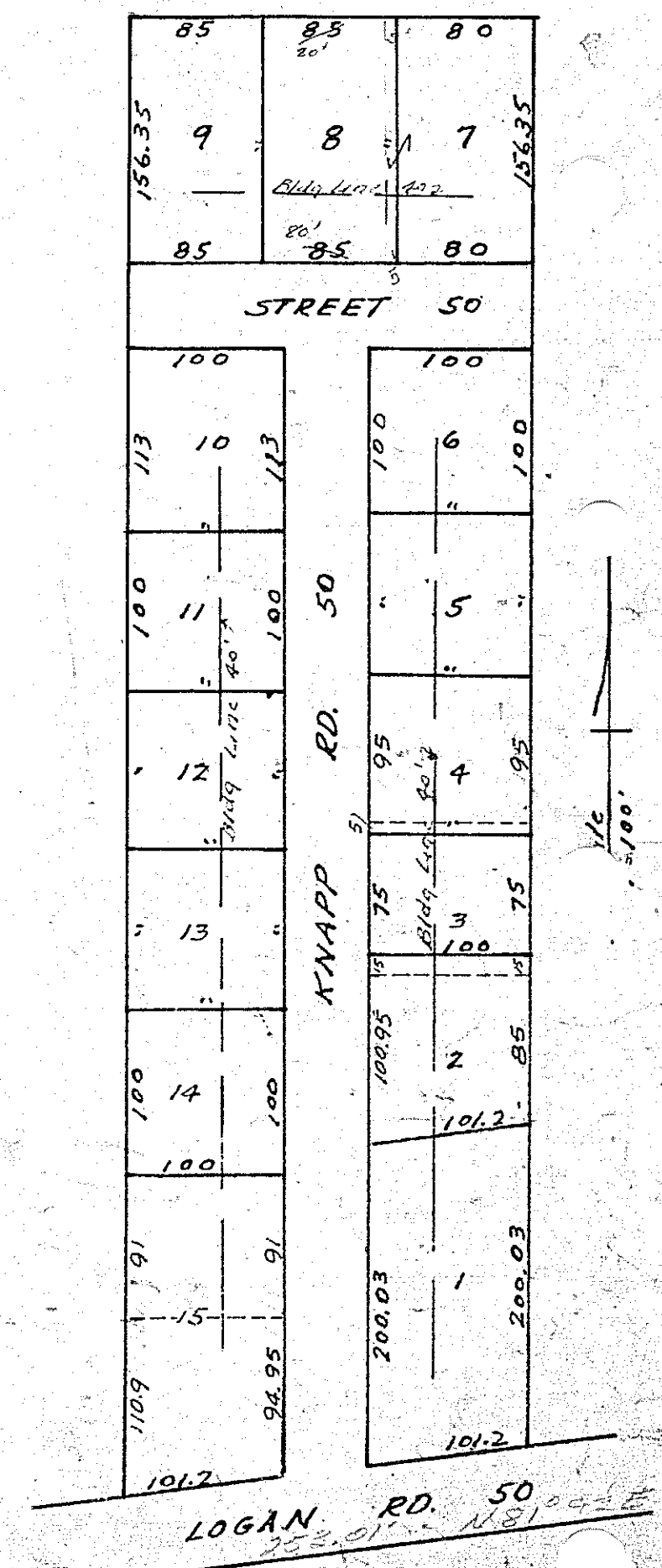




City of
MANSFIELD
7th WARD



ANNEXED 12/4/67

SOUTHVIEW

Pt. N.E. 1/4, Sec. 5, Washington Twp.
For details see Vol. 18, P. 44 Recorders Plats

LEXDALE ALLOTMENT IN CITY

Pt. N.W. 1/4, Sec. 5, Washington Twp.
For details see Vol. 17, Page 10 Recorders Plats

ANNEXED 12/4/67

KNAPP-MAPLEDALE
Pt. N.E. 1/4, Sec. 5, Washington Twp.
For details see Vol. 18, P. 9 Recorders