

5071MPC0303

City of Mansfield

Stone, M.

N. 88° 30' E.

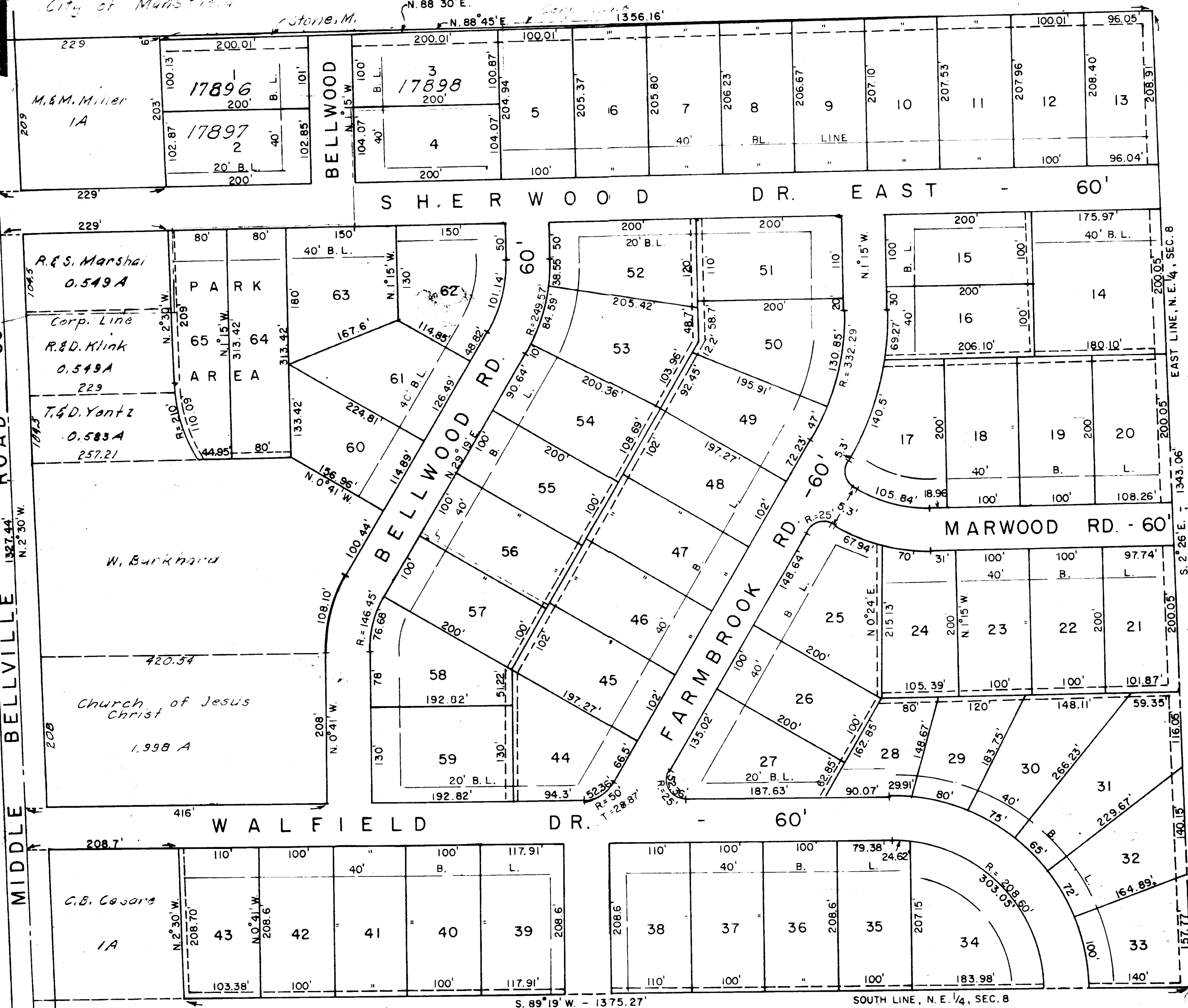
N. 88° 45' E.

1356.16'

C. H. 310

BELLVILLE ROAD - 60'

MIDDLE BELLVILLE ROAD



S. 89° 19' W. - 1375.27'

SOUTH LINE, N. E. 1/4, SEC. 8

EAST LINE, N. E. 1/4, SEC. 8

1" = 100'

VOL. 20, PAGE 35
RECORDERS PLATS

BELLWOOD TERRACE NO. 2
PT. OF N. E. 1/4, SEC. 8
WASHINGTON TWP. ALLOTS

74