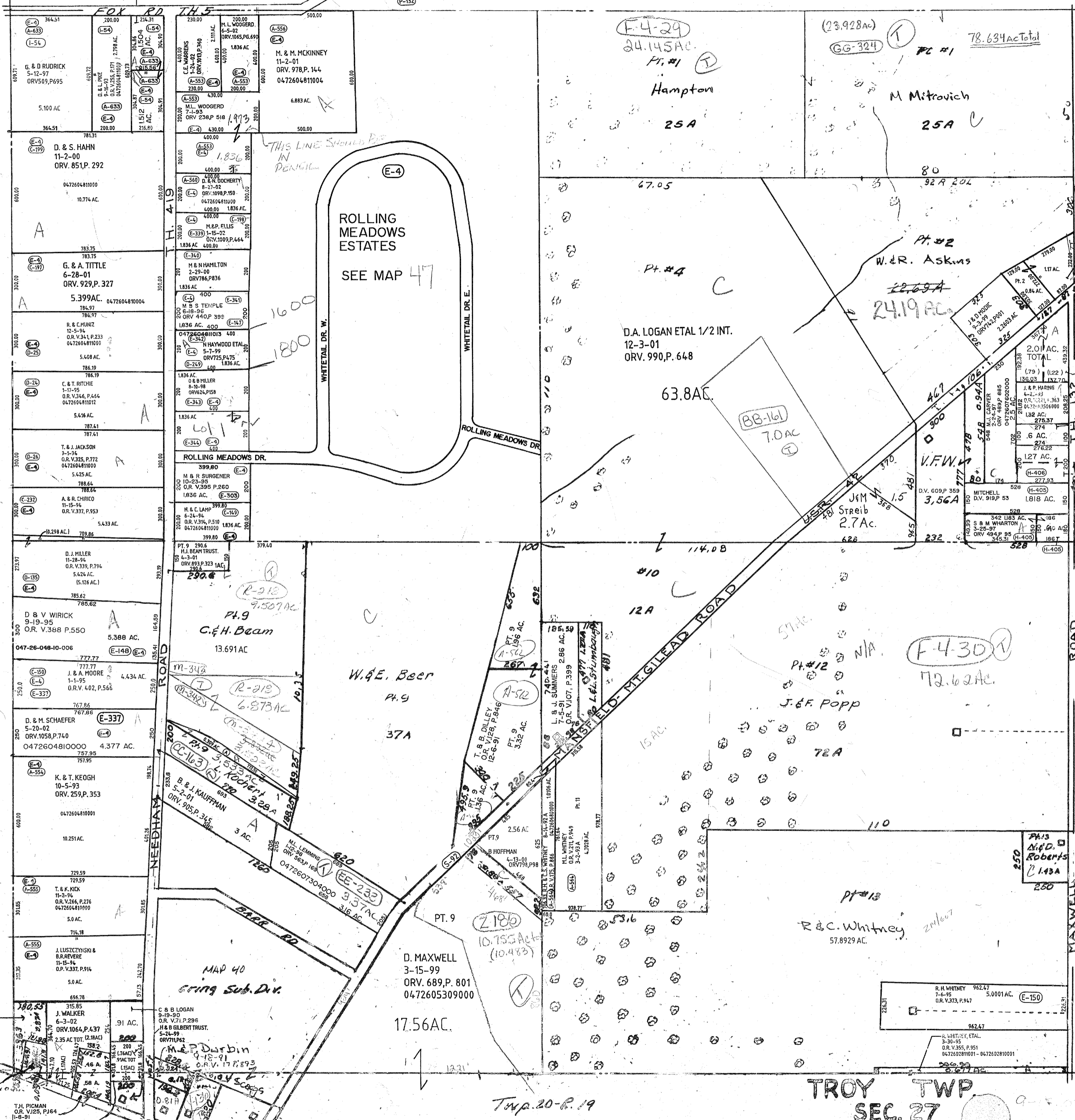


J & C LINTON
6-2-99
ORV714,P128

A L.J. KOCHERT
5-10-02
ORV.1055,P.652
P-132



TROY TWP
SEC. 27

Twp. 20-R. 19

K. TRACY
4-10-02
ORV.1043,P.75

T.H. PICMAN
O.R. V125, P164
11-8-91

M.P. Durbin
O.R.V. 177,893

B. & J. KAUFFMAN
O.R.V. 905, P. 345

M.L. LEMMING
O.R.V. 563P, 169

B. HOFFMAN
O.R.V. 798, P. 98

D. MAXWELL
3-15-99
ORV. 689, P. 801
0472605309000

17.56 AC.

10.75 AC (10.483)

2.56 AC

2.86 AC

3.32 AC

3.32 AC

3.32 AC

3.32 AC

3.32 AC

3.32 AC

3.32 AC

3.32 AC

BL. SMITH
12-20-89
O.R. V.336,P.563

J. LUSZCZYNSKI & B.R. REVERE
11-15-94
O.R.V.337,P.914

J. WALKER
6-3-02
ORV.1064,P.437

C. & B. LOGAN
9-19-90
O.R.V.71,P.296

H. & B. GILBERT TRUST
5-2-99
ORV.711,P.62

M.L. LEMMING
O.R.V. 563P, 169

B. HOFFMAN
O.R.V. 798, P. 98

D. MAXWELL
3-15-99
ORV. 689, P. 801
0472605309000

10.75 AC (10.483)

2.56 AC

2.86 AC

3.32 AC

3.32 AC

3.32 AC

3.32 AC

3.32 AC

3.32 AC

3.32 AC

3.32 AC

3.32 AC

BL. SMITH
12-20-89
O.R. V.336,P.563

J. LUSZCZYNSKI & B.R. REVERE
11-15-94
O.R.V.337,P.914

J. WALKER
6-3-02
ORV.1064,P.437

C. & B. LOGAN
9-19-90
O.R.V.71,P.296

H. & B. GILBERT TRUST
5-2-99
ORV.711,P.62

M.L. LEMMING
O.R.V. 563P, 169

B. HOFFMAN
O.R.V. 798, P. 98

D. MAXWELL
3-15-99
ORV. 689, P. 801
0472605309000

10.75 AC (10.483)

2.56 AC

2.86 AC

3.32 AC

3.32 AC

3.32 AC

3.32 AC

3.32 AC

3.32 AC

3.32 AC

3.32 AC

3.32 AC